

Bronze Sponsor



# Optimizing IT Efficiency: Integrating Turbonomic with Apptio and Cloudability

**Your Guides:**  
Daniel Cunningham and Tim Pietro

# Part I: Introduction



# Agenda

---

- Introduction
- Configuration Basics
- Security Basics
- Installing Jaspersoft Studio
- Interface Introduction
- Data Adapter Setup
- Server Connection Setup

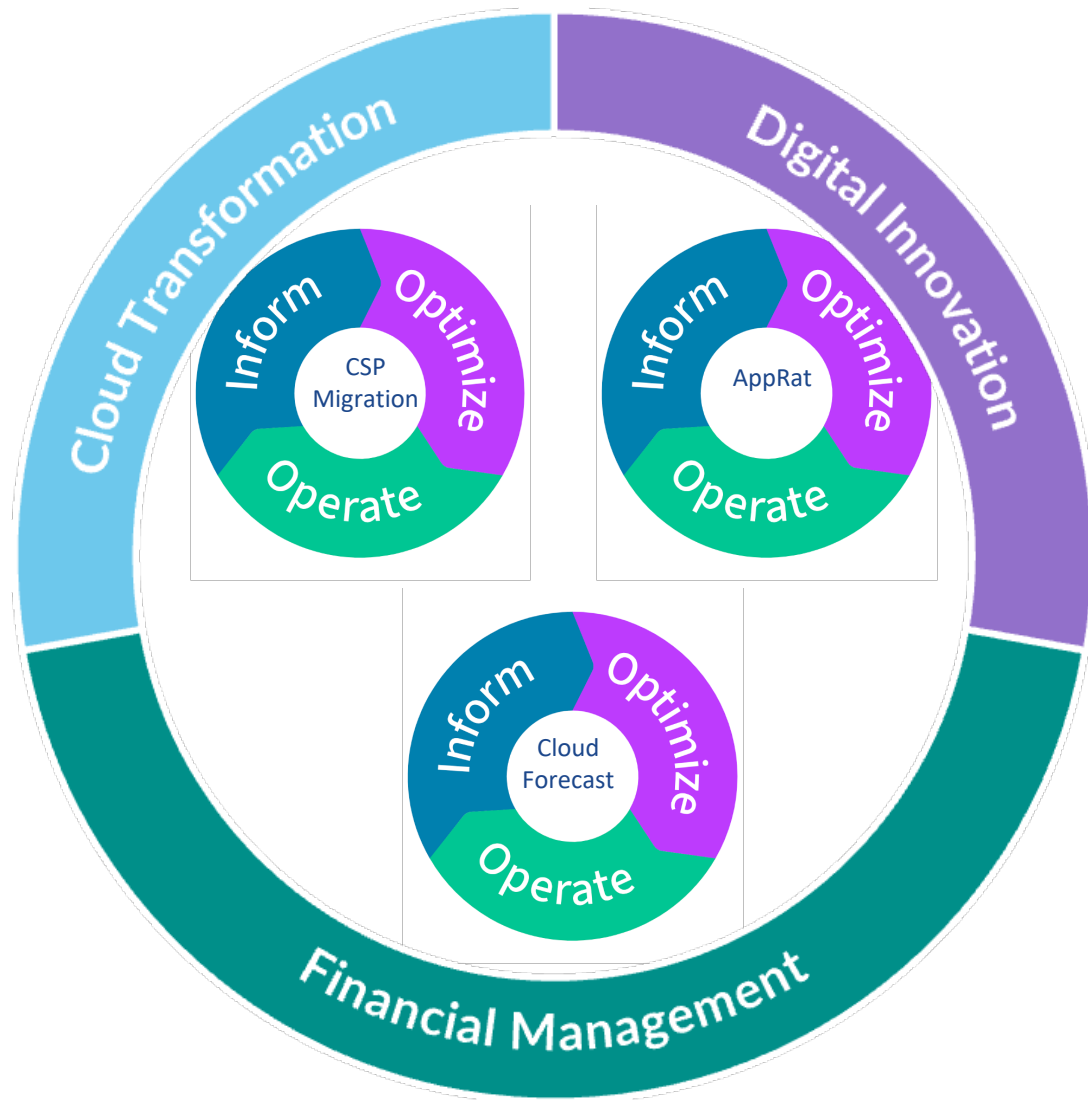
# Introductions

---

- Take 5 Minutes
- Turn to a Person Near You
- Introduce Yourself
- Business Cards

# Part I: FinOps Overview

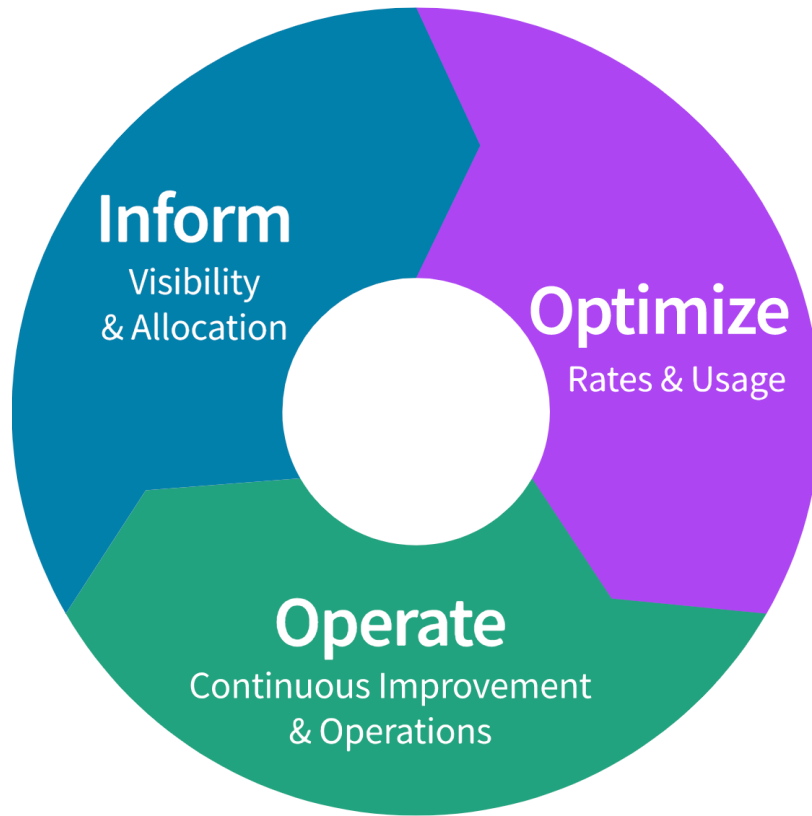
# FinOps + TBM Together



- FinOps guides operational heart of Cloud Practices in support of TBM goals
- Each phase of TBM can engage the FinOps Cycle independently
  - Inform -> Assure Data Quality
  - Optimize -> Understand Utilization and Opportunities for Refinement
  - Operate -> Align People to enact the adjustments

# FinOps: Financial Governance for Cloud

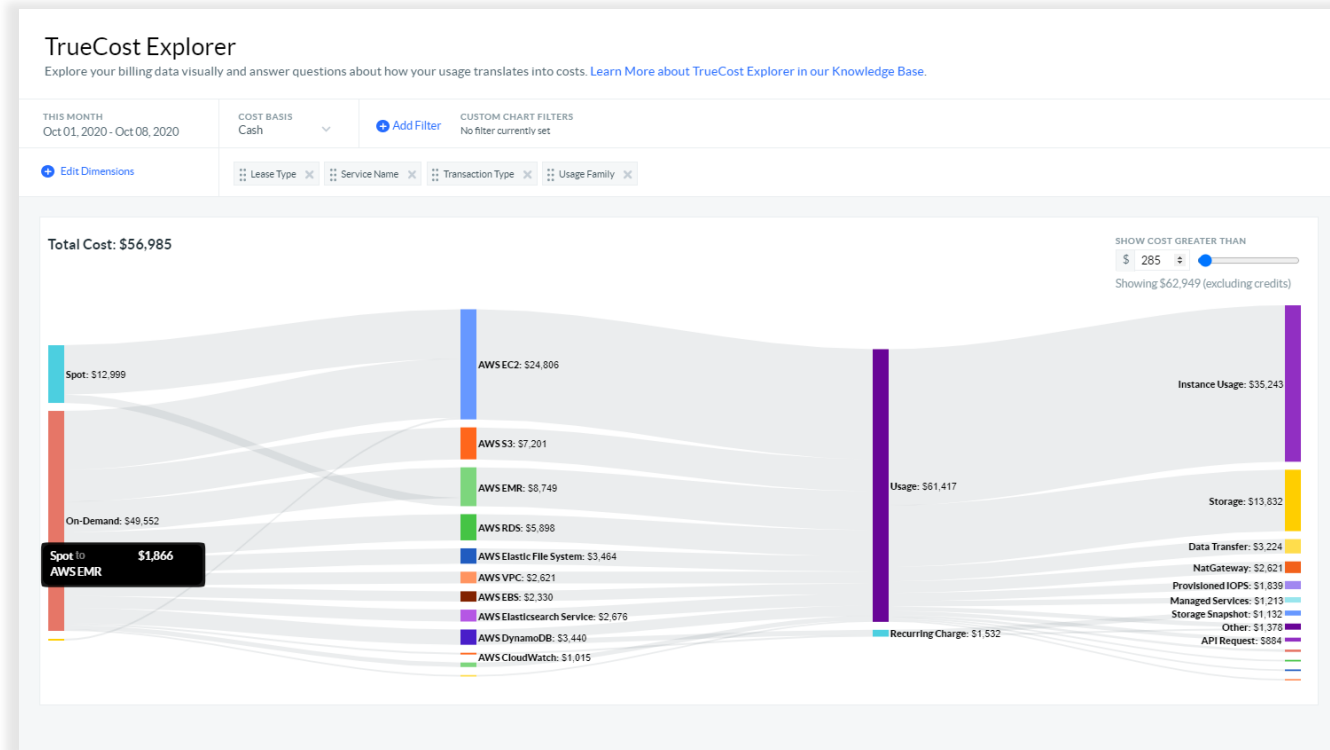
7



**The 3 phases of the FinOps lifecycle**

Courtesy: FinOps Foundation

- A set of principals, processes and tools
- That enable collaboration between IT, Finance and The Business
- To maximize the business value of an organization's cloud deployment



*\*Figures for example only*

Establish cost allocation strategy

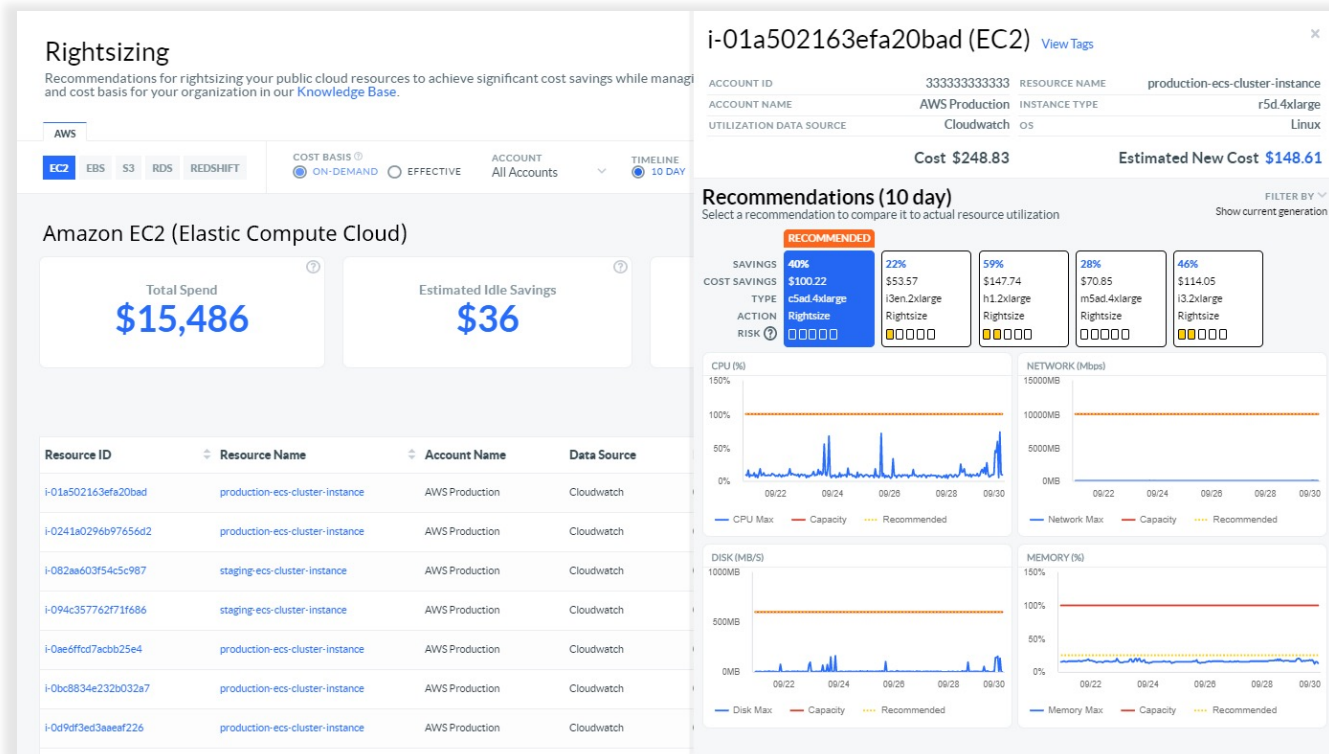
Integrate custom pricing and discounting

Perform showback/chargeback for BUs

Curate dashboards and personalize views



# Optimize



*\*Figures for example only*

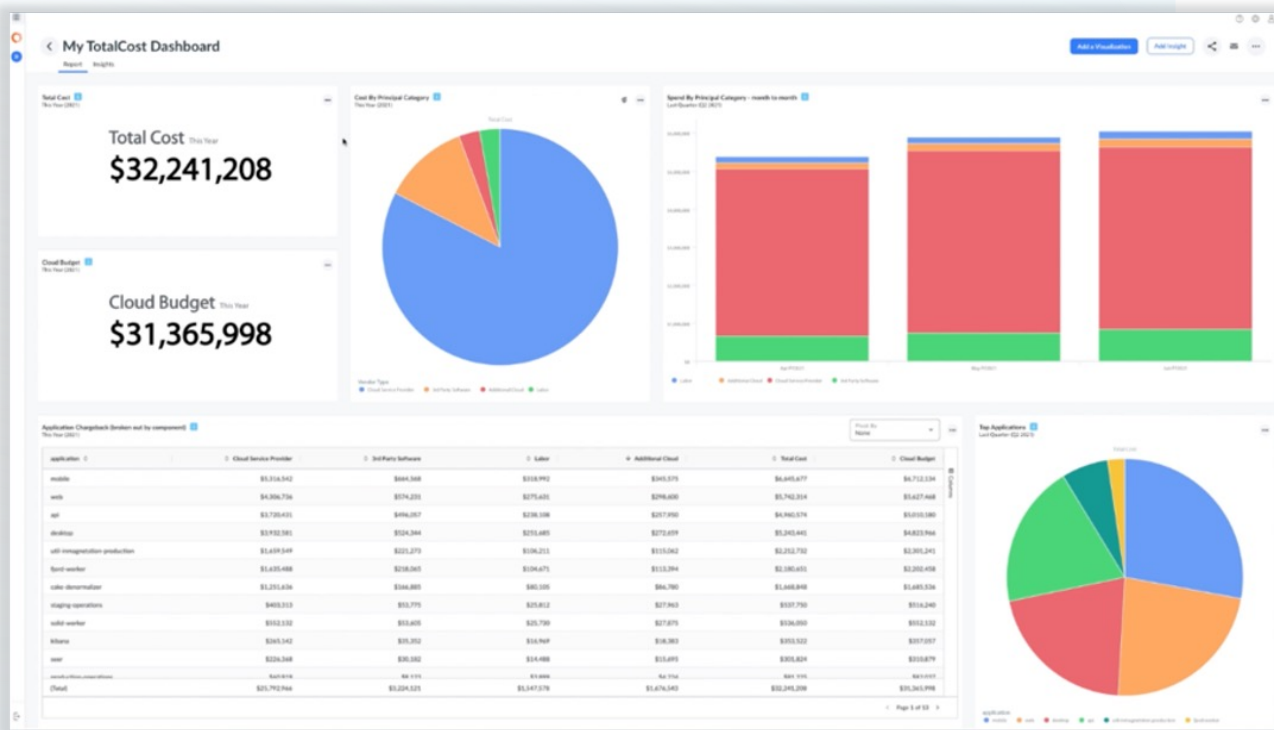
Identify idle resources and eliminate waste

Rightsize VMs, databases, storage and more

Centralize commitment buying process

Detect and address spend anomalies

# Operate



*\*Figures for example only*

Automate workflows for cost optimization  
Track to budgets and forecasts  
Enable engineers to take action  
Communicate progress regularly

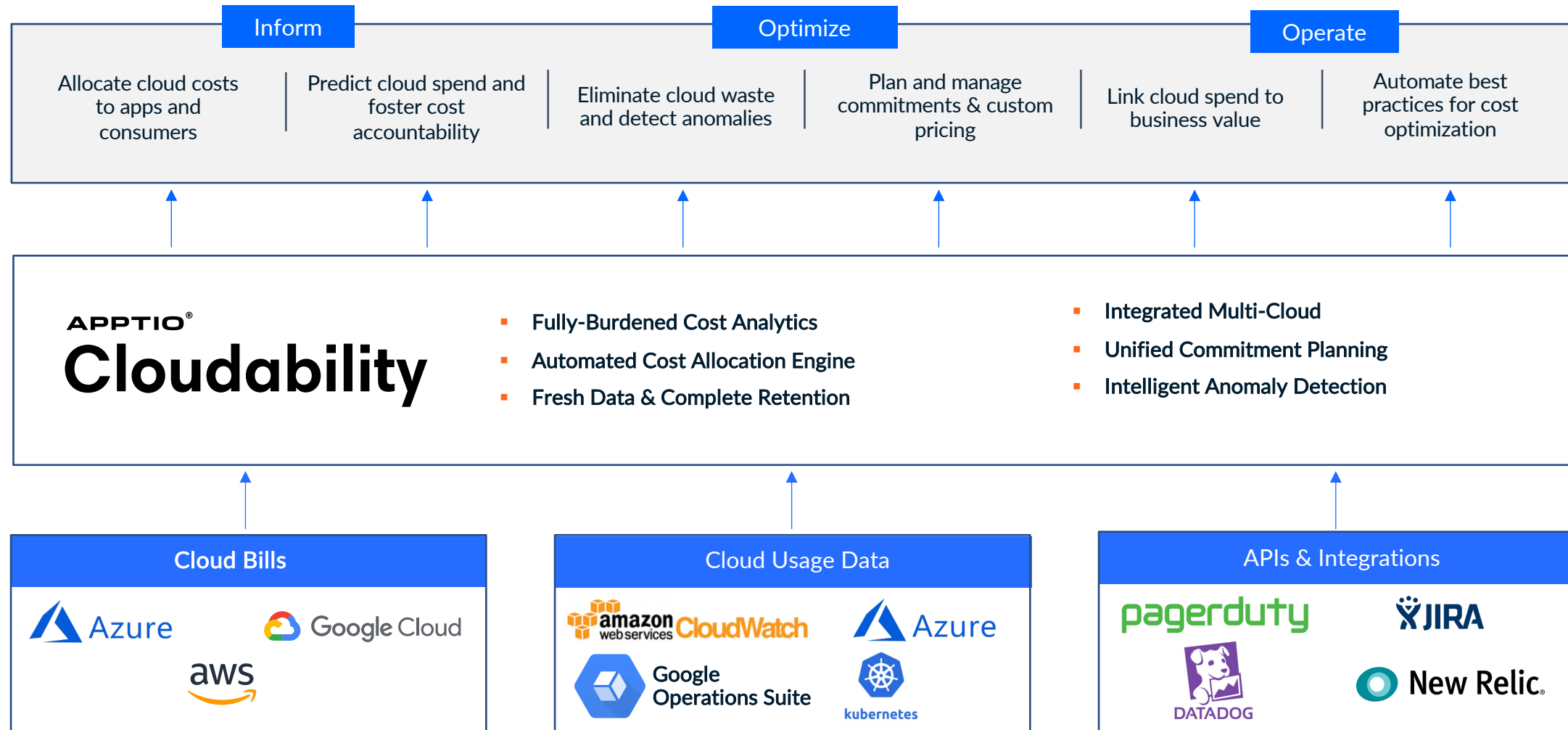
# Discussion Points

- Where does ownership of cost reduction sit in your org today?
- What is your organization's strategy today for stabilizing cost today? If through purchasing, what vehicle do you use (RIs, SPs, other)?
- How is cost stabilization communicated?

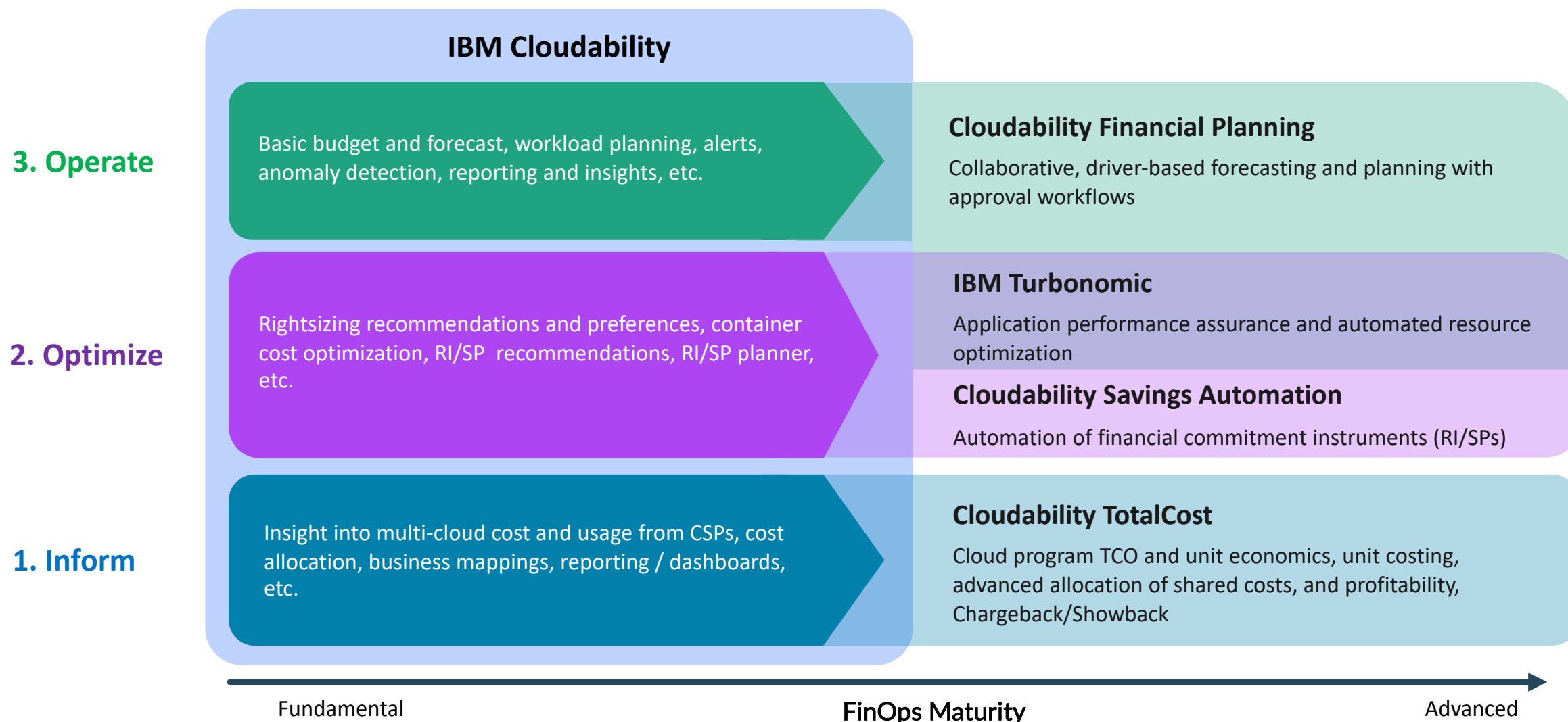
# Part II: Cloudability + FinOps



# Cloudability and FinOps: Operating Model



# FinOps for all phases & maturity levels





Surpass your FinOps goals with the combination of

# Cloudability and Turbonomic

IBM Apptio Cloudability

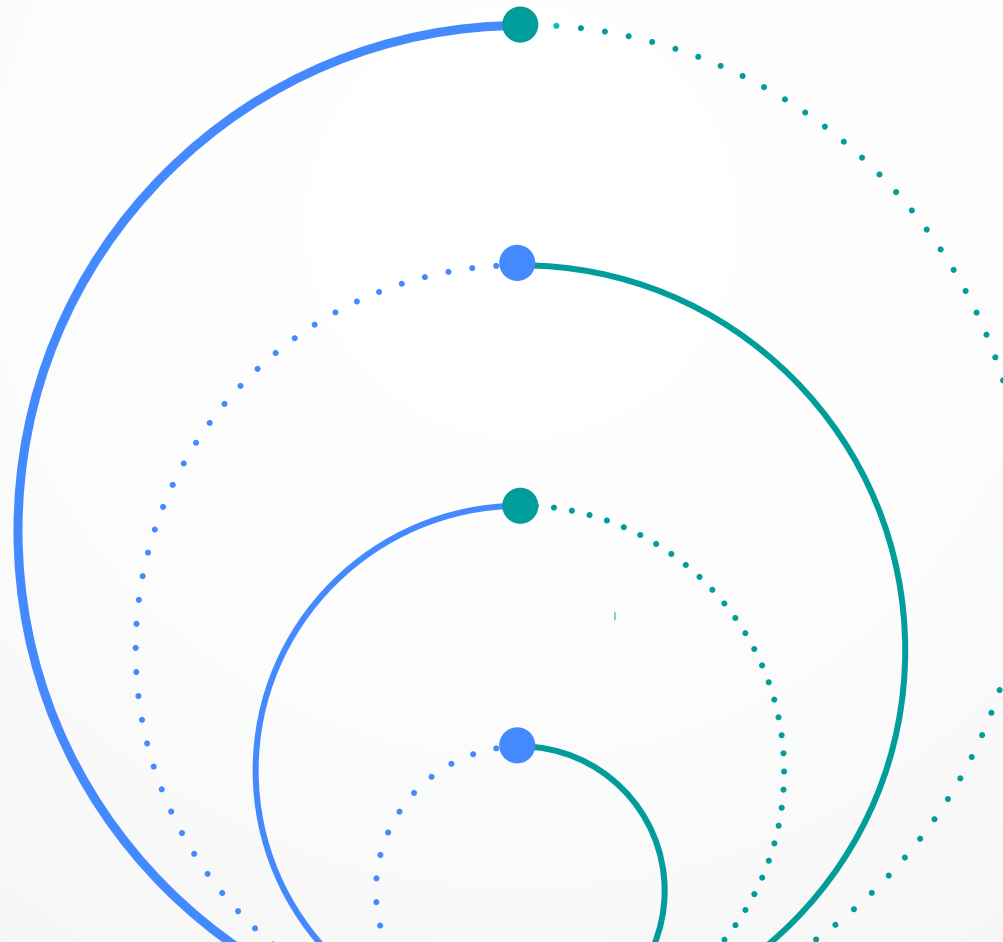
*Maximize cloud value*

Cloud cost management and optimization for all FinOps phases to tie spend to business value delivered

IBM Turbonomic

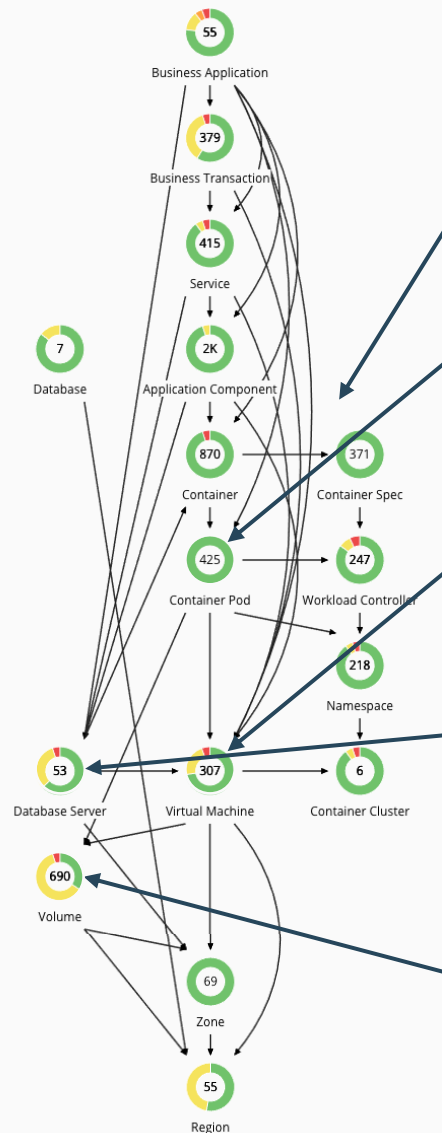
*Protect the business*

Automated elasticity at scale for all multi-cloud and cloud native operations to protect performance and control spend





# Automate actions at every layer of the stack to drive elasticity.



<input type="checkbox"/>	Workload Controller Name	Cluster	Namespace	Risk	Action Category	Action
<input type="checkbox"/>	cpu-up	Kubernetes-se-lab-aks	default	VMem Limit Congestion, VCPU Throttling Congestion i...	PERFORMANCE	DETAILS
<input type="checkbox"/>	csi-azurefile-node	Kubernetes-se-lab-aks	kube-system	VCPU Throttling Congestion in Container Spec node-dri...	PERFORMANCE	DETAILS

<input type="checkbox"/>	Container Pod Name	Cluster	Namespace	From	To	Risk	Action Category	Action
<input type="checkbox"/>	openshift-monitoring/prometheus-k	Kubernetes-OCP48-DC11	openshift-monitoring	ocp-release-jlw72-worker-p2k	ocp-release-jlw72-worker-25x	VMem Congestion	PERFORMANCE	DETAILS
<input type="checkbox"/>	default/cpu-move-5479d	Kubernetes-se-lab-gke	default	gke-turbo-se-lab-default-pool-	gke-turbo-se-lab-default-pool-	VCPU Congestion	PERFORMANCE	DETAILS

<input type="checkbox"/>	Virtual Machine Name	Account	Instance Type	RI Coverage	On-Demand Cost	New Instance Type	New RI Coverage	New On-Demand Cost	Action Category	Cost Impact ↓	Action
<input type="checkbox"/>	PT_Resize_Down_T	Quality Engineering	m5a.2xlarge	0%	\$0.372/h	c5a.xlarge	50%	\$0.081/h	SAVINGS	↓ \$212.44/mo	DETAILS
<input type="checkbox"/>	ptaub807disabled	EA - Development	Standard_E4s_v3	100%	\$0.178/h	Standard_B2s	0%	\$0.048/h	SAVINGS	↓ \$95.17/mo	DETAILS
<input type="checkbox"/>	ptaub807enabled	EA - Development	Standard_E4s_v3	50%	\$0.129/h	Standard_E2s_v3	100%	\$0.00/h	SAVINGS	↓ \$94.18/mo	DETAILS

<input type="checkbox"/>	Database Server Name	Account	Non-Disruptive	Reversible	Instance Type	On-Demand Cost	New Instance Type	New On-Demand Cost	Action Category	Cost Impact ↓	Action
<input type="checkbox"/>	database-2-instanc	Development	×	✓	db.r3.2xlarge-aur...	\$1.16/h	db.t3.medium-aur...	\$0.082/h	SAVINGS	↓ \$786.94/mo	DETAILS
<input type="checkbox"/>	paas-lowcache-mai	Development	×	✓	db.t3.medium-gp2	\$0.095/h	db.t2.medium-sta...	\$0.091/h	PERFORMANCE	↓ \$2.55/mo	DETAILS

<input type="checkbox"/>	Name	Account	Non-Disruptive	Reversible	Attached VM	Tier	Disk Size	IOPS	Cost	New Tier	New Disk Size	New IOPS	New Cost	Action Category	Cost Impact ↓	Action
<input type="checkbox"/>	snap_irmel_dotn	EA - Developpr	×	✓	dotnetVMad	Managed Pr...	1 TB	5000	\$148.68/...	Managed S...	1 TB	500	\$40.96/...	SAVINGS	↓ \$107.72/r	DETAILS
<input type="checkbox"/>	77699-richard.st	EA - Developpr	×	✓	77699-richar	Managed Pr...	1 TB	5000	\$135.17/...	Managed S...	1 TB	500	\$40.96/...	SAVINGS	↓ \$94.21/m	DETAILS
<input type="checkbox"/>	77699-richard.st	EA - Developpr	×	✓	77699-richar	Managed Pr...	1 TB	5000	\$135.17/...	Managed S...	1 TB	500	\$40.96/...	SAVINGS	↓ \$94.21/m	DETAILS
<input type="checkbox"/>	vol-Inst3-SDwoM	Product Mana	✓	✓	Inst3-SDwoM	Standard	8 GB	160	\$60.13/...	GP3	8 GB	3000	\$0.64/mo	PERFORMANCE	↓ \$59.49/m	DETAILS
<input type="checkbox"/>	vol-Inst1-SUwoM	Product Mana	✓	✓	Inst1-SUwoM	Standard	8 GB	160	\$56.34/...	GP3	8 GB	3000	\$0.64/mo	PERFORMANCE	↓ \$55.70/m	DETAILS

# Questions?



# Surveys

Please take a few moments to fill out the class survey.  
Your feedback is extremely important for future events.



# Thank You For Attending Rego University

## Instructions for PMI credits

- Access your account at pmi.org
- Click on **Certifications**
- Click on **Maintain My Certification**
- Click on **Visit CCR's** button under the **Report PDU's**
- Click on **Report PDU's**
- Click on **Course or Training**
- Class Provider = **Rego Consulting**
- Class Name = **regoUniversity**
- Course **Description**
- Date Started = **Today's Date**
- Date Completed = **Today's Date**
- Hours Completed = **1 PDU per hour of class time**
- Training classes = **Technical**
- Click on **I agree** and **Submit**



Let us know how we can improve!  
Don't forget to fill out the class survey.



### Phone

888.813.0444



### Email

[info@regoconsulting.com](mailto:info@regoconsulting.com)



### Website

[www.regouniversity.com](http://www.regouniversity.com)





# rego consulting

Let Rego Be Your Guide

