



Sponsored by  
**ValueOps™**  
by Broadcom

**Clarity™**  
by Broadcom

**Rally®**  
by Broadcom

**ConnectALL**  
by Broadcom

**Insights**  
by Broadcom

# Boost Your Resource Management with its Advanced Resource Planning

Your Guides:  
Nora Bok and David Chiumento



# Your Contact Persons



**Nora Bok**

Account Management

✉ [nora.bok@itdesign.de](mailto:nora.bok@itdesign.de)

☎ +49 151 73052828



**David Chiumento**

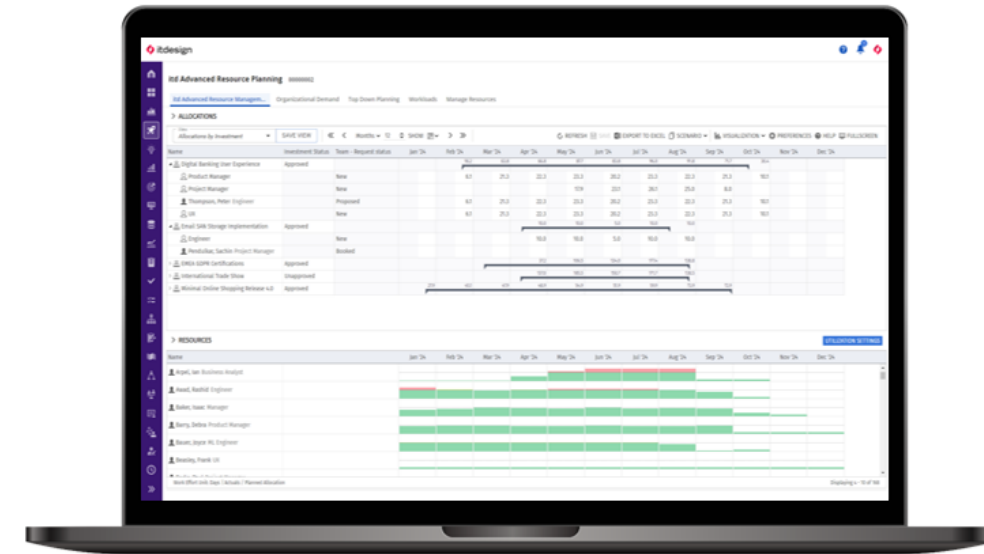
Head of Operations

✉ [david.chiumento@itdesign.de](mailto:david.chiumento@itdesign.de)

☎ +49 151 12845026



# Things that make us happy...



# 1

## The Challenges

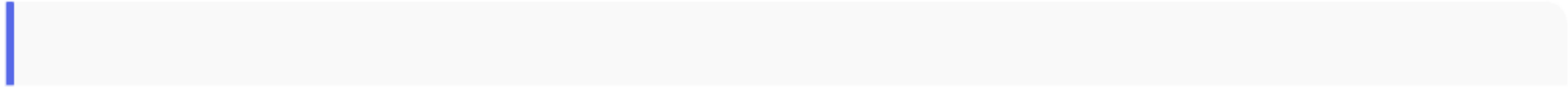
# The Challenges...



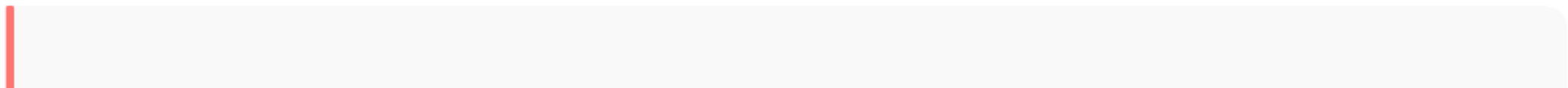
- Resource bottlenecks and overload
- Slow decision-making processes
- Lack of transparency and forecasts

# What are you currently using for your Resource Management?

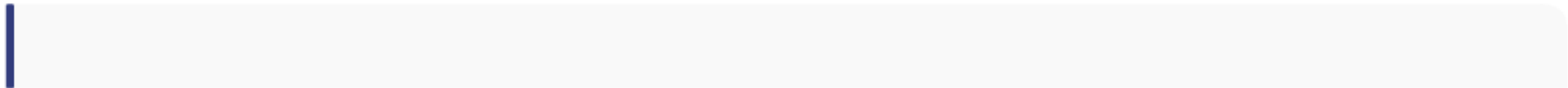
Staffing Module



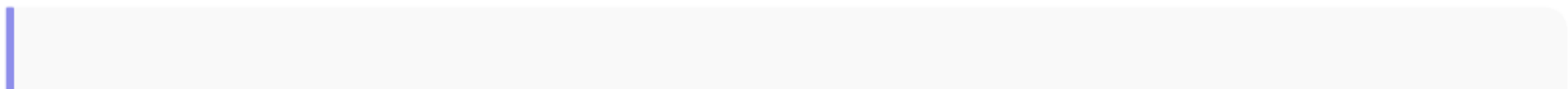
Staff Tab



itd Advanced Resource Planning



Other RM tools



# What are you most curious about in today's session?

Scenario Planning



Strategic Portfolio Planning



Resolving Bottlenecks



Role-Based Capacity Management



Assignment Optimization



# Why Advanced Resource Planning?

Clarity handles basic resource planning well.



itd Advanced Resource Planning

adds **extra functionality and features** for professional resource planning!





# Add-on for Professional Resource Planning in Clarity

## itd Advanced Resource Planning: Features & Benefits

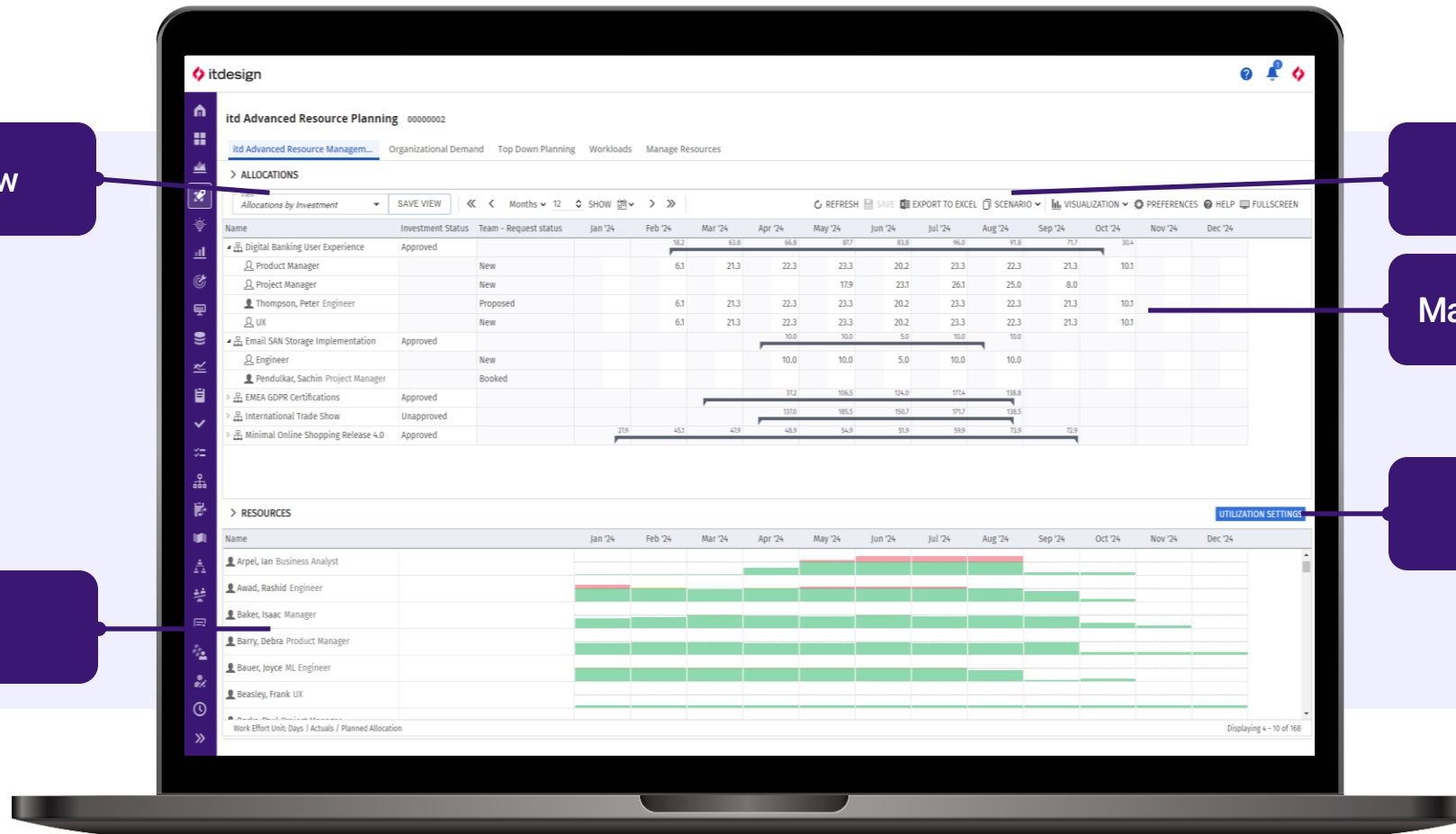
Customized View

Drag and Drop

Scenario Planning

Maximum Transparency

Extensive Filtering Options



# 2

---

All Information at a Glance

itd Advanced Resource Planning 00000002

itd Advanced Resource Managem...

Organizational Demand

Top Down Planning

Workloads

Manage Resources

> ALLOCATIONS

View

Danas View

SAVE VIEW

<< < Months 15 SHOW > >>

REFRESH

SAVE CHANGES (CTRL+S)

EXPORT TO EXCEL

SCENARIO

VISUALIZATION

PREFERENCES

HELP

FULL SCREEN

| Name                         | Ranking | Investment Type | Sep '25 | Oct '25 | Nov '25 | Dec '25 | Jan '26 | Feb '26 | Mar '26 | Apr '26 | May '26 | Jun '26 | Jul '26 | Aug '26 | Sep '26 | Oct '26 | Nov '26 |
|------------------------------|---------|-----------------|---------|---------|---------|---------|---------|---------|---------|---------|---------|---------|---------|---------|---------|---------|---------|
| ▶  Absence                   | 1       | Other Work      | 22      | 23      | 20      | 23      | 22      | 25      | 27      | 27      | 26      | 33      | 29      | 27      |         |         |         |
| ▶  AI-Powered Transformation | 2       | Project         | 125     | 129     | 149     | 202     | 189     | 163     | 188     | 143     | 19      | 19      | 15      |         |         |         |         |
| ▶  CRM Upgrade               | 3       | Project         |         | 40      | 40      | 40      | 40      | 38      |         |         |         |         |         |         |         |         |         |
| ▶  Omnichannel Integration   | 4       | Project         |         |         |         | 34      | 51      | 51      | 56      | 56      | 56      | 56      | 60      | 45      | 38      |         |         |
| ▶  BI Reporting Tool         | 5       | Project         | 15      | 15      | 15      | 15      | 15      | 15      | 20      | 23      | 33      | 33      | 49      | 49      | 49      | 69      | 82      |

> RESOURCES

SHOW UTILIZATION FILTER

UTILIZATION SETTINGS

| Name                           | Skills                             | Sep '25 | Oct '25 | Nov '25 | Dec '25 | Jan '26 | Feb '26 | Mar '26 | Apr '26 | May '26 | Jun '26 | Jul '26 | Aug '26 | Sep '26 | Oct '26 | Nov '26 |
|--------------------------------|------------------------------------|---------|---------|---------|---------|---------|---------|---------|---------|---------|---------|---------|---------|---------|---------|---------|
| Arpel, Ian Business Analyst    | Architectural Analytics, Busin...  |         |         |         |         |         |         |         |         |         |         |         |         |         |         |         |
| Berks, Paul Project Manager    | Acoustics, Failure Analysis, Ne... |         |         |         |         |         |         |         |         |         |         |         |         |         |         |         |
| Bernard, Luc Project Manager   | Earned Value Analysis, Project...  |         |         |         |         |         |         |         |         |         |         |         |         |         |         |         |
| Childers, Valerie Architect    | Failure Analysis, Network Man...   |         |         |         |         |         |         |         |         |         |         |         |         |         |         |         |
| Coleman, Joyce Architect       | Development, Research & Dev...     |         |         |         |         |         |         |         |         |         |         |         |         |         |         |         |
| Dixon, Danielle Architect      | Architectural Analytics, Busin...  |         |         |         |         |         |         |         |         |         |         |         |         |         |         |         |
| Granger, Paula Project Manager | Architectural Analytics, Busin...  |         |         |         |         |         |         |         |         |         |         |         |         |         |         |         |
| Grant, Lily Project Manager    | Earned Value Analysis, Project...  |         |         |         |         |         |         |         |         |         |         |         |         |         |         |         |
| Hayes, Justin Architect        | Earned Value Analysis, Project...  |         |         |         |         |         |         |         |         |         |         |         |         |         |         |         |

# 3

---

Find the Perfect Fit for Your Projects



## itd Advanced Resource Planning 00000002

[itd Advanced Resource Managem...](#)
[Organizational Demand](#)
[Top Down Planning](#)
[Workloads](#)
[Manage Resources](#)

## &gt; ALLOCATIONS

View

Danas Top Projects

<<

<

Months

15

SHOW

>

>>

REFRESH

SAVE CHANGES

EXPORT TO EXCEL

SCENARIO

VISUALIZATION

PREFERENCES

HELP

FULLSCREEN

| Name   | Ranking | Investment Type | Sep '25 | Oct '25 | Nov '25 | Dec '25 | Jan '26 | Feb '26 | Mar '26 | Apr '26 | May '26 | Jun '26 | Jul '26 | Aug '26 | Sep '26 | Oct '26 | Nov '26 |
|--|---------|-----------------|---------|---------|---------|---------|---------|---------|---------|---------|---------|---------|---------|---------|---------|---------|---------|
| <div><div></div><div>Absence</div></div>                   | 1       | Other Work      | 22      | 23      | 20      | 23      | 22      | 25      | 27      | 27      | 26      | 33      | 29      | 27      |         |         |         |
| <div><div></div><div>AI-Powered Transformation</div></div> | 2       | Project         | 129     | 130     | 140     | 206     | 166     | 147     | 164     | 126     | 10      | 10      | 10      |         |         |         |         |
| <div><div></div><div>CRM Upgrade</div></div>               | 3       | Project         |         | 54      | 54      | 55      | 53      | 54      |         |         |         |         |         |         |         |         |         |
| <div><div></div><div>Omni-channel Integration</div></div>  | 4       | Project         | 22      | 48      | 51      | 59      | 56      | 51      | 53      | 57      | 43      | 37      | 14      |         |         |         |         |
| <div><div></div><div>BI Reporting Tool</div></div>         | 5       | Project         | 15      | 15      | 15      | 15      | 15      | 11      | 8       | 8       | 23      | 23      | 33      | 33      | 33      | 53      | 82      |

## &gt; RESOURCES

[SHOW UTILIZATION FILTER](#)
[UTILIZATION SETTINGS](#)

| Name                             | Skills                             | Sep '25 | Oct '25 | Nov '25 | Dec '25 | Jan '26 | Feb '26 | Mar '26 | Apr '26 | May '26 | Jun '26 | Jul '26 | Aug '26 | Sep '26 | Oct '26 | Nov '26 |
|----------------------------------|------------------------------------|---------|---------|---------|---------|---------|---------|---------|---------|---------|---------|---------|---------|---------|---------|---------|
| Arpel, Ian - Business Analyst    | Architectural Analytics, Busin...  |         |         |         |         |         |         |         |         |         |         |         |         |         |         |         |
| Berks, Paul - Project Manager    | Acoustics, Failure Analysis, Ne... |         |         |         |         |         |         |         |         |         |         |         |         |         |         |         |
| Bernard, Luc - Project Manager   | Earned Value Analysis, Project...  |         |         |         |         |         |         |         |         |         |         |         |         |         |         |         |
| Chen, Valerie - Architect        | Failure Analysis, Network Man...   |         |         |         |         |         |         |         |         |         |         |         |         |         |         |         |
| Coleman, Joyce - Architect       | Development, Research & Dev...     |         |         |         |         |         |         |         |         |         |         |         |         |         |         |         |
| Dixon, Danielle - Architect      | Architectural Analytics, Busin...  |         |         |         |         |         |         |         |         |         |         |         |         |         |         |         |
| Granger, Paula - Project Manager | Architectural Analytics, Busin...  |         |         |         |         |         |         |         |         |         |         |         |         |         |         |         |

Displaying 1 - 7 of 31

# 4

---

## Smart Bottleneck Resolution

## itd Advanced Resource Planning 00000002

[itd Advanced Resource Managem...](#) [Organizational Demand](#) [Top Down Planning](#) [Workloads](#) [Manage Resources](#)

## &gt; ALLOCATIONS

| View Danas Top Projects      |         | SAVE VIEW       | ◀ ◂ Months 15 ▶ ▸ |         | SHOW    | REFRESH | SAVE CHANGES (CTRL+S) | EXPORT TO EXCEL | SCENARIO | VISUALIZATION | PREFERENCES | HELP    | Full Screen |         |         |         |         |
|------------------------------|---------|-----------------|-------------------|---------|---------|---------|-----------------------|-----------------|----------|---------------|-------------|---------|-------------|---------|---------|---------|---------|
| Name                         | Ranking | Investment Type | Sep '25           | Oct '25 | Nov '25 | Dec '25 | Jan '26               | Feb '26         | Mar '26  | Apr '26       | May '26     | Jun '26 | Jul '26     | Aug '26 | Sep '26 | Oct '26 | Nov '26 |
| ▶  Absente                   | 1       | Other Work      | 22                | 23      | 20      | 23      | 22                    | 25              | 27       | 27            | 26          | 33      | 29          | 27      |         |         |         |
| ▶  AI-Powered Transformation | 2       | Project         | 129               | 130     | 149     | 206     | 166                   | 147             | 164      | 126           | 10          | 30      | 30          |         |         |         |         |
| ▶  CRM Upgrade               | 3       | Project         |                   |         |         |         |                       | 31              | 39       | 53            | 50          | 56      |             |         |         |         |         |
| ▶  Omnichannel Integration   | 4       | Project         | 31                | 31      | 48      | 56      | 42                    | 37              | 38       | 42            | 36          | 33      | 12          |         |         |         |         |
| ▶  BI Reporting Tool         | 5       | Project         | 15                | 15      | 15      | 15      | 15                    | 11              | 8        | 8             | 23          | 23      | 33          | 33      | 33      | 53      | 82      |

## &gt; RESOURCES

[SHOW UTILIZATION FILTER](#) [UTILIZATION SETTINGS](#)

| Name                             | Skills                             | Sep '25 | Oct '25 | Nov '25 | Dec '25 | Jan '26 | Feb '26 | Mar '26 | Apr '26 | May '26 | Jun '26 | Jul '26 | Aug '26 | Sep '26 | Oct '26 | Nov '26 |
|----------------------------------|------------------------------------|---------|---------|---------|---------|---------|---------|---------|---------|---------|---------|---------|---------|---------|---------|---------|
| Arpel, Ian - Business Analyst    | Architectural Analytics, Busin...  |         |         |         |         |         |         |         |         |         |         |         |         |         |         |         |
| Berks, Paul - Project Manager    | Acoustics, Failure Analysis, Ne... |         |         |         |         |         |         |         |         |         |         |         |         |         |         |         |
| Bernard, Luc - Project Manager   | Earned Value Analysis, Project...  |         |         |         |         |         |         |         |         |         |         |         |         |         |         |         |
| Childers, Valerie - Architect    | Failure Analysis, Network Man...   |         |         |         |         |         |         |         |         |         |         |         |         |         |         |         |
| Coleman, Joyce - Architect       | Development, Research & Dev...     |         |         |         |         |         |         |         |         |         |         |         |         |         |         |         |
| Dixon, Danielle - Architect      | Architectural Analytics, Busin...  |         |         |         |         |         |         |         |         |         |         |         |         |         |         |         |
| Granger, Paula - Project Manager | Architectural Analytics, Busin...  |         |         |         |         |         |         |         |         |         |         |         |         |         |         |         |

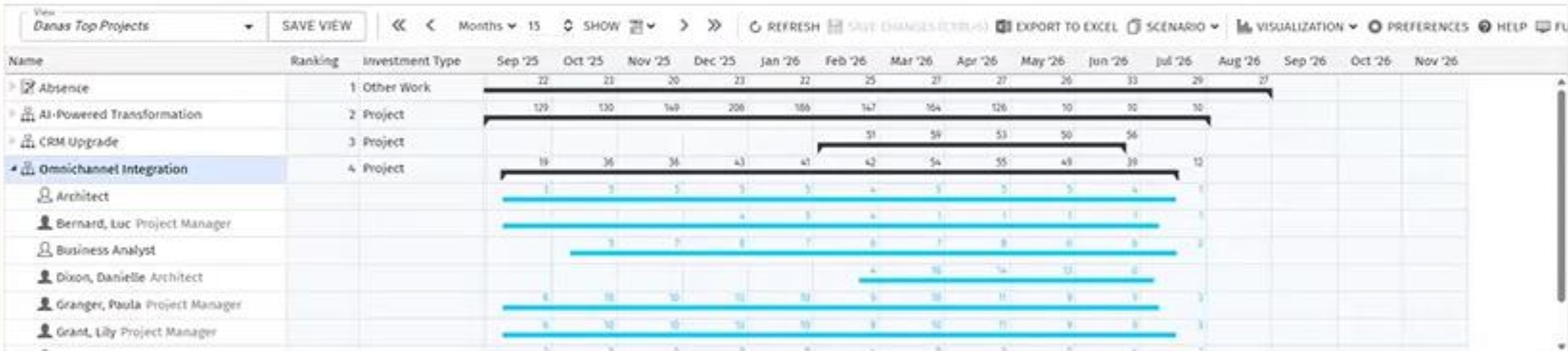
Work Effort Unit: Days | Actuals / Allocation



## itd Advanced Resource Planning 00000002

[itd Advanced Resource Managem...](#) [Organizational Demand](#) [Top Down Planning](#) [Workloads](#) [Manage Resources](#)

## &gt; ALLOCATIONS



## &gt; RESOURCES

[SHOW UTILIZATION FILTER](#) [UTILIZATION SETTINGS](#)



# 5

---

Find the Right Candidate

itd Advanced Resource Planning 00000002

itd Advanced Resource Managem...

Organizational Demand

Top Down Planning

Workloads

Manage Resources

> ALLOCATIONS

View

Danas Top Projects

◀

◀

Months 15

SHOW

📅

▶

▶▶

🔄

📄

🗖

📋

📉

⚙

🔔

HELP

💻

| Name                         | Ranking | Investment Type | Aug '25 | Sep '25 | Oct '25 | Nov '25 | Dec '25 | Jan '26 | Feb '26 | Mar '26 | Apr '26 | May '26 | Jun '26 | Jul '26 | Aug '26 | Sep '26 | Oct '26 |
|------------------------------|---------|-----------------|---------|---------|---------|---------|---------|---------|---------|---------|---------|---------|---------|---------|---------|---------|---------|
| ▶  Absence                   | 1       | Other Work      | 26      | 22      | 23      | 20      | 23      | 22      | 25      | 27      | 27      | 26      | 33      | 29      | 27      |         |         |
| ▶  AI-Powered Transformation | 2       | Project         | 2       | 129     | 130     | 147     | 200     | 186     | 147     | 164     | 126     | 10      | 10      | 10      |         |         |         |
| ▶  CRM Upgrade               | 3       | Project         |         |         |         |         |         |         | 57      | 60      | 56      | 56      | 44      |         |         |         |         |
| ▶  Omnichannel Integration   | 4       | Project         |         | 19      | 36      | 36      | 43      | 43      | 39      | 54      | 55      | 49      | 39      | 12      |         |         |         |
| ▶  BI Reporting Tool         | 5       | Project         | 15      | 15      | 15      | 15      | 15      | 15      | 11      | 8       | 8       | 23      | 23      | 33      | 33      | 33      | 53      |

> RESOURCES

SHOW UTILIZATION FILTER

UTILIZATION SETTINGS

| Name                           | Skills                             | Aug '25 | Sep '25 | Oct '25 | Nov '25 | Dec '25 | Jan '26 | Feb '26 | Mar '26 | Apr '26 | May '26 | Jun '26 | Jul '26 | Aug '26 | Sep '26 | Oct '26 |
|--------------------------------|------------------------------------|---------|---------|---------|---------|---------|---------|---------|---------|---------|---------|---------|---------|---------|---------|---------|
| Arpel, Ian Business Analyst    | Architectural Analytics, Busin...  |         |         |         |         |         |         |         |         |         |         |         |         |         |         |         |
| Berks, Paul Project Manager    | Acoustics, Failure Analysis, Ne... |         |         |         |         |         |         |         |         |         |         |         |         |         |         |         |
| Bernard, Luc Project Manager   | Earned Value Analysis, Project...  |         |         |         |         |         |         |         |         |         |         |         |         |         |         |         |
| Childers, Valerie Architect    | Failure Analysis, Network Man...   |         |         |         |         |         |         |         |         |         |         |         |         |         |         |         |
| Coleman, Joyce Architect       | Development, Research & De...      |         |         |         |         |         |         |         |         |         |         |         |         |         |         |         |
| Dixon, Danielle Architect      | Architectural Analytics, Busin...  |         |         |         |         |         |         |         |         |         |         |         |         |         |         |         |
| Granger, Paula Project Manager | Architectural Analytics, Busin...  |         |         |         |         |         |         |         |         |         |         |         |         |         |         |         |
| Grant, Lily Project Manager    | Earned Value Analysis, Project...  |         |         |         |         |         |         |         |         |         |         |         |         |         |         |         |

[Jtd Advanced Resource Managem...](#)
[Organizational Demand](#)
[Top Down Planning](#)
[Workloads](#)
[Manage Resources](#)

View: **Dance Too Projects**  **SAVE VIEW**   Months  15  **SHOW** 

DETAILED

SHOW UTILIZATION FILTER UTILIZATION SETTINGS

Work Effort Unit: Days | Actuals / Allocation

# 6



**From Planning to Assignments**



## itd Advanced Resource Planning 00000002

[itd Advanced Resource Management...](#)
[Organizational Demand](#)
[Top Down Planning](#)
[Workloads](#)
[Manage Resources](#)

## &gt; ALLOCATIONS

View: Danas Top Projects Months: 15 SHOW HELP

| Name                         | Ranking | Investment Type | Aug '25 | Sep '25 | Oct '25 | Nov '25 | Dec '25 | Jan '26 | Feb '26 | Mar '26 | Apr '26 | May '26 | Jun '26 | Jul '26 | Aug '26 | Sep '26 | Oct '26 |
|------------------------------|---------|-----------------|---------|---------|---------|---------|---------|---------|---------|---------|---------|---------|---------|---------|---------|---------|---------|
| >  Absence                   | 1       | Other Work      | 26      | 22      | 23      | 28      | 23      | 22      | 25      | 27      | 27      | 28      | 33      | 29      | 37      |         |         |
| >  AI-Powered Transformation | 2       | Project         | 2       | 129     | 130     | 147     | 200     | 186     | 147     | 164     | 126     | 10      | 10      | 10      |         |         |         |
| >  CRM Upgrade               | 3       | Project         |         |         |         |         |         |         | 57      | 38      | 36      | 36      | 45      |         |         |         |         |
| >  Omnichannel Integration   | 4       | Project         |         | 19      | 36      | 36      | 43      | 43      | 39      | 54      | 55      | 49      | 39      | 12      |         |         |         |
| >  BI Reporting Tool         | 5       | Project         | 15      | 15      | 15      | 15      | 15      | 15      | 11      | 20      | 23      | 38      | 38      | 48      | 33      | 33      | 53      |

## &gt; RESOURCES

[SHOW UTILIZATION FILTER](#)
[UTILIZATION SETTINGS](#)

| Name                         | Skills                             | Aug '25 | Sep '25 | Oct '25 | Nov '25 | Dec '25 | Jan '26 | Feb '26 | Mar '26 | Apr '26 | May '26 | Jun '26 | Jul '26 | Aug '26 | Sep '26 | Oct '26 |
|------------------------------|------------------------------------|---------|---------|---------|---------|---------|---------|---------|---------|---------|---------|---------|---------|---------|---------|---------|
| Arpel, Ian Business Analyst  | Architectural Analytics, Busin...  |         |         |         |         |         |         |         |         |         |         |         |         |         |         |         |
| Berks, Paul Project Manager  | Acoustics, Failure Analysis, Ne... |         |         |         |         |         |         |         |         |         |         |         |         |         |         |         |
| Bernard, Luc Project Manager | Earned Value Analysis, Project...  |         |         |         |         |         |         |         |         |         |         |         |         |         |         |         |
| Childers, Valerie Architect  | Failure Analysis, Network Man...   |         |         |         |         |         |         |         |         |         |         |         |         |         |         |         |
| Coleman, Joyce Architect     | Development, Research & De...      |         |         |         |         |         |         |         |         |         |         |         |         |         |         |         |
| Dixon, Danielle Architect    | Architectural Analytics, Busin...  |         |         |         |         |         |         |         |         |         |         |         |         |         |         |         |

Work (Effort Unit: Days) | Actuals / Allocation

Displaying 1 - 7 of 31

## itd Advanced Resource Planning 00000002

[itd Advanced Resource Managem...](#)
[Organizational Demand](#)
[Top Down Planning](#)
[Workloads](#)
[Manage Resources](#)

## &gt; ASSIGNMENTS



## &gt; RESOURCES



Work (Effort Unit: System Standard (Hours)) | Actuals / ETC

Displaying 1 - 7 of 63

# 7

## Capacity Insights by Role

## itd Advanced Resource Planning 00000002

itd Advanced Resource Managem...

Organizational Demand

Top Down Planning

Workloads

Manage Resources

## &gt; ASSIGNMENTS

View  
Danas Unstaffed Tasks

Months 12

REFRESH
 SAVE CHANGES (CTRL+S)
 EXPORT TO EXCEL
 VISUALIZATION
 PREFERENCES
 HELP
 FULLSCREEN



## &gt; RESOURCES



Work Effort Unit: System Standard (Hours) | Actuals / ETC

Displaying 1 - 7 of 63



## itd Advanced Resource Planning 00000002

itd Advanced Resource Managem...

Organizational Demand

Top Down Planning

Workloads

Manage Resources

## &gt; ALLOCATIONS

SHOW UTILIZATION FILTER

UTILIZATION SETTINGS

|   |            |            |                                   |              |              |              |              |              |             |              |             |                 |         |          |  |               |  |             |  |      |  |            |  |
|---|------------|------------|-----------------------------------|--------------|--------------|--------------|--------------|--------------|-------------|--------------|-------------|-----------------|---------|----------|--|---------------|--|-------------|--|------|--|------------|--|
| View: My Architects                         |            |            |                                   | Months 12    |              | SHOW         |              | REFRESH      |             | SAVE CHANGES |             | EXPORT TO EXCEL |         | SCENARIO |  | VISUALIZATION |  | PREFERENCES |  | HELP |  | FULLSCREEN |  |
| Name  | Start      | Finish     | Skills                            | Aug '25      | Sep '25      | Oct '25      | Nov '25      | Dec '25      | Jan '26     | Feb '26      | Mar '26     | Apr '26         | DETAILS |          |  |               |  |             |  |      |  |            |  |
| > Architect                                 | 01/03/2023 | 11/30/2030 |                                   | 60.9 / -18.7 | 51.4 / -22.9 | 53.1 / -32.3 | 49.1 / -58.4 | 42.0 / -25.0 | 23.7 / 17.4 | 14.8 / 30.8  | 20.3 / 16.6 | 11.3 / 59.5     |         |          |  |               |  |             |  |      |  |            |  |
| > Childers, Valerie Architect               | 09/01/2023 | 09/11/2027 | Failure Analysis, Network Ma...   | 21.0 / 0.0   | 16.3 / 5.7   | 23.5 / -2.5  | 21.8 / -1.8  | 24.3 / -1.1  | 21.9 / 0.3  | 15.0 / 5.0   | 16.8 / 5.2  | 10.8 / 11.0     |         |          |  |               |  |             |  |      |  |            |  |
| > Coleman, Joyce Architect                  | 06/15/2024 | 09/30/2027 | Development, Research & De...     | 18.0 / 3.0   | 12.0 / 10.0  | 23.0 / 0.0   | 20.0 / 0.0   | 23.0 / 0.0   | 22.0 / 0.0  | 20.0 / 0.0   | 22.0 / 0.0  | 22.0 / 0.0      |         |          |  |               |  |             |  |      |  |            |  |
| > Dixon, Danielle Architect                 | 10/01/2024 | 09/11/2027 | Architectural Analytics, Busin... | 11.0 / 10.0  | 22.3 / -0.3  | 24.0 / -1.0  | 34.6 / -14.6 | 26.9 / -3.9  | 21.6 / 0.4  | 10.3 / 9.7   | 23.3 / -1.3 | 18.8 / 3.1      |         |          |  |               |  |             |  |      |  |            |  |
| > Hayes, Justin Architect                   | 01/03/2023 | 04/24/2026 | Earned Value Analysis, Projec...  | 10.0 / 11.0  | 14.7 / 7.3   | 14.7 / 8.3   | 12.8 / 7.2   | 23.0 / 0.0   | 13.3 / 8.7  | 12.9 / 7.1   | 13.3 / 8.7  | 8.8 / 13.2      |         |          |  |               |  |             |  |      |  |            |  |
| ABLE Payments Module                        | 06/15/2024 | 12/31/2025 |                                   |              |              |              |              | 5.0          |             |              |             |                 |         |          |  |               |  |             |  |      |  |            |  |
| AI-Powered Transformation                   | 09/01/2025 | 04/24/2026 |                                   |              | 14.7         | 14.7         | 12.8         | 10.0         | 13.3        | 12.9         | 13.3        | 8.8             |         |          |  |               |  |             |  |      |  |            |  |
| GDPR Compliance - Loan Application          | 03/05/2025 | 12/31/2025 |                                   |              |              |              |              | 5.0          |             |              |             |                 |         |          |  |               |  |             |  |      |  |            |  |
| Relocate Infrastructure to Las Vegas Data C | 12/11/2024 | 12/31/2025 |                                   | 10.0         |              |              |              | 3.0          |             |              |             |                 |         |          |  |               |  |             |  |      |  |            |  |
| Run the Business                            | 09/01/2024 | 07/31/2025 |                                   |              |              |              |              |              |             |              |             |                 |         |          |  |               |  |             |  |      |  |            |  |
| > McKay, Erin Architect                     | 05/08/2024 | 04/24/2026 | Architectural Analytics, Busin... | 21.0 / 0.0   | 22.0 / 0.0   | 23.0 / 0.0   | 19.6 / 0.4   | 24.0 / -1.0  | 21.0 / 1.0  | 21.0 / -1.0  | 22.9 / -0.9 | 18.6 / 3.4      |         |          |  |               |  |             |  |      |  |            |  |
| > Morris, Tom Architect                     | 06/10/2023 | 06/11/2026 | Architectural Analytics, Busin... | 19.0 / 2.0   | 19.0 / 3.0   | 19.0 / 4.0   | 19.0 / 1.0   | 1.0 / 22.0   | 0.0 / 22.0  | 10.0 / 10.0  | 10.0 / 12.0 | 10.0 / 12.0     |         |          |  |               |  |             |  |      |  |            |  |
| > Oliva, Vince Architect                    | 07/01/2025 | 04/24/2026 | Acoustics, Failure Analysis, N... | 10.8 / 10.2  | 21.6 / 0.4   | 19.3 / 3.7   | 20.0 / 0.0   | 22.1 / 0.9   | 23.8 / -1.8 | 19.3 / 0.7   | 24.4 / -2.4 | 12.9 / 9.1      |         |          |  |               |  |             |  |      |  |            |  |
| > Ramos, Adriana Architect                  | 01/01/2025 | 04/24/2026 | Operations, Software Develo...    | 15.0 / 6.0   | 19.6 / 2.4   | 19.6 / 3.4   | 21.6 / -1.6  | 23.0 / 0.0   | 11.2 / 10.8 | 5.9 / 14.1   | 6.3 / 15.7  | 2.8 / 19.2      |         |          |  |               |  |             |  |      |  |            |  |
| AI-Powered Transformation                   | 11/14/2025 | 04/24/2026 |                                   |              |              |              | 2.0          | 5.0          | 11.2        | 5.9          | 6.3         | 2.8             |         |          |  |               |  |             |  |      |  |            |  |
| eBusiness Mobile Network                    | 01/01/2025 | 12/31/2025 |                                   | 15.0         | 15.0         | 15.0         | 15.0         | 18.0         |             |              |             |                 |         |          |  |               |  |             |  |      |  |            |  |
| New Online Application                      | 11/12/2025 | 11/12/2025 |                                   |              |              |              |              |              |             |              |             |                 |         |          |  |               |  |             |  |      |  |            |  |
| Run the Business                            | 09/01/2024 | 11/30/2025 |                                   |              | 4.6          | 4.6          | 4.6          |              |             |              |             |                 |         |          |  |               |  |             |  |      |  |            |  |

# 8



## Creating Scenarios with Resources

## itd Advanced Resource Planning 00000002

[itd Advanced Resource Managem...](#)
[Organizational Demand](#)
[Top Down Planning](#)
[Workloads](#)
[Manage Resources](#)

## &gt; ALLOCATIONS

View: Danas Top Projects Months: 15 SHOW HELP

| Name                         | Ranking | Investment Type | Aug '25 | Sep '25 | Oct '25 | Nov '25 | Dec '25 | Jan '26 | Feb '26 | Mar '26 | Apr '26 | May '26 | Jun '26 | Jul '26 | Aug '26 | Sep '26 | Oct '26 |
|------------------------------|---------|-----------------|---------|---------|---------|---------|---------|---------|---------|---------|---------|---------|---------|---------|---------|---------|---------|
| >  Absence                   | 1       | Other Work      | 26      | 22      | 23      | 28      | 23      | 22      | 25      | 27      | 27      | 26      | 33      | 29      | 37      |         |         |
| >  AI-Powered Transformation | 2       | Project         | 2       | 129     | 130     | 142     | 174     | 182     | 144     | 144     | 126     | 10      | 10      | 10      |         |         |         |
| >  CRM Upgrade               | 3       | Project         |         |         | 10      | 10      | 10      | 10      | 57      | 38      | 36      | 36      | 45      |         |         |         |         |
| >  Omnichannel Integration   | 4       | Project         |         | 19      | 36      | 44      | 53      | 54      | 39      | 54      | 55      | 49      | 36      | 12      |         |         |         |
| >  BI Reporting Tool         | 5       | Project         | 15      | 15      | 15      | 26      | 15      | 15      | 71      | 20      | 23      | 36      | 38      | 48      | 33      | 33      | 53      |

## &gt; RESOURCES

[SHOW UTILIZATION FILTER](#)
[UTILIZATION SETTINGS](#)

| Name                           | Skills                             | Aug '25 | Sep '25 | Oct '25 | Nov '25 | Dec '25 | Jan '26 | Feb '26 | Mar '26 | Apr '26 | May '26 | Jun '26 | Jul '26 | Aug '26 | Sep '26 | Oct '26 |
|--------------------------------|------------------------------------|---------|---------|---------|---------|---------|---------|---------|---------|---------|---------|---------|---------|---------|---------|---------|
| Arpel, Ian - Business Analyst  | Architectural Analytics, Busin...  |         |         |         |         |         |         |         |         |         |         |         |         |         |         |         |
| Berks, Paul - Project Manager  | Acoustics, Failure Analysis, Ne... |         |         |         |         |         |         |         |         |         |         |         |         |         |         |         |
| Bernard, Luc - Project Manager | Earned Value Analysis, Project...  |         |         |         |         |         |         |         |         |         |         |         |         |         |         |         |
| Childers, Valerie - Architect  | Failure Analysis, Network Man...   |         |         |         |         |         |         |         |         |         |         |         |         |         |         |         |
| Coleman, Joyce - Architect     | Development, Research & De...      |         |         |         |         |         |         |         |         |         |         |         |         |         |         |         |
| Dixon, Danielle - Architect    | Architectural Analytics, Busin...  |         |         |         |         |         |         |         |         |         |         |         |         |         |         |         |

Work Effort Unit: Days | Actuals / Allocation

Displaying 1 - 7 of 31

# 9



## Balancing Portfolios and Resource Capacity

## Roadmaps



New Roadmap

Search...



View

Roadmap Overview



Save

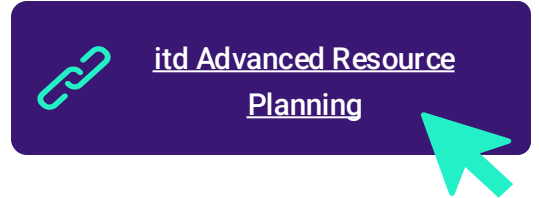
Select all  all

Group By

| Starred                             | Roadmap Name                              | Category                | Executive        | Status    | Type        | Author         | Finish   | Start Period |
|-------------------------------------|---|-------------------------|------------------|-----------|-------------|----------------|----------|--------------|
| <input type="checkbox"/>            | BSR Retail Banking Product Line Roadmap   | Customer Facing Roadmap | Berks, Paul      | Draft     | Product     | Arpel, Ian     | 12/31/24 | 2023         |
| <input type="checkbox"/>            | Business Banking Engagement Roadmap       | BRP Planning            | Barry, Debra     | Draft     | Investment  | Arpel, Ian     | 12/31/24 | 2023         |
| <input type="checkbox"/>            | Business Capability Map                   | Customer Facing Roadmap | Higgins, Tanya   | Draft     | Application | Arpel, Ian     | 12/31/23 | 2023         |
| <input type="checkbox"/>            | Digital Banking Product Line Roadmap      | Market Launch           | Clark, Patrick   | Draft     | Product     | Arpel, Ian     | 12/31/24 | 2023         |
| <input type="checkbox"/>            | Digital Banking Sustainability Roadmap    | BRP Planning            | Clark, Patrick   | Draft     | Investment  | Clark, Patrick | 12/31/23 | 2023         |
| <input type="checkbox"/>            | Digital Feature Roadmap (Cross workspace) | BRP Planning            | Carmen, Ed       | Draft     | Product     | Arpel, Ian     | 12/31/24 | 2023         |
| <input type="checkbox"/>            | Fiscal Plan - Ideas and Projects 2024     | Market Launch           | Berks, Paul      | Draft     | Investment  | Arpel, Ian     | 12/31/24 | 2024         |
| <input checked="" type="checkbox"/> | Fiscal Plan - Ideas and Projects 2025/26  | Market Launch           | Berks, Paul      | Draft     | Investment  | Lewis, Dana    | 12/31/25 | 2024         |
| <input type="checkbox"/>            | GlobalX Acquisition                       | BRP Planning            | Baker, Isaac     | Published | Investment  | Arpel, Ian     | 12/31/24 | 2023         |
| <input type="checkbox"/>            | Key Result Roadmap                        | BRP Planning            | Coleman, Joyce   | Draft     | Product     | Lewis, Dana    | 12/31/25 | 2024         |
| <input type="checkbox"/>            | Market Launch - Emea and Australia        |                         | Rodriguez, Anita | Draft     | Investment  | Rodriguez, ... | 12/31/23 | 2023         |
| <input type="checkbox"/>            | Minimal Online Product Roadmap            | Customer Facing Roadmap | Bauer, Joyce     | Published | Product     | Arpel, Ian     | 12/31/24 | 2023         |
| <input type="checkbox"/>            | Strategic Themes & Objectives             | BRP Planning            | Fleming, Nicole  | Draft     | Product     | Arpel, Ian     | 12/31/24 | 2022         |



# References: itd Advanced Resource Planning



## 5,000+ Satisfied Users

---



"Thanks to itd Advanced Resource Planning, we can finally simulate different resource planning scenarios based on our prioritization process and our business planning in Clarity. itdesign's team was dedicated to working with us to ensure itd Advanced Resource Planning met our requirements and delivered on our objectives."

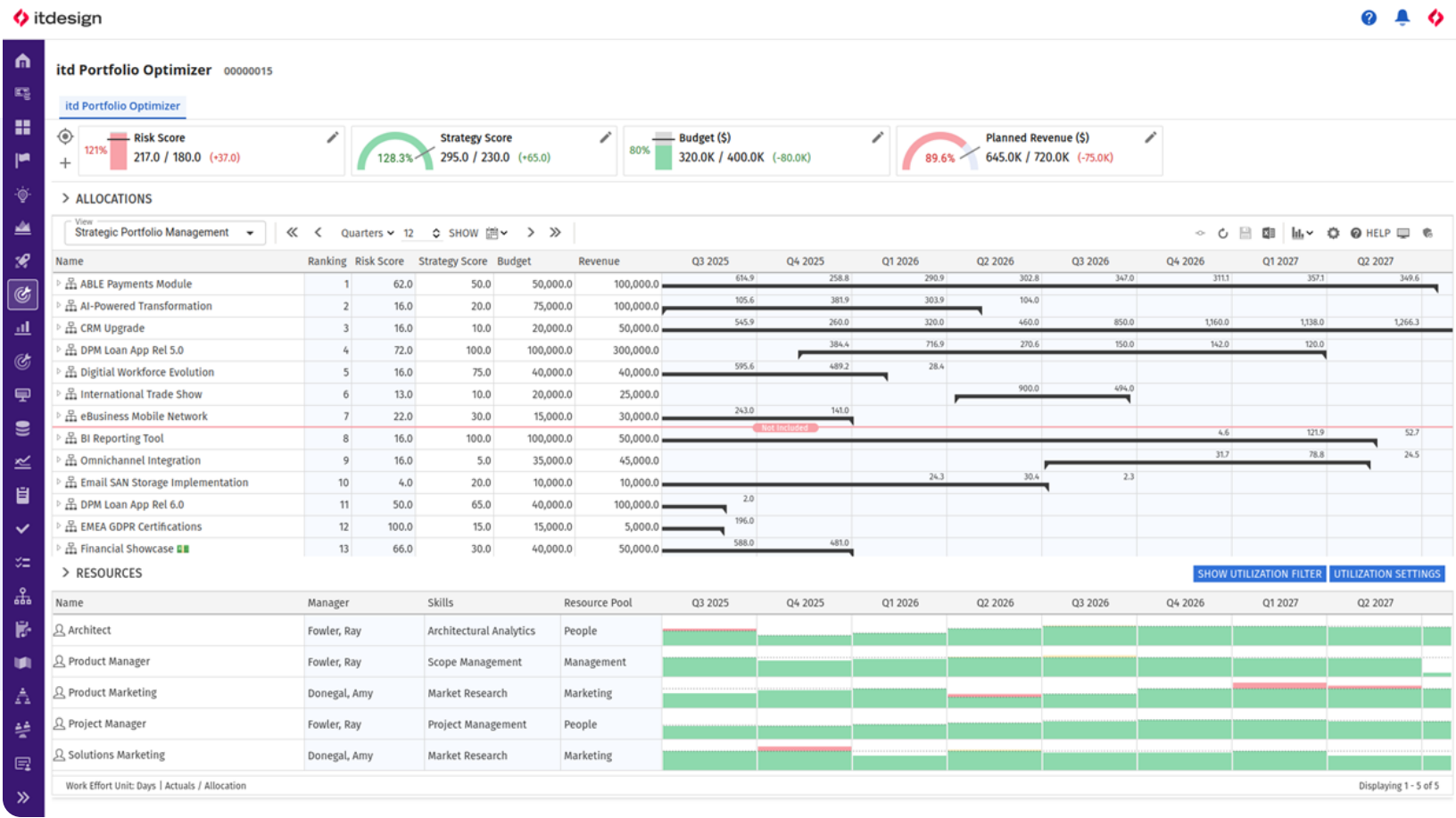
Helder Monteiro, Team Lead Project Delivery Office  
The Workers' Compensation Board – Alberta



**... and much more!**

# Ready to Optimize? Join Our itd Portfolio Optimizer Session!

Today at 4:40 PM!



Stefan



Patrick

# Questions?



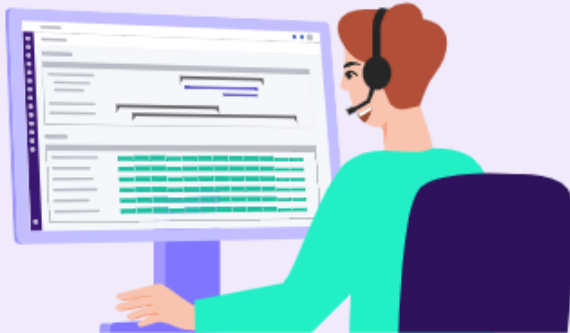
# Let's plan smarter – together.



[itd Advanced Resource  
Planning](#)



## (1) Request Live Demo



We show you the tool and its features in a live demo.  
Please feel free to contact us.

## (2) Get Free Trial for 30 Days



Test itd Advanced Resource Planning directly in your  
own Clarity system or with a test account.

## (3) Quick and Easy Installation



We are happy to support you with the add-on's  
installation and onboarding of your users.





**Thank You for Your Attention &  
See You Outside!**

**itdesign GmbH**

Friedrichstr. 12  
72072 Tübingen  
Deutschland  
[www.itdesign.de](http://www.itdesign.de)