



Sponsored by

ValueOps®
by Broadcom

Clarity®
by Broadcom

Rally®
by Broadcom

ConnectALL
by Broadcom

Insights
by Broadcom

Introducing Predictive Analytics

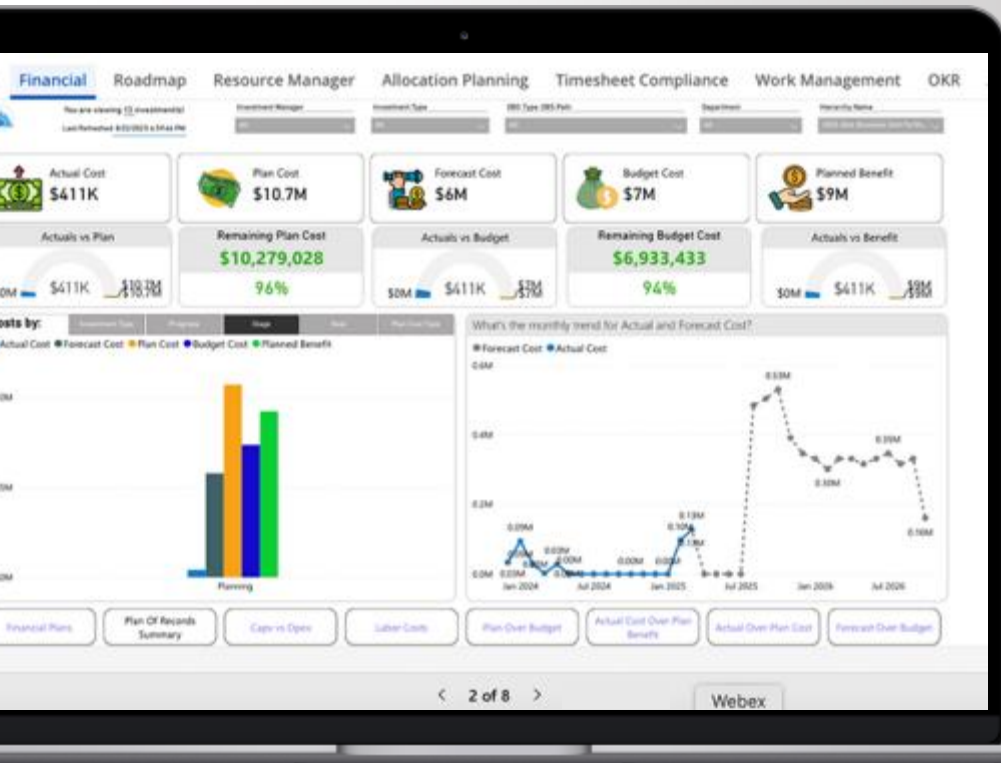
Shift from Reactive to Proactive Decision Making

Your Guides:
Peter Hughes & Jerry Dolak

Gold Sponsor



From Looking Back to Looking Ahead



Move from hindsight to foresight & action.

What we heard?

3

I want early warnings if my **project schedule** is at risk, not just after the deadlines slip.

It's hard to know whether the dates I've set will hold.

I need **confidence scores**

Show me which **milestones** are most likely to slip so I can take action before it's too late

I'd like predictive insights into potential **budget overruns**

Help me see when **resources** are overallocated across projects

I want the system to highlight **dependencies** that could trigger cascading delays.

Give me a clear, simple view of which **tasks and deliverables** I should focus on first

Make it easier to see potential **risks** across the whole portfolio, not just one project

If **vendor performance** has been poor in the past, flag that risk to me upfront

To AI or
Not to AI,
that is
question



From Engagement to Insight to Action

Rego Nudge 13/08 21:00

Welcome to RegoLink Nudge!

Rego Nudge Wednesday 20:59

Clarity Nudge

Do you have the people, tools and support you need to complete your tasks on NextGen Innovation? *

☐ 1 = Severely understaffed

☐ 2

☐ 3

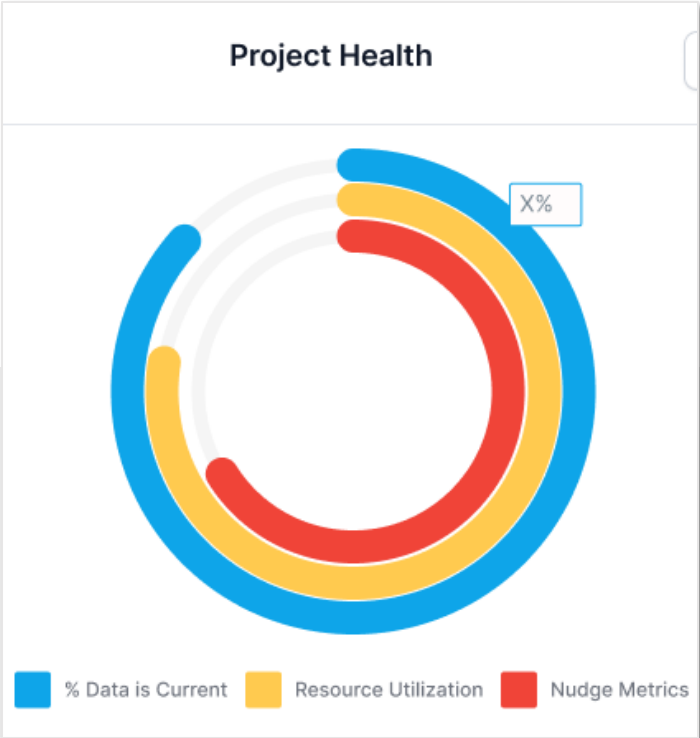
☐ 4

☐ 5 = Fully covered

Send

Type a message

Nudge for Team Sentiment



Comprehensive Health Analysis

Suggestion	Description
Escalate Blockers Promptly	Add an "Escalations" slot to daily stand-ups; each blocker with owner, date, and next action. For impediments > 48 h, raise them in the steering committee with a clear ask (decision, resource, risk acceptance).
Backlog Re-prioritisation	Lead a quick MOSCOW or WSJF exercise with product owner to re-rank backlog items. Define "Could/Won't" tasks to free capacity. Communicate new priorities so the team can focus on high-value work only.
Comp-Time & Recognition	Offer compensated time-off after crunch period; organise a wellness afternoon, or publicly recognise achievements in the company channel. Tangible rest and praise restore morale quickly.

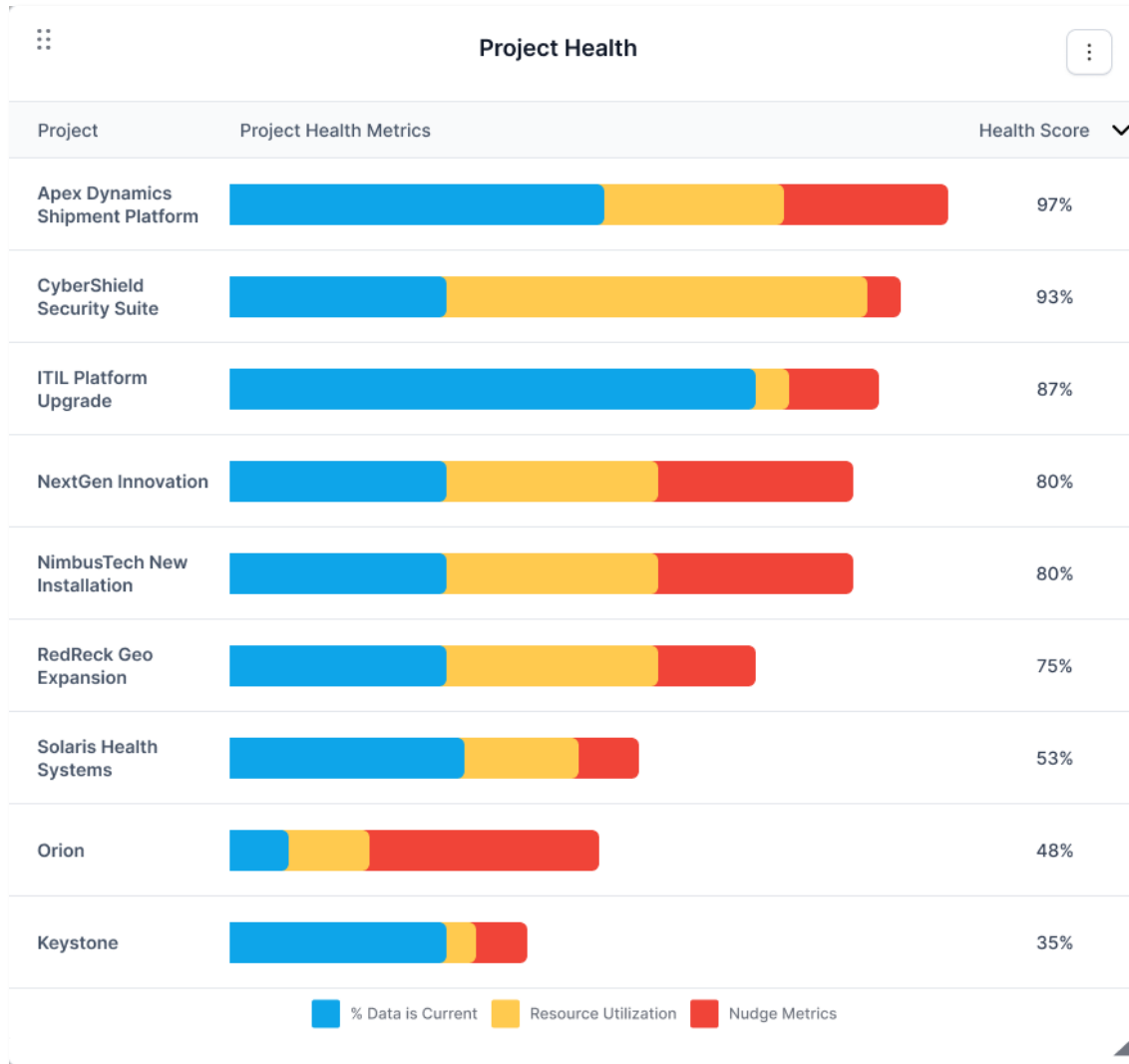
Actionable Dashboards

Early Sight of Development

Progress to date

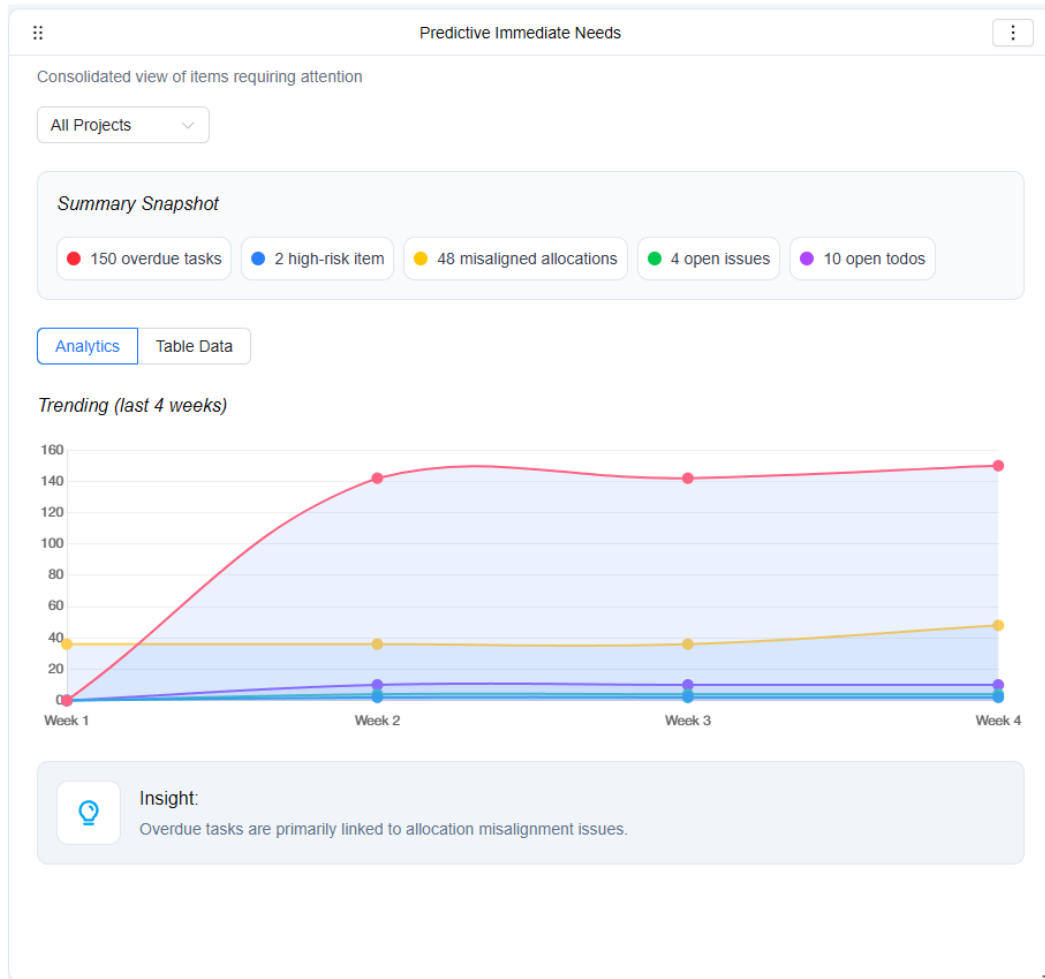


Project Health (Portfolio or Program)



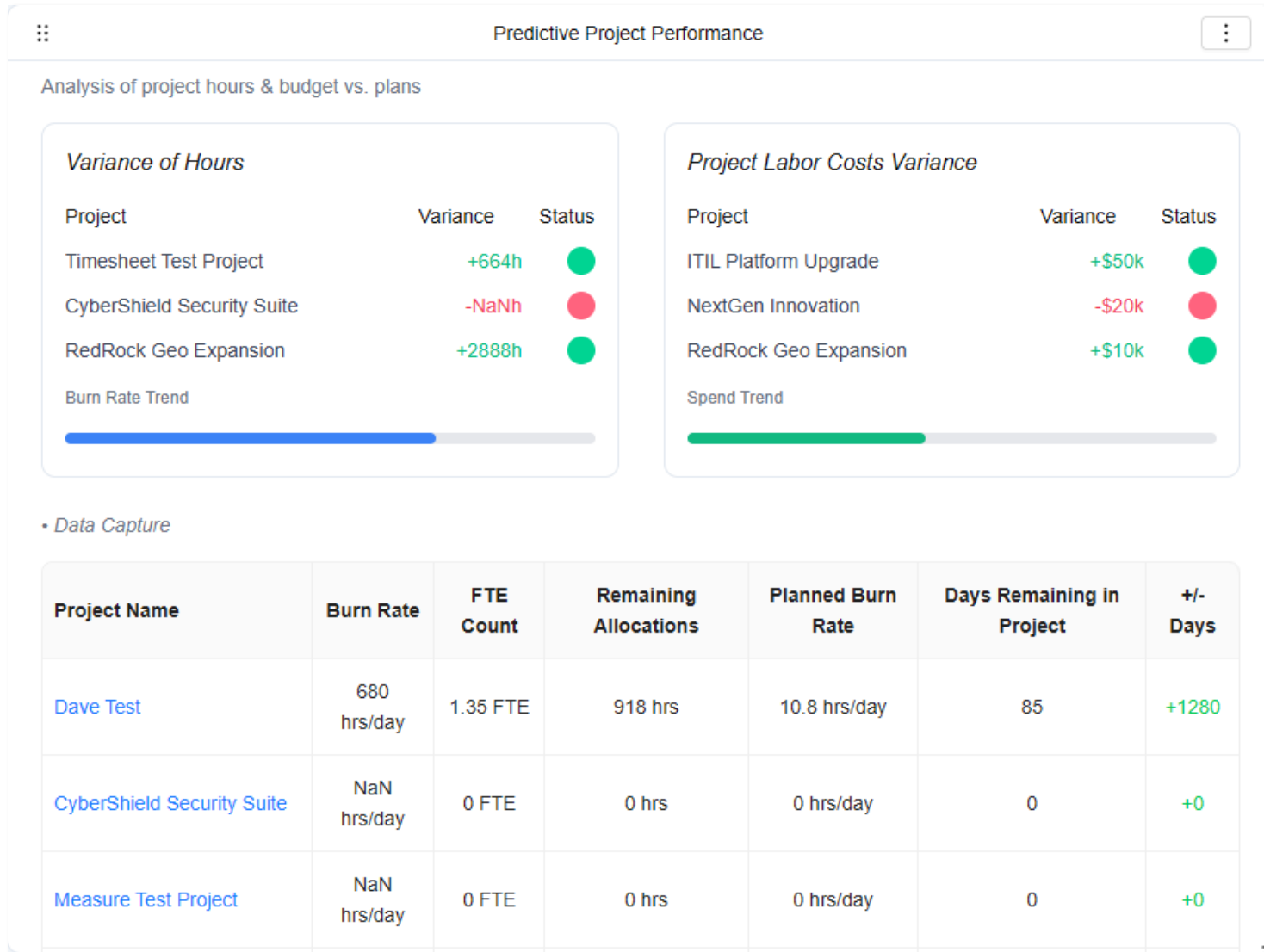
- Provides a unified project “health score” by combining insights from Nudge, Project Metrics and Predictive Analytics
- Unlike traditional RAG status reports, the Project Health delivers a comprehensive and data-driven evaluation of overall project performance

Immediate Needs



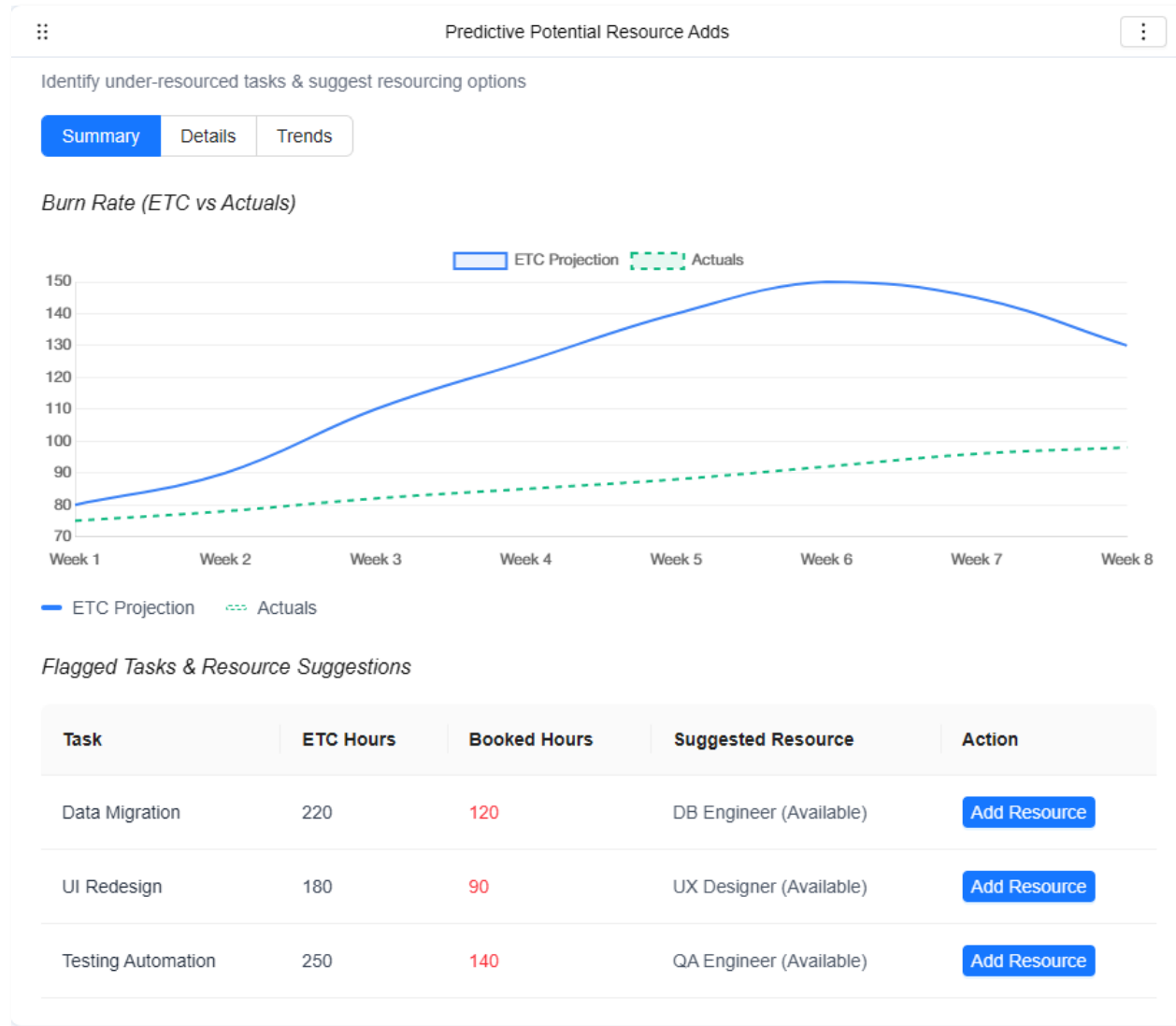
- Consolidate critical items requiring immediate attention, including past-due tasks, upcoming work (within the next two weeks) and misalignment on planned work (allocations) vs. actual time tracked
- Improve visibility and actionability by highlighting risks, supporting prioritization, and enabling direct navigation to the resolve underlying work items.

Project Performance



- Highlights over/under performing projects by comparing actuals vs. allocations, burn rate trends and timelines to predict budget and schedule variances
- Enables proactive decision-making by surfacing metrics that trigger executive and PM follow-up

Potential Resource Adds




- Identifies opportunities to accelerate schedules by flagging tasks with high ETCs and low actual burn rates
- Recommends available resources with matching roles to optimize staffing and improve delivery timelines

Resource Recommendations

Predictive Resource Recommendations

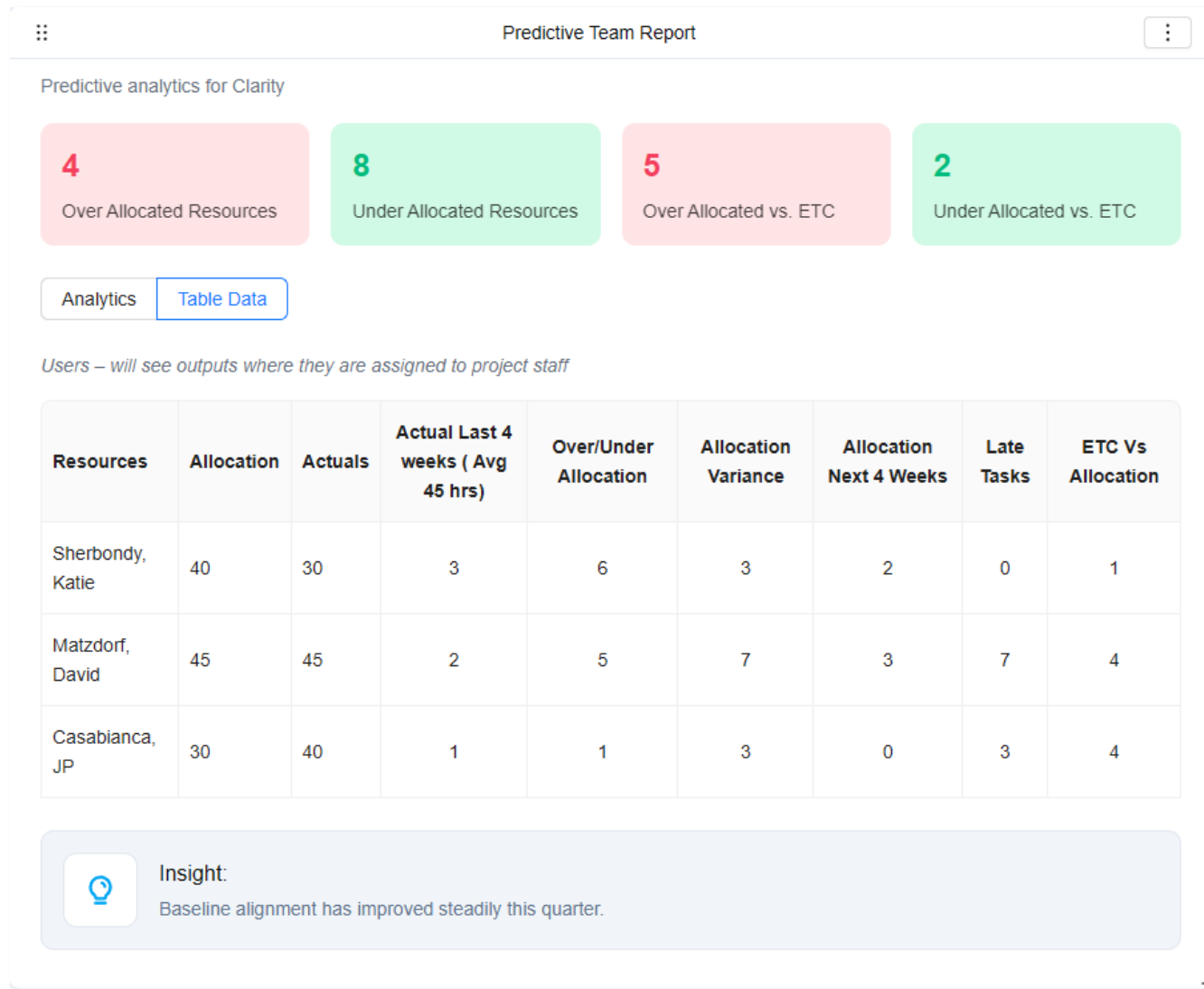
Prioritized tasks by project health, due date, and effort

Work Priority	Task	Project	Status	Project Allocation (%)	Due	Effort	Assignment End Date
1	Finalize budget review	Project Phoenix	●	<div><div></div></div> 40%	2 days	5h	9/1
1	QA critical bug fix	Project Nova	●	<div><div></div></div> 40%	1 day	6h	10/5
2	Update risk log	Project Atlas	●	<div><div></div></div> 15%	5 days	3h	11/1
3	Prepare sprint demo	Project Orion	●	<div><div></div></div> 5%	8 days	4h	8/15

 **Insight:**
Focus on red-status projects: Phoenix & Nova require immediate attention.

- Consolidates and sorts tasks by priority score (project health, due dates, effort) to guide resources to the most urgent work
- Aligns individual focus with project needs, ensuring critical tasks on at-risk projects receive higher attention to improve delivery outcomes

Team Report



- Unified view of resource health, highlighting risks such as over/under allocation, excessive hours and variance against allocation

Where should we go next?

Discussion



What should we focus on next?



Master Clarity with Rego University

Earn Certifications in
Administration, Leadership,
and Technical Proficiency

Let Rego be your guide.



Elevate Your Professional Expertise with Rego University Certifications

Rego is excited to introduce our **new certification programs**, designed to enhance your expertise in Clarity administration, leadership, and technical skills. These certifications provide hands-on experience and knowledge to excel in your career.



Certification Requirements:

- ✓ **Completion:** 12 units per certification track
- ✓ **Eligibility:** Open to all Rego University attendees



Important Reminder:

To have your certification **credits tracked**, ensure you **complete the class surveys in the app** after each session. This step is critical for certification progress.

Questions?



Thank You For Attending Rego University

Instructions for PMI credits

- Access your account at pmi.org
- Click on **Certifications**
- Click on **Maintain My Certification**
- Click on **Visit CCR's** button under the **Report PDU's**
- Click on **Report PDU's**
- Click on **Course or Training**
- Class Provider = **Rego Consulting**
- Class Name = **regoUniversity**
- Course **Description**
- Date Started = **Today's Date**
- Date Completed = **Today's Date**
- Hours Completed = **1 PDU per hour of class time**
- Training classes = **Technical**
- Click on **I agree** and **Submit**



Let us know how we can improve!
Don't forget to fill out the class survey.



Phone

888.813.0444



Email

info@regoconsulting.com



Website

www.regouniversity.com