



regoUniversity

KANSAS CITY • 2024

Sponsored by

ValueOps
by Broadcom

Clarity
by Broadcom

Rally
by Broadcom

ConnectALL
by Broadcom

Insights
by Broadcom

Envision your SPM Future with Rego's Digital Ecosystem Assessment

Your Guides:
Jacob Cancelliere and Matthew Palicki

Agenda

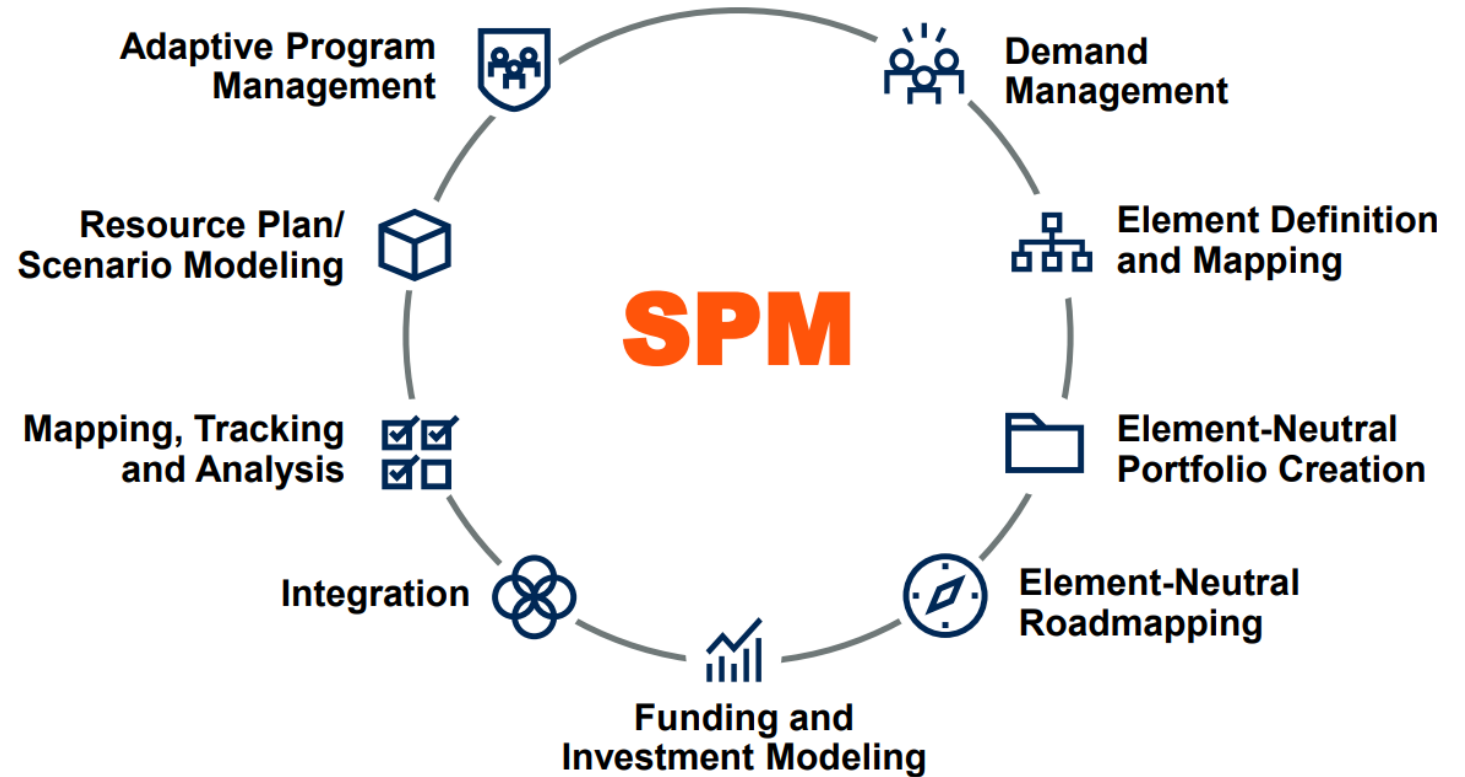
- What is SPM?
- What is a Digital Ecosystem Assessment (DEA)?
- Rego Perspective on Current Themes
- What are the potential deliverables or outcomes?
- Summary
- Q&A / Additional Resources

Open Mic

- Do you have a backlog or roadmap for Clarity features and adoption?
 - If yes, what is included? What horizons does it cover? What's the definition of success/done?
- Does your organization have a common understanding of systems of record vs. systems of reference in your digital ecosystem?
- Have you included People and Process in those Roadmaps/Backlog?

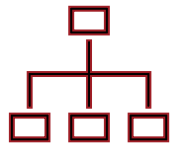
SPM: A Connected Strategy to Achieve Business Value

Strategic Portfolio Management (SPM) is a set of business capabilities, processes and supporting technologies that can focus an organization's finite resources to execute enterprise wide business strategy. **Gartner.**



SPM Framework Goals

Orchestrate end-to-end investment and work/project management processes to enable transparency, decision-support, and controls.



Work Connected to Strategy

Visibility to how the SPM practices and solutions connect to our business processes and strategy



Leverage Best Practices

Support multiple ways of working with fit for purpose methodologies that are aligned to industry standards



Integrate and Automate

Better together technologies to drive quality, efficiency, scalability and an optimized ecosystem



Leverage Leading and Existing Toolsets

Alignment to industry leading tools without ongoing technical debt by using toolsets already owned

What is SPM? (Strategic Portfolio Management)

Strategic Portfolio Management (SPM) Tools



Clarity mapped as one of the Leaders in Strategic Portfolio Management (SPM), Demand Intake and Investment decisions.*

➤ Strengths

1. Robustness and high scalability.
2. Clarity's user interface and user experience (UI/UX).
3. Broadcom's networking at worldwide scale (PPM industry reference).

* Source: Gartner

What is a Digital Ecosystem Assessment?



regoUniversity

KANSAS CITY • 2024

Stop, Collaborate and Listen

- Reflect on current state
- Listen to large coverage of stakeholders
 - Up as high as C level
 - Talk to Team Members
 - Every Persona in between



Illustrative Interview Roster (Example)

Name	Job Title	Primary PPM Function/Use Case	Interview Date/Time (EST)
	Director, IT Finance	Financial Services & Project Accounting	
	Project Manager	PM/BA user perspective	
	Director, Resource Management Office	Resource Capacity & Allocations Planning	
	Manager, End User Experience	Resource Manager	
	Manager, DBA & Integration	Resource Manager	
	Team Lead, Data Analytics	Resource Manager	
	Director, Business Solutions	Business relationship management	
	Business Success Manager	Business relationship management	
	Director, Business Solutions	Business relationship management	
	Application Support Specialist	Clarity application support	
	Project Manager	Project Management	
	IT Delivery Manager	Project Management	
	Agile Delivery Lead	Agile Delivery / Solution Train Planning	
	VP, Strategy & Transformation	Executive Reporting / Strategic Planning	
	Director, PPM Platform Services	PPM Process & Data Governance	

Looking Across Tools/Technology

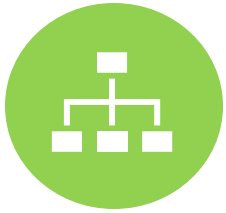
The goal of an Ecosystem Assessment is to look across data, technology, and platforms to reveal efficiencies, value, and a more balance Digital Ecosystem.

The graphic features a green background with a topographic map pattern and a forest scene. At the top center is the Rego Consulting logo, a stylized mountain peak inside a circle, with the text "regoc consulting" and the tagline "Let Rego Be Your Guide" below it. The main title "Digital Ecosystem Assessment" is prominently displayed in large white font, followed by the subtitle "Create a Thriving Environment". Below this, a network of interconnected nodes is shown, each representing a business function or technology: Customer Experience, Financials, PPM, CRM, ITSM, Work Management, HR, DWH, Agile, AI, Intake, APM, DAM, Business Intelligence, and WCM. Dashed white lines connect these nodes, illustrating their interdependence.

An Interconnected Ecosystem is **Essential** to Drive Digital Transformation.

Assessment Overview

A holistic assessment that evaluates the current state of your project management practices across the following 4 key pillars to compare against industry best practice. Rego will then develop recommendations for a future state.



People

- Well defined roles and responsibilities for optimal execution
- Alignment of location and skills to right roles to execute capabilities



Process

- Streamlined and standardized execution processes
- Standardized key decision points, handoffs, and interdependencies



Technology

- Aligned technologies that enable planning, execution, and measurement
- Ensure data interoperability across all platforms

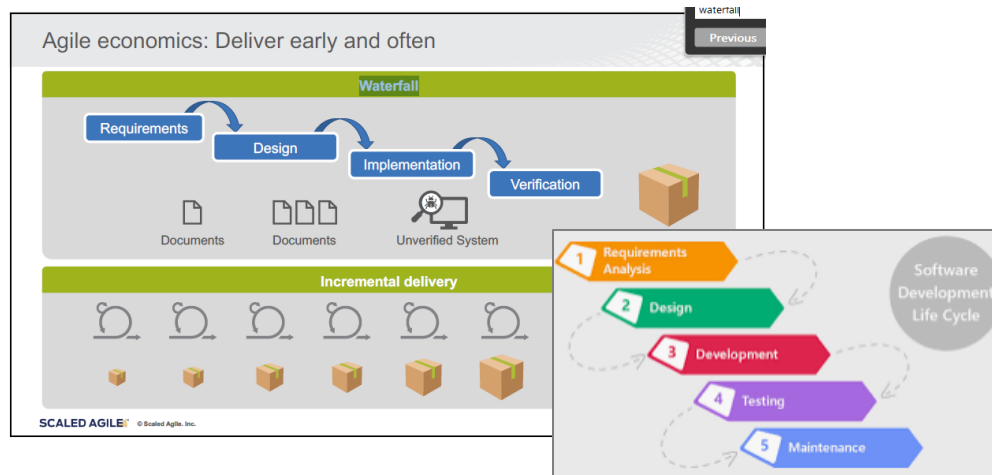


Governance

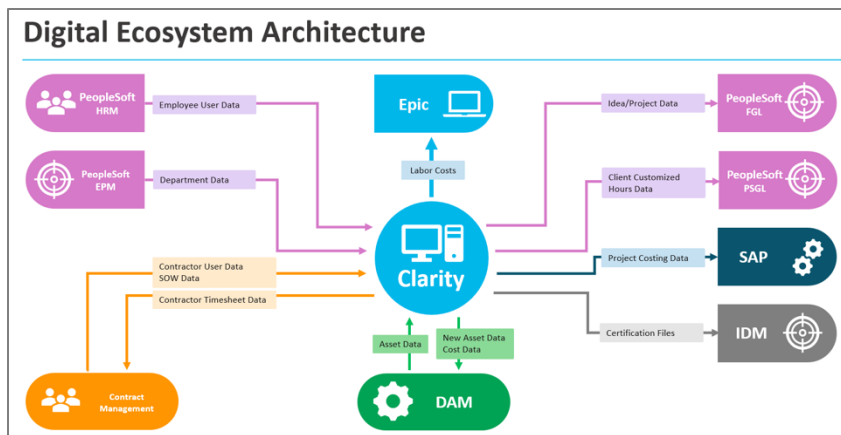
- Clearly defined stewardship over platforms, solution capabilities, performance metrics, and execution
- Definition and compliance oversight of policies and regulatory requirements

Looking outside of the tools!

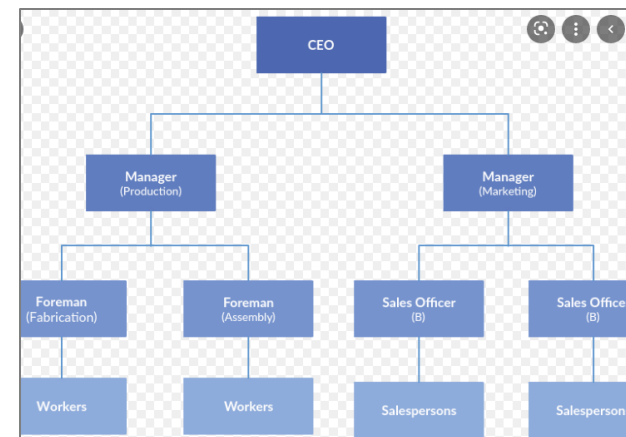
Process and Methodologies



Integrations and data flow



Roles and Org Structure

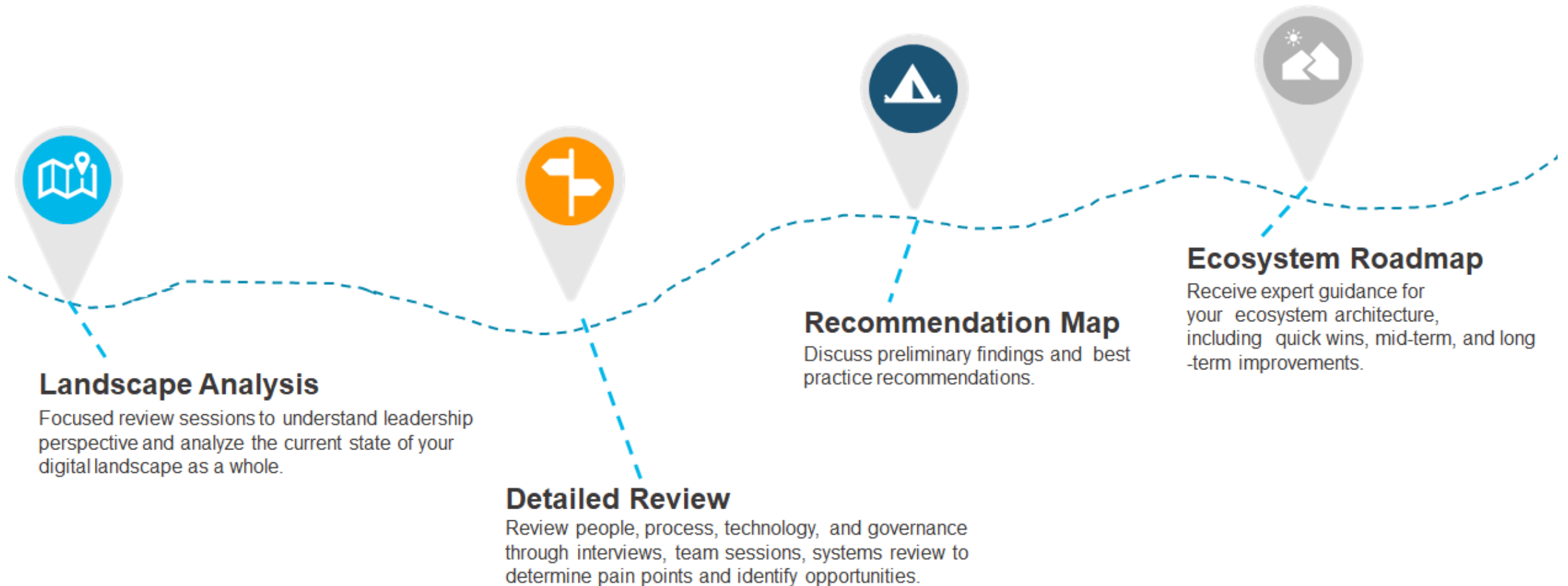


What are the steps?



The Digital Ecosystem Assessment Process

The assessment work will take 4-6 weeks. The work will include the following activities:



Current Industry Themes



Current Themes in the DEA Program

- Intake/Demand Management and Prioritization Practices
- Resource Management, Agile or not: What are people working on?
- Agile Journey, moving forward or stepping back
- Capability Alignment, use the correct tool for the job
- Reporting Strategy, in UI or External BI?
- Simplify Financials, new ways of capitalization

What are the Potential Deliverables or Outcomes?



What are the potential outcomes?

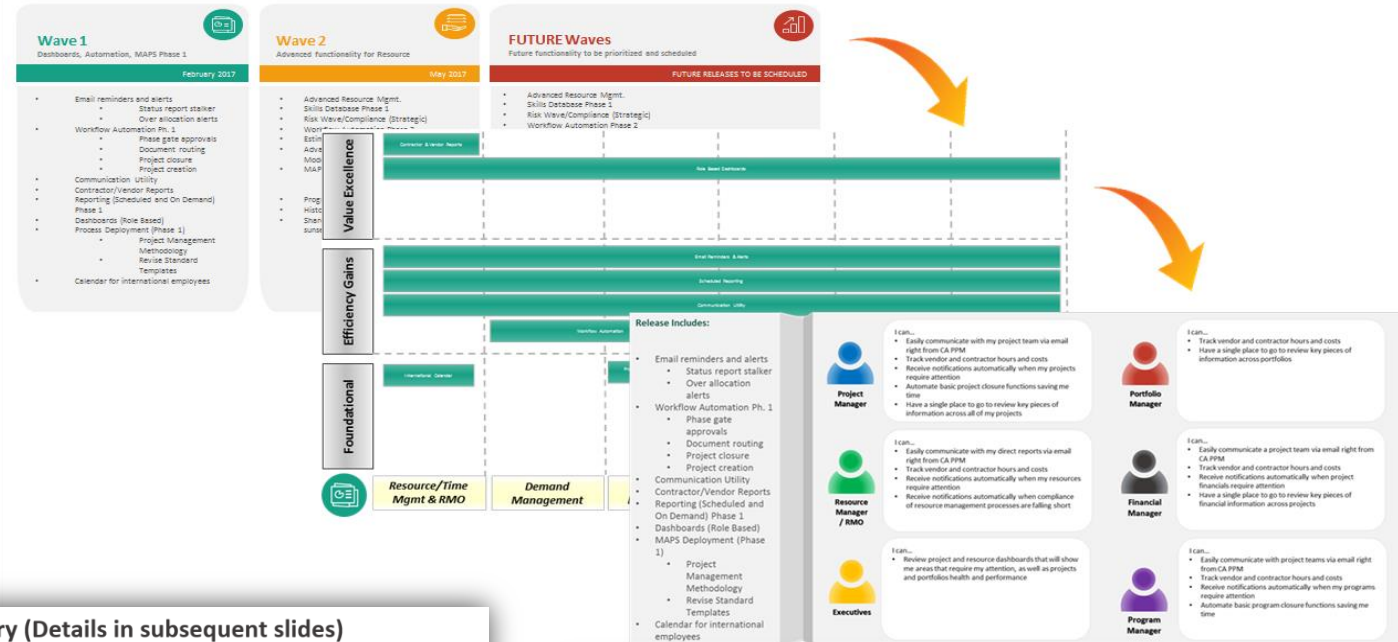
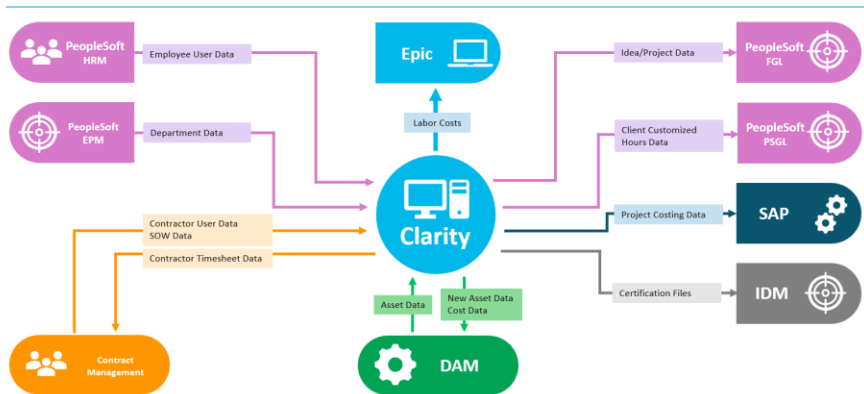
- A Roadmap of Recommendations
- An Architecture of your key systems
- A Value Stream Map
- A Conceptual Integration Diagram



Digital Ecosystem Assessment Results

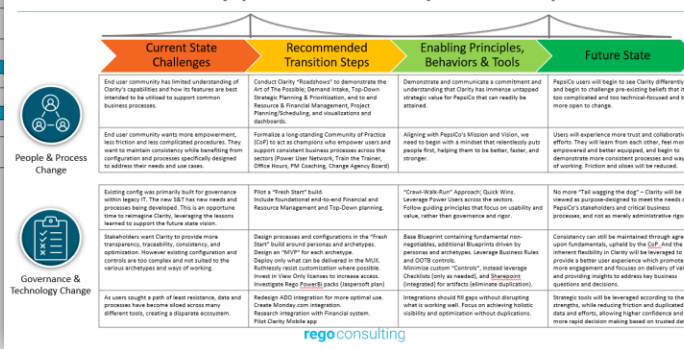
Architecture, Maturity Levels, Process Changes, Collaboration Roadmaps, and more...

Digital Ecosystem Architecture

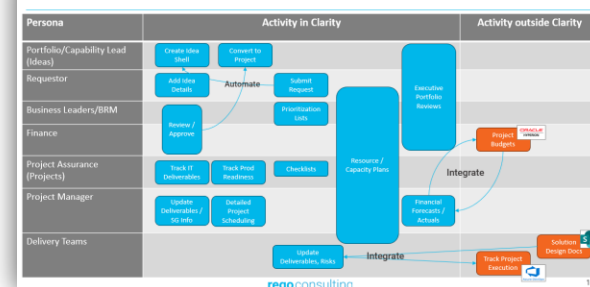


Projects	Impact	Effort	Near-Term 3-6 mo	Mid-Term 6-18 mo	Long-Term 18+ mo
Portfolio Baselines	M	M	→		
Fresh Start Clarity Financials	M	M	→		
Complete View of Time Tracked	H	H	→		
Use Project Level Baselines	M	L	→		
Model Product Funding in Clarity, VSM later	M	M	→		
Use Clarity as the Source of Project Financial Truth	H	H	→		

Executive Summary (Details in subsequent slides)



Possible Future State Flow of Value



Let Rego be your guide.

DEA PPM Focus Areas and Guiding Principles



Image of Success

- Providing greater transparency and visibility increases collaboration and trust
- Optimizing data, process, & administration activities reduces friction and results in an empowered and efficient modern workforce
- Reducing siloes, exceptions, and manual processes ensures a sustainable and scalable digital ecosystem



Change Leadership & Culture

- Any successful change effort must begin with a clearly articulated, pervasive vision (Start with Why)
- While all voices should be heard and respected, resistance to change should not be an acceptable barrier to progress
- Change efforts should follow a pace that minimizes disruption and carries a high likelihood of success (Crawl/Walk/Run)



Taxonomy / Portfolio Structure

- Data schemes and terminologies should either align to a widely-accepted framework, or be obvious and intuitive
- Taxonomies should be derived in a way that is logical and valuable from the Customer's viewpoint (no "tail wagging the dog")
- Build what is required to support the realities of today, with inherent flexibility to support future growth and change



Data and Reporting Strategy

- Trusted, defensible outputs demand that good data hygiene is a nonnegotiable throughout the organization
- Multiple Sanctioned Sources of Truth *may* exist, as long as there is a common understanding of what is the "Gold Standard"
- Siloes are the enemy of collaboration and consistency



Roles, Responsibilities, & Skills

- Roles & Responsibilities should be clearly defined, documented, and understood (e.g., Process RACI matrices)
- Improve the flow of value and empower people by decentralizing decision-making and shifting away from "Command & Control"
- Seek to reduce dependence on "Tribal Knowledge" and success derived through superhuman heroics



Scalability and Sustainability

- Perfection is the enemy of Progress; Strive for right-sized governance and oversight, minimize overengineering
- Automation, optimization, and customization must not create an undesirable amount of technical debt or failure points
- Business processes and methodologies must be able to evolve alongside transformational efforts (e.g., Process before tool)

DEA PPM Guiding Principles Alignment

Image of Success is *foundational to the effort* and impacts of each of the Design Principles, below

DISCLAIMER: These assessments are based on our observations and on stakeholder feedback. There may be undisclosed artifacts, information, or other efforts which we did not observe which could temper some of these recommendations.



Image of Success

Alignment to Principles



Principle Alignment

- No evidence of alignment to Guiding Principles
- Some gaps observed but no major concerns or blockers
- Observed to be fully aligned to Guiding Principles

The degree to which the current implementation aligns with our Principles

Trajectory

- Stay the course; Success is likely
- There are some noted risks which can be mitigated
- Current actions are not likely to deliver desired outcomes

The degree to which previous work/direction will support successful results

Change Leadership & Culture

Alignment to Principles



Taxonomy / Portfolio

Alignment to Principles



Data and Reporting Strategy

Alignment to Principles



Roles, Responsibilities, & Skills

Alignment to Principles



Scalability & Sustainability

Alignment to Principles



Note that 100% alignment is not the objective. Assessment is structured to enable the identification of key considerations.

Assessment Scorecard

Summary / Findings

A high-level summary of the assessment area along with the main observations/findings is provided. Detailed notes and supporting information can be found in the appendix.

Each assessment scorecard slide is followed by additional content focused on accelerating the accomplishment of the strategy

Risks

We have taken an initial cut at identifying the main potential risks for this assessment area. These are not intended to be comprehensive but were the most obvious to our team.

Summary

Text.

Observations & Findings

Risks

- Text

- Text.

Select Work Streams

ID#	Recommendation	Level of Effort
1	Text	Low / Medium / High
2	Text	Low / Medium / High
3	Text	Low / Medium / High

Principle Alignment

0% ● 100%

The degree to which the current implementation aligns with our Principles

Trajectory

The degree to which previous work/direction will support successful results

Image of Success

Alignment to Principles

Alignment

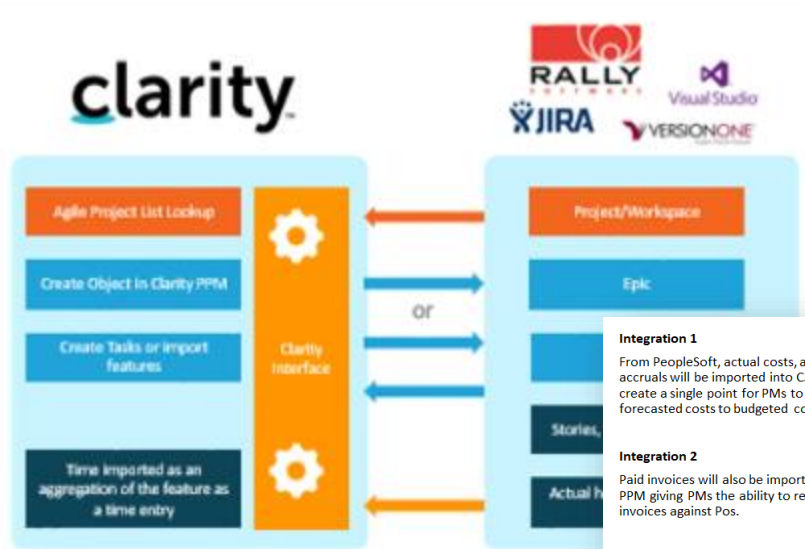
Alignment with our PPM reference model and trajectory moving forward.

Select Work Streams

The recommended Select Work Streams are a list of key work activities to consider and do not represent a sequential relationship. We have included a high-level assessment of the potential impact and the anticipated effort required.

regoUniversity2024

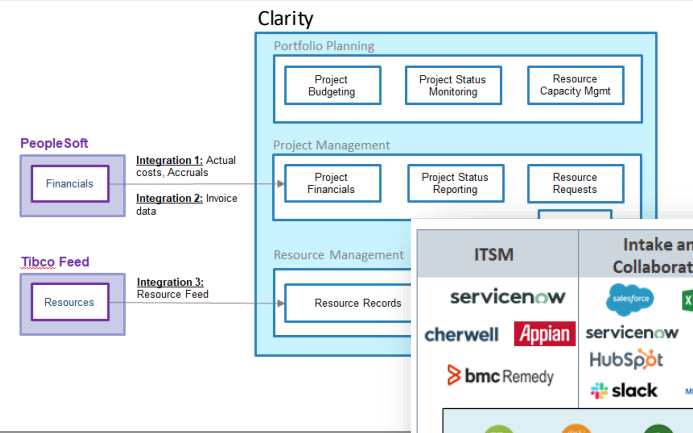
Integration Diagrams



Integration 1
From PeopleSoft, actual costs, as well as accruals will be imported into CA PPM to create a single point for PMs to compare forecasted costs to budgeted costs.

Integration 2
Paid invoices will also be imported into CA PPM giving PMs the ability to reconcile invoices against Pos.

Integration 3
Resource records will be systematically maintained through a subscription of the Tibco resource feed.



ITSM	Intake and Collaboration	Applications	Vendor and Time Management	Project and Resource Management
servicenow cherwell bmcRemedy	servicenow HubSpot slack	SharePoint Troux Insight	SAP Fieldglass KRONOS Beeline ADP	Project SharePoint Outlook smartsheet MEISTERPLAN tdesign ARP
regoLink Innovation and integrations for Clarity				
Agile Integrations servicenow JIRA Visual Studio COLLABNET VERSIONONE RALLY Agile Central			HR/Resource/Financial ORACLE servicenow workday Microsoft Azure JDEdwards LAWSOHN PeopleSoft SAP NETSUITE ADP sage APPTIO	
Reporting and Business Intelligence Power BI + a b l e o u Spotfire JASPERSOFT Azure Data lake QlikView				

Best-of-Fit Tools: Rego's Perspective on Alignment

Capability*	Clarity (Best fit for Enterprise SPM)	Azure (Best fit for Agile DevOps)	monday.com (Best fit for isolated work)	ServiceNow (Best fit for automation/ITIL)	Spreadsheets & Custom tools
Demand Intake & Assessment	Ideas (self-service support, View Only licensing)	Manual Configuration	Limited, not enterprise-focused	Manual Configuration	N/A, fully manual
Top-Down Investment Planning & Work Hierarchy	Industry-leading SPM/VSM Investment Planning	Limited	Limited, not enterprise-focused	Extremely limited (PPM Module), manual/custom	N/A
Top-Down or Bottom-Up Financial Planning and Project/Product Financials	Native, robust, built-in functionality	No native ability	Limited, not enterprise-focused	Extremely limited, manual	N/A, fully manual
Traditional Project Management (Schedules, Risk, Issues, Status)	Native, robust, built-in functionality	No native ability	Native, highly configurable, limited native advanced PM capabilities	Native (PPM Module), requires heavy customization	N/A, fully manual
Resource Capacity & Allocation Management	Native, robust, built-in functionality	No native ability	Limited, not enterprise-focused	Native (PPM Module), requires heavy customization	N/A, fully manual
Roadmaps (Portfolio, Product, Solution) & Scenario Planning	Native, robust, built-in functionality	Ability to show timelines for Epics and features	Some native; mainly Gantt focused	Some capabilities (PPM Module), manual	N/A
Collaboratively plan, automate, track, and visualize work tasks and deliverables	Native, traditional schedules, Gantt, Boards, Datasheets, Checklists and To Do items. Native social collaboration.	Native, built-in functionality using Boards	Native, good for high-level collaboration	Native	N/A
Executive level insights and dashboards (Enterprise/Portfolio)	Flexible, user-configurable dashboards, widgets, & canvasses. DWH & BI support	Native, built-in functionality (Agile/Sprint focused)	Native, built-in functionality	Very limited, manual	N/A, fully manual
PI/Sprint Planning & User Story / Epic Delivery	Possible through custom configuration	Native, built-in functionality	N/A	Custom configuration	N/A

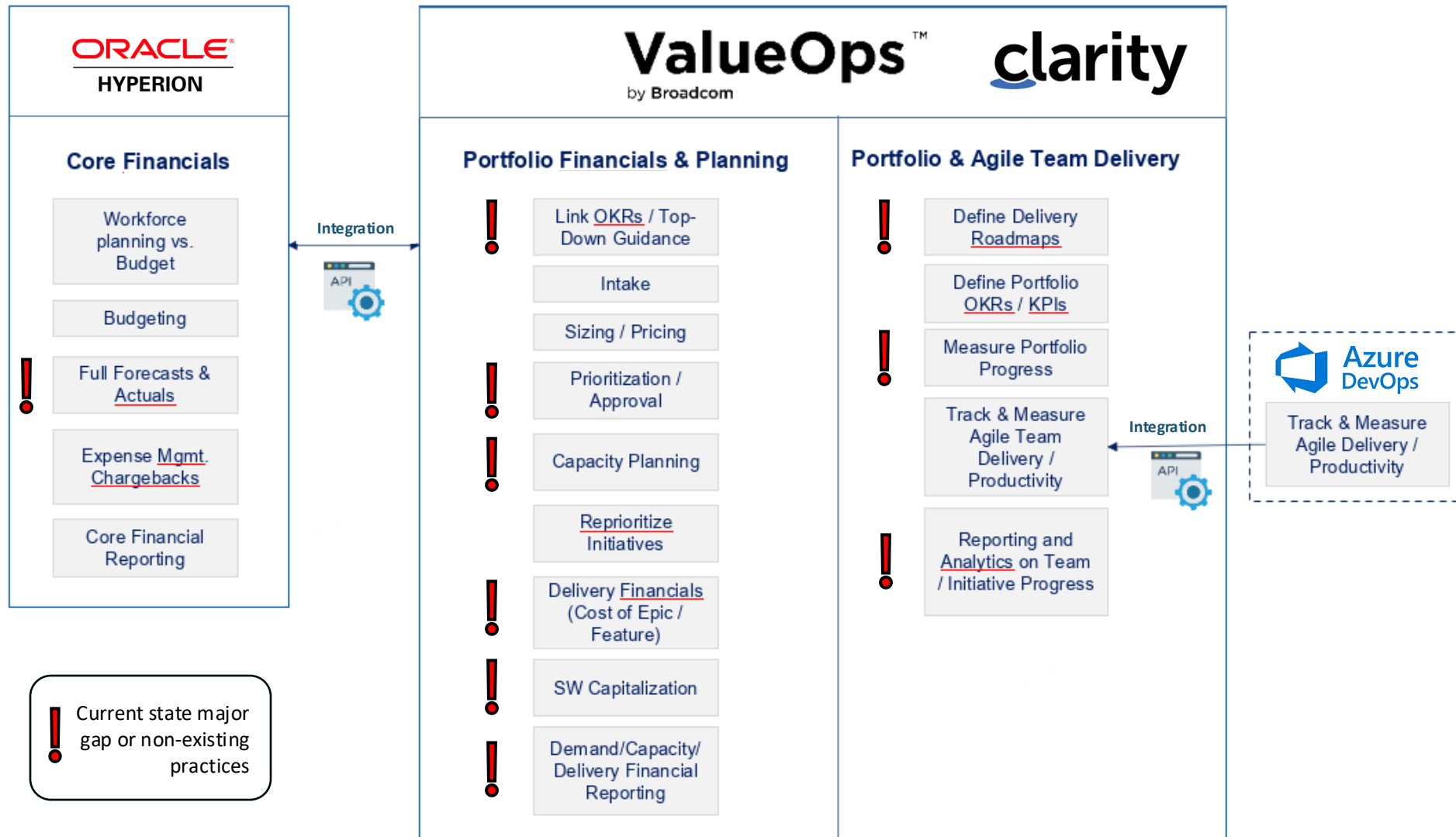
Not Inherent
 Poor Fit / Manual
 Some/Limited Ability
 Ideal Fit
 Current Use Case

* Total solution capabilities go beyond what is displayed here

rego consulting

regoUniversity2024

Clarity as a Strategic Bridge in Hybrid/Product Portfolios



Solution Capability Stack (Recommended Approach)

clarity

Top-Down Investment Planning

Demand Intake and Approval

Estimation of Costs & Resources

Resource Capacity Planning

Staff Allocations & Utilization

Project Accounting/Forecasts

Linked Strategy/OKRs to Work

Portfolio Strategic Planning

Product & Solution Roadmaps

Program/Portfolio Health & KPIs

Status Reporting, RAID logs

Executive Dashboards & Insights

 **monday.com**

Adaptive Work Management

Unique or One-Time Work Effort

 **Azure DevOps**

Delivery Roadmaps (Sprint / PI)

Agile Team Planning

Dependency management

Team Backlog sizing

Team Backlog prioritization

Team-level Risks & Issues

Kanban boards

Agile metrics

servicenow

ITIL Work Processes

Workflow Task Automation

Standardized Work Sequencing

IT-Centric, Low-Touch Tasks

Sample #1 – Backlog of Clarity Recommendations



Short Term (0-3 months)

Foundational or Quick Wins

- T1: Improve the User Experience**
- T2: Improve System Performance**
- T5: Shift towards the Modern UX**
- T6: Integrate with Agile**



Mid Term (within the next year)

Sooner than Later

- G1: Re-establish Clarity Steering Committee**
- T4: Investigate a Cloud Migration**
- T8: Revisit the Clarity Security Model**
- T9: Leverage BI Tools to Maximize the Value of Clarity Data**
- T10: Utilize Budgeting within Clarity**



Long Term Goals (beyond next year)

Vision for the Future

- V1: Create an Enterprise Project Management Office (EPMO)**
- C1: Pace Change**
- C2: Develop Strategic Themes**
- C3: Deploy Change Champions**

Assessment Value

- **For the Client**, the DEA will create tactical recommendations and a roadmap to align tools, streamline process and enable people manage project information effectively.
- **For Broadcom and Rego**, the DEA will allow us to gain insight into project practices in detail so we can position offerings for long term engagements. A roadmap of future enhancements, work and growth.

Qualifying Questions?

- Do you have a roadmap for your PPM tool?
- Are you moving toward Agile practices and/or Project to Product?
- Do you have too many tools and/or complex and slow process?
- Would you like an unbiased fresh perspective?
- Would you like an expert to provide tailored best practice guidance for your organization?
- Are you looking for some quick wins and fresh energy to support your PPM ecosystem?
- Does your business need an interconnected roadmap across the entire ecosystem of PPM/Work/Agile tools?
- Do you want to include people and process changes in your roadmap along with tools?

Summary



DEA Summary

- A DEA can show an objective perspective on a Clarity implementation.
- A DEA is a client-first offering that will allow you to discover deep insights into your organization, the users, and use cases.
- A DEA is very partnership focused with the client users and you, the Clarity support/owner team.
- A DEA will unlock additional value in Clarity and improve end user engagement.
- If you want to have your Enterprise SW optimized to work in a balanced ecosystem in support of project delivery, do a DEA!

Questions?





Master Clarity with Rego University

Earn Certifications in Administration, Leadership, and Technical Proficiency

Let Rego be your guide.



Elevate Your Professional Expertise with Rego University Certifications

Rego is excited to introduce our **new certification programs**, designed to enhance your expertise in Clarity administration, leadership, and technical skills. These certifications provide hands-on experience and knowledge to excel in your career.



Certification Requirements:

✓ **Completion:** 12 units per certification track

✓ **Eligibility:** Open to all Rego University attendees



Important Reminder:

To have your certification **credits tracked**, ensure you **complete the class surveys in the app** after each session. This step is critical for certification progress.

Surveys

Please take a few moments to fill out the class survey.
Your feedback is extremely important for future events.



Additional Resources

Additional RegoU Sessions:

[Best Practice Use of Clarity for Intake & Prioritization \(Thursday, 0900\)](#)

[Adoption Roundtable \(Thursday, 0900\)](#)

[Roadmaps Roundtable \(Thursday, 1010\)](#)

[Intake & Prioritization Roundtable \(Thursday, 1120\)](#)

Articles/Webinars:

<https://info.regoconsulting.com/top-ppm-and-work-management-trends-for-2024-december-2023>

<https://info.regoconsulting.com/improve-your-project-management-practices-with-a-digital-ecosystem-assessment-30-august-2023>

<https://www.prosci.com/blog/defining-change-impact>

<https://www.prosci.com/blog/sustainment-in-change-management>

<https://businessleadershiptoday.com/how-does-leadership-affect-organizational-success/>

<https://info.regoconsulting.com/what-is-strategic-portfolio-management-linking-strategy-to-execution>

Books

[Accelerate: Building Strategic Agility for a Faster-Moving World, John P. Kotter](#)

[Out of the Crisis, W. Edwards Deming](#)

[Value Stream Mapping: How to Visualize Work and Align Leadership for Organizational Transformation, Martin/Osterling](#)

[The 4 Disciplines of Execution, McChesney/Covey/Huling](#)

[The Digital Transformation Playbook, David L. Rogers](#)

Personal Growth

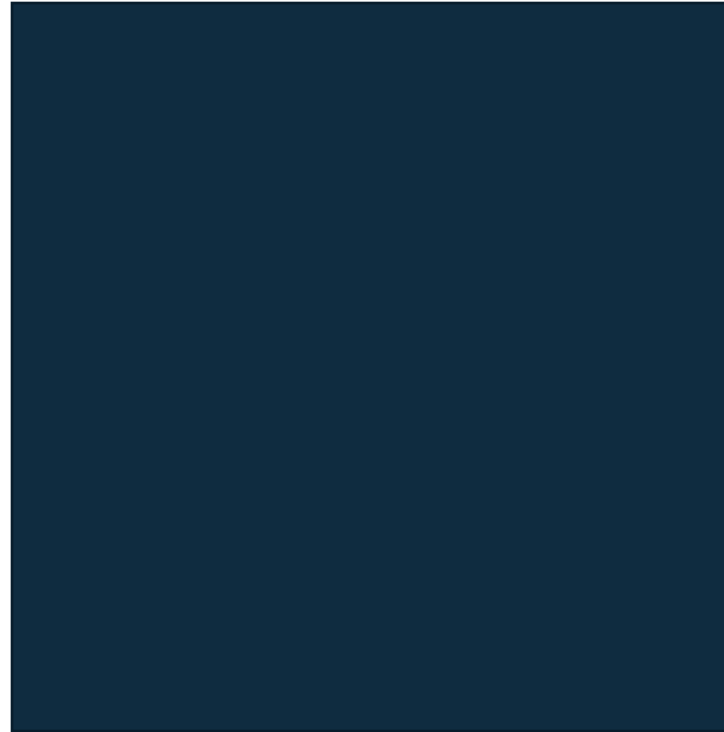
[From Strength to Strength, Arthur C. Brooks](#)

[Designing Your Life, Bill Burnett and Dave Evans](#)

[The Six Types of Working Genius, Patrick Lencioni](#)

Surveys

Please take a few moments to fill out the class survey.
Your feedback is extremely important for future events.





Jacob Cancelliere, PMP

VP of Account Enablement
Rego Consulting



Let's Connect on LinkedIn

Thank you!

Let's continue the conversation! Connect with me on LinkedIn!



regoUniversity
KANSAS CITY • 2024

Thank You For Attending Rego University

Instructions for PMI credits

- Access your account at pmi.org
- Click on **Certifications**
- Click on **Maintain My Certification**
- Click on **Visit CCR's** button under the **Report PDU's**
- Click on **Report PDU's**
- Click on **Course or Training**
- Class Provider = **Rego Consulting**
- Class Name = **regoUniversity**
- Course **Description**
- Date Started = **Today's Date**
- Date Completed = **Today's Date**
- Hours Completed = **1 PDU per hour of class time**
- Training classes = **Technical**
- Click on **I agree** and **Submit**



Let us know how we can improve!
Don't forget to fill out the class survey.



Phone

888.813.0444



Email

info@regoconsulting.com



Website

www.regouniversity.com