

Platinum Sponsor

ValueOps
by Broadcom

Rally **Clarity**
by Broadcom by Broadcom



regoUniversity

SAN DIEGO • 2023

Digital Ecosystem Assessment Overview

Your Guides:

Jacob Cancelliere and Wes McCoubrie

Agenda

- What is a Digital Ecosystem Assessment (DEA)?
- What are the steps?
- What are the potential deliverables or outcomes?
- Summary

Open Mic

- Do you have a published architecture for PPM/Agile tools?
- Do you have a enhancement Roadmap/Backlog for your PPM/Agile tools?
- Have you included People and Process in those Roadmaps/Backlog?

What is a Digital Ecosystem Assessment?

Stop, Collaborate and Listen

- Reflect on current state
- Listen to large coverage of stakeholders
 - Up as high as C level
 - Talk to Team Members
 - Every Persona in between



Looking Across Tools/Technology

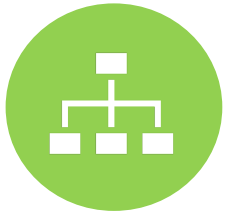
The goal of an Ecosystem Assessment is to look across data, technology, and platforms to reveal efficiencies, value, and a more balance Digital Ecosystem.



An Interconnected Ecosystem is **Essential** to Drive Digital Transformation.

Assessment Overview

A holistic assessment that evaluates the current state of your project management practices across the following 4 key pillars to compare against industry best practice. Rego will then develop recommendations for a future state.



People

- Well defined roles and responsibilities for optimal execution
- Alignment of location and skills to right roles to execute capabilities



Process

- Streamlined and standardized execution processes
- Standardized key decision points, handoffs, and interdependencies



Technology

- Aligned technologies that enable planning, execution, and measurement
- Ensure data interoperability across all platforms

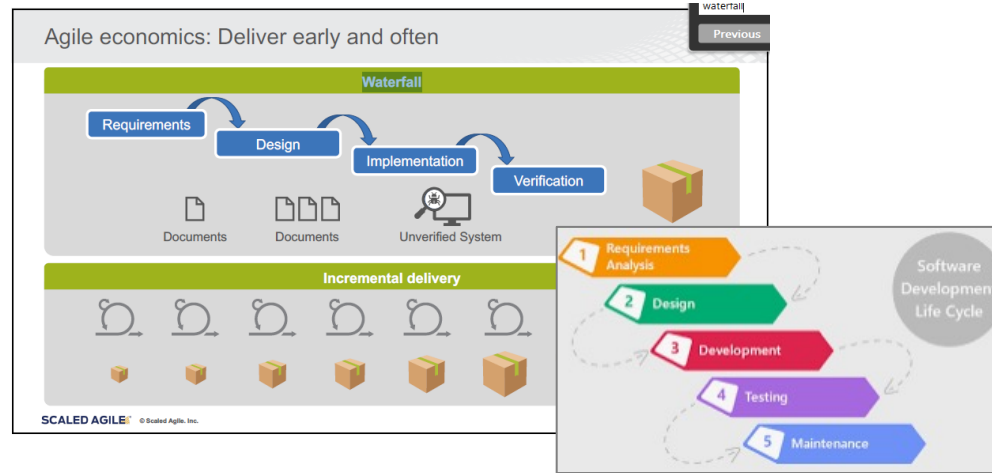


Governance

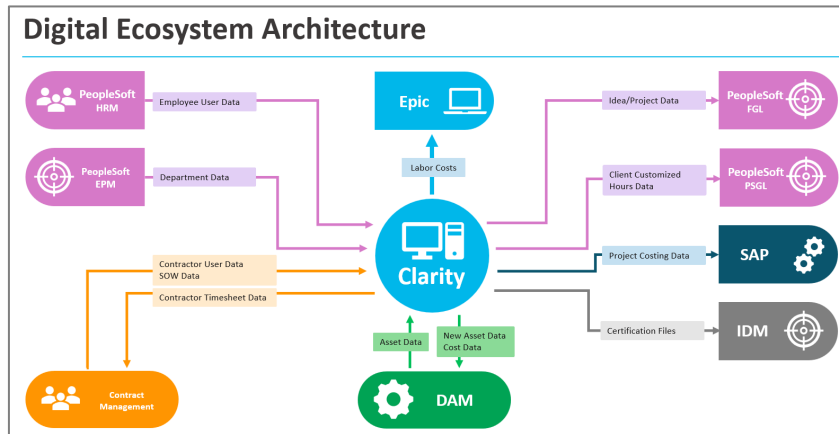
- Clearly defined stewardship over platforms, solution capabilities, performance metrics, and execution
- Definition and compliance oversight of policies and regulatory requirements

Looking outside of the tools!

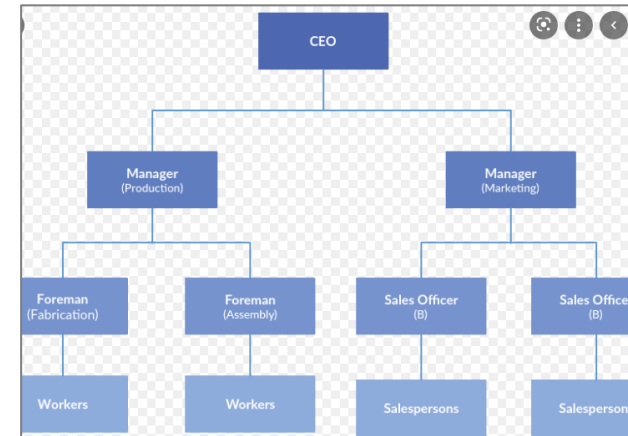
Process and Methodologies



Integrations and data flow



Roles and Org Structure



What are the steps?

The Digital Ecosystem Assessment Process

The assessment work will take 4-6 weeks. The work will include the following activities:



Current Themes

- Agile Journey, moving forward or stepping back
- Move to SaaS, Just Do It
- Capability Alignment, use the correct tool for the job
- Reporting Strategy, In UI or External BI?
- Simplify Financials, new ways of capitalization

What are the potential Deliverables or Outcomes?

What are the potential outcomes?

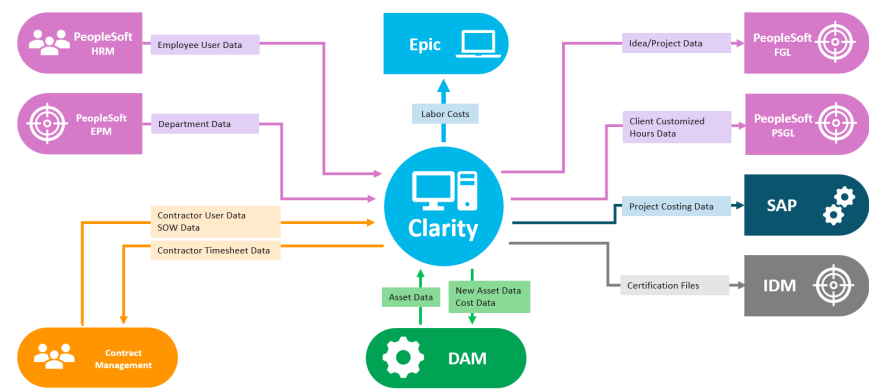
- A Roadmap of Recommendations
- An Architecture of your key systems
- A Value Stream Map
- A Conceptual Integration Diagram



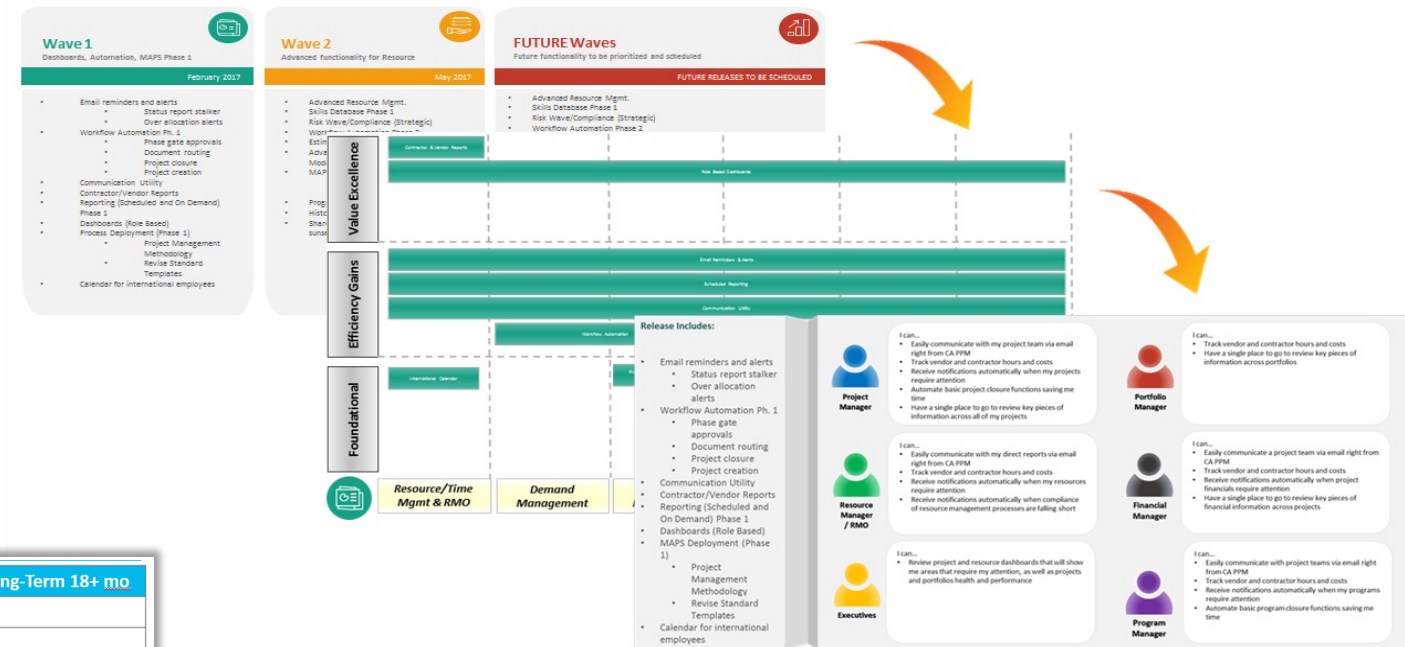
Digital Ecosystem Assessment Results

Architecture, Maturity Levels, Process Changes, Collaboration Roadmaps, and more....

Digital Ecosystem Architecture

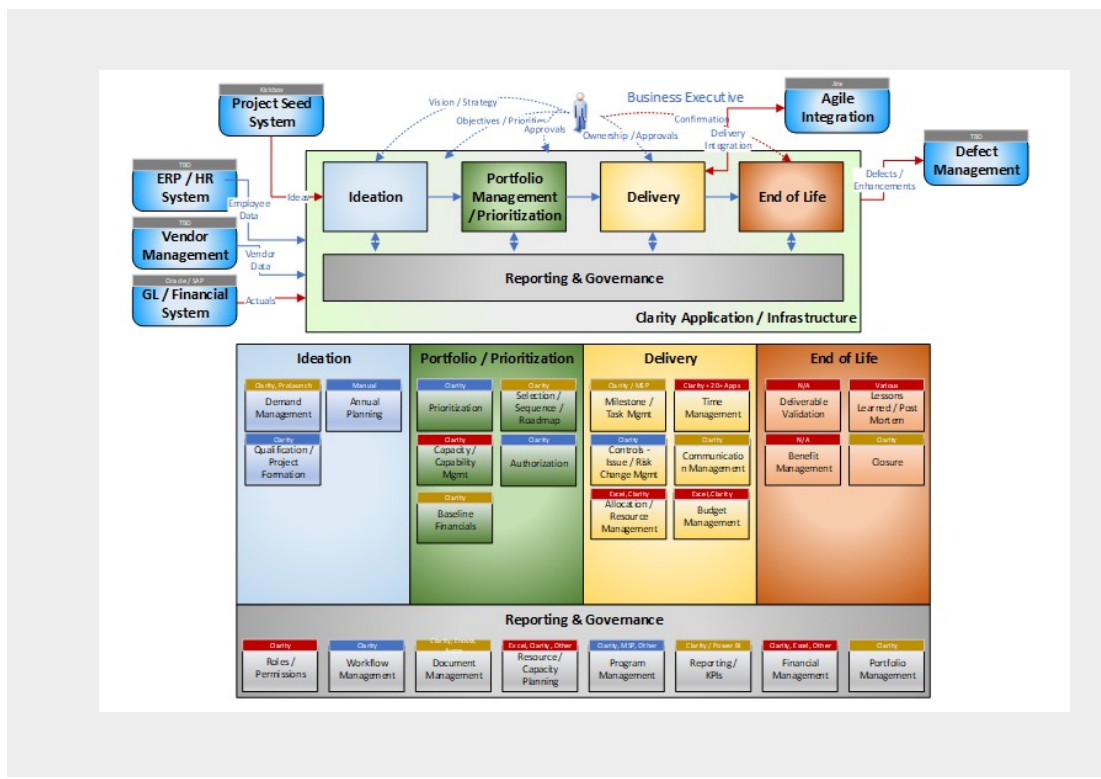
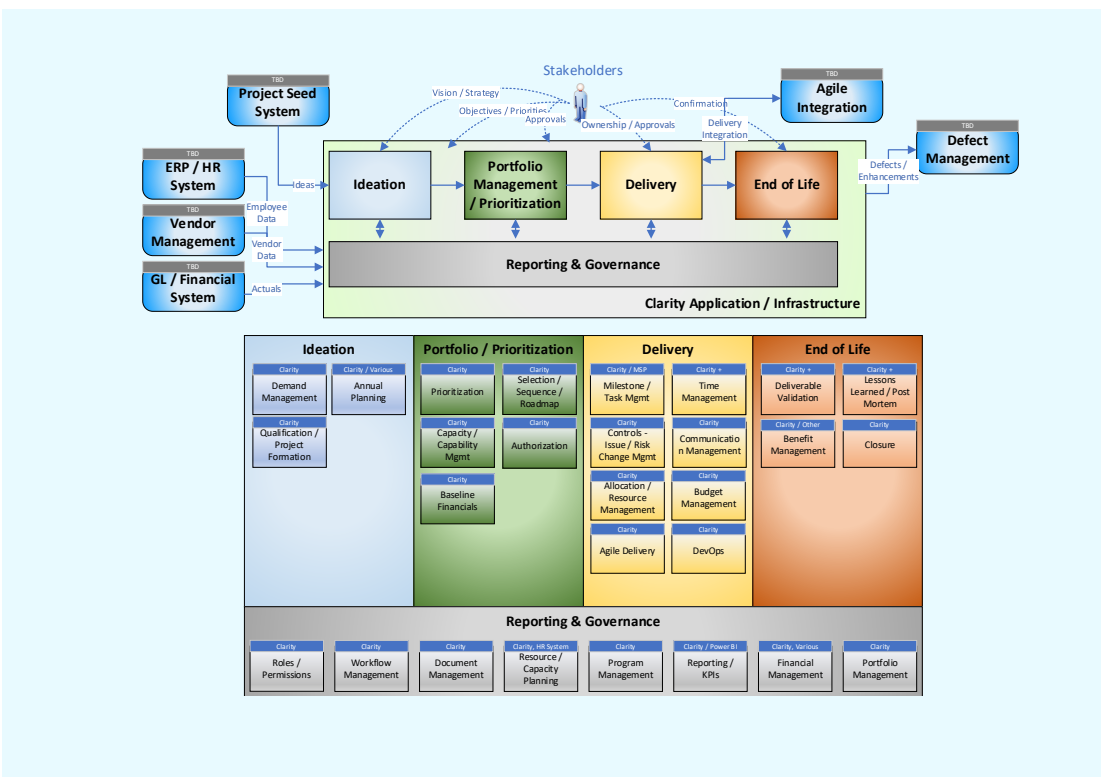


Projects	Impact	Effort	Near-Term 3-6 mo	Mid-Term 6-18 mo	Long-Term 18+ mo
Portfolio Baselines	M	M	→		
Fresh Start Clarity Financials	M	M	→		
Complete View of Time Tracked	H	H	→		
Use Project Level Baselines	M	L	→		
Model Product Funding in Clarity, VSM later	M	M		→	
Use Clarity as the Source of Project Financial Truth	H	H		→	



Capability Assessment

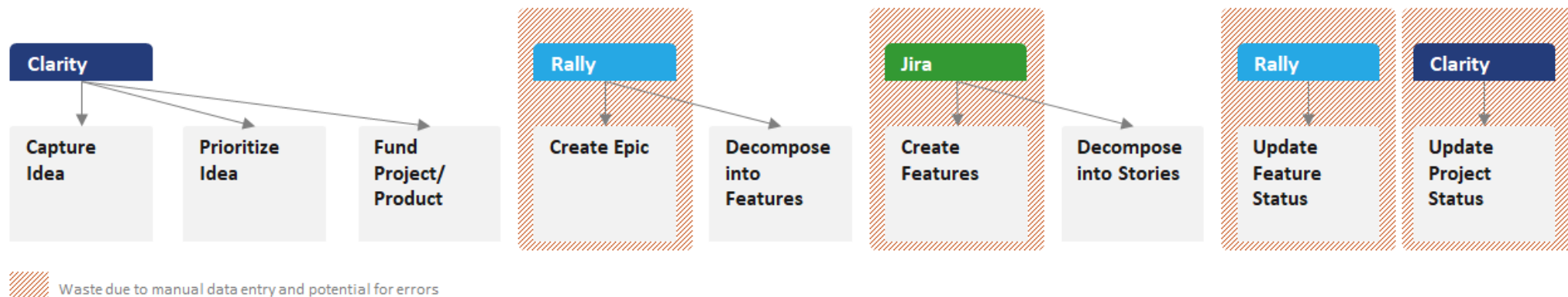
Best Practice Framework Compared to Current State



Value Stream Map

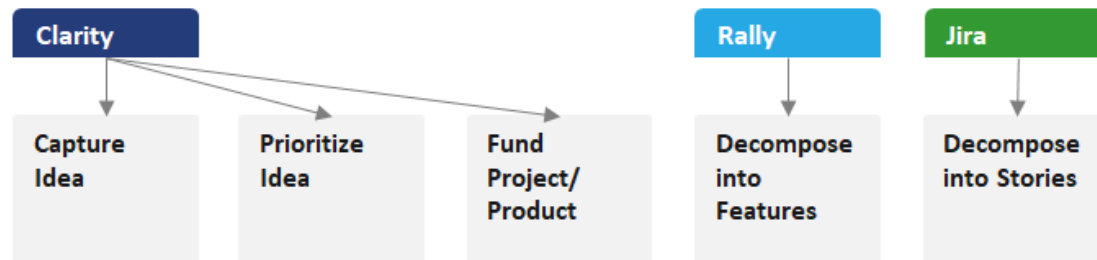
BEFORE: Partial view of Idea moving through development activities

Requires Product Managers to maintain 2 different systems manually by monitoring progress in Jira. This method is error prone and often leads to either additional effort on the part of the PM to maintain systems or when not maintained results in stale data.

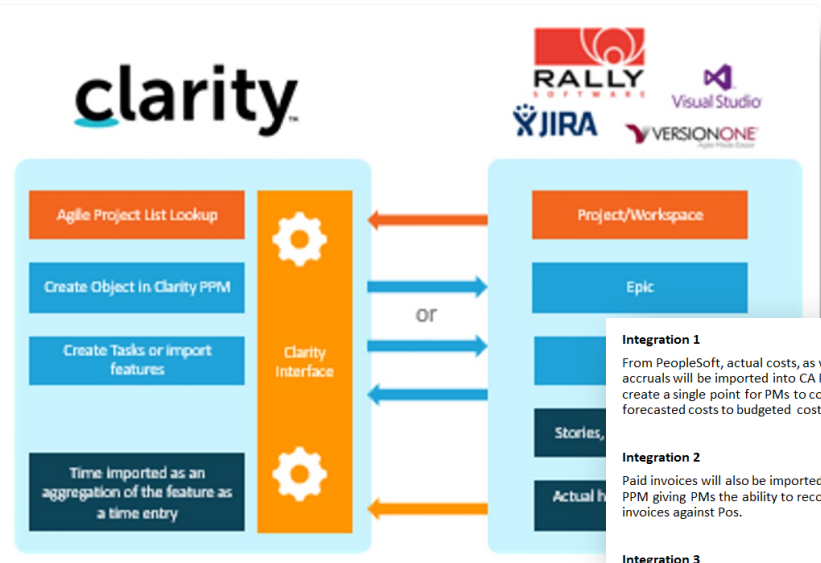


AFTER: Partial view of Idea moving through development activities

Integrating the 3 systems allows data to stay in sync without requiring manual data entry. Product Managers are freed to focus time on PM activities, and Teams automatically have Features created for them in Jira.



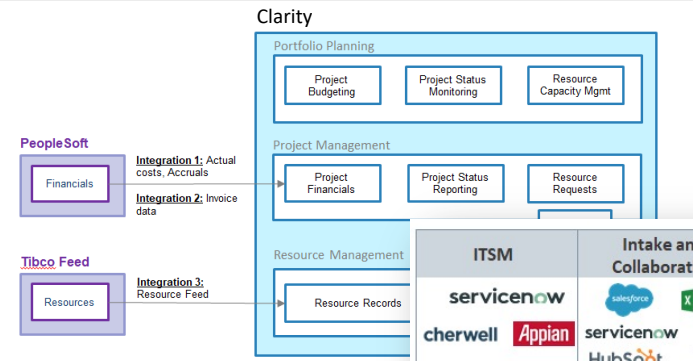
Integration Diagrams



Integration 1
From PeopleSoft, actual costs, as well as accruals will be imported into CA PPM to create a single point for PMs to compare forecasted costs to budgeted costs.

Integration 2
Paid invoices will also be imported into CA PPM giving PMs the ability to reconcile invoices against Pos.

Integration 3
Resource records will be systematically maintained through a subscription of the Tibco resource feed.



ITSM	Intake and Collaboration	Applications	Vendor and Time Management	Project and Resource Management
servicenow cherwell bmc Remedy	Salesforce Microsoft Teams HubSpot slack Microsoft Flow	SharePoint Troux Insight	SAP Fieldglass Beeline KRONOS ADP	Project SharePoint Outlook smartsheet MEISTERPLAN Itdesign ARP
regoLink Innovation and integrations for Clarity				
Agile Integrations servicenow JIRA Visual Studio COLLABNET VERSIONONE RALLY Agile Central			HR/Resource/Financial ORACLE JDEdwards NETSUITE servicenow LAWSOHN ADP workday PeopleSoft sage Microsoft Azure SAP APPTIO	
Reporting and Business Intelligence Power BI JASPERSOFT + a b l e o u Azure Data lake Spotfire QlikView				

Sample #1 – Backlog of Clarity Recommendations



Short Term (0-3 months)

Foundational or Quick Wins

- T1: Improve the User Experience**
- T2: Improve System Performance**
- T5: Shift towards the Modern UX**
- T6: Integrate with Agile**



Mid Term (within the next year)

Sooner than Later

- G1: Re-establish Clarity Steering Committee**
- T4: Investigate a Cloud Migration**
- T8: Revisit the Clarity Security Model**
- T9: Leverage BI Tools to Maximize the Value of Clarity Data**
- T10: Utilize Budgeting within Clarity**



Long Term Goals (beyond next year)

Vision for the Future

- V1: Create an Enterprise Project Management Office (EPMO)**
- C1: Pace Change**
- C2: Develop Strategic Themes**
- C3: Deploy Change Champions**

Assessment Value

- **For the Client**, the DEA will create tactical recommendations and roadmap to align tools, streamline process and enable people manage project information effectively.
- **For Broadcom and Rego**, the DEA will allow us to gain insight into project practices in detail so we can position offerings for long term engagements. A roadmap of future enhancements, work and growth.

Qualifying Questions?

- Do you have a roadmap for your PPM tool?
- Are you moving toward Agile practices and/or Project to Product?
- Do you have too many tools and/or complex and slow process?
- Would you like an unbiased fresh perspective?
- Would you like an expert to provide tailored best practice guidance for your organization?
- Are you looking for some quick wins and fresh energy to support your PPM ecosystem?
- Does your business need an interconnected roadmap across the entire ecosystem of PPM/Work/Agile tools?
- Do you want to include people and process changes in your roadmap along with tools?

Summary

DEA Summary

- A DEA can show an objective perspective on a Clarity implementation
- A DEA is a client-first offering that will allow you to discover deep into your organization and the users and use cases
- A DEA is very partnership focused with the client users and you, the Clarity support/owner team
- A DEA will unlock additional value in Clarity and improve end user engagement
- If you want to have your Enterprise SW optimized to work in a balanced ecosystem in support of project delivery, do a DEA!

Questions?



Thank You For Attending Rego University

Instructions for PMI credits

- Access your account at pmi.org
- Click on **Certifications**
- Click on **Maintain My Certification**
- Click on **Visit CCR's** button under the **Report PDU's**
- Click on **Report PDU's**
- Click on **Course or Training**
- Class Provider = **Rego Consulting**
- Class Name = **regoUniversity**
- Course **Description**
- Date Started = **Today's Date**
- Date Completed = **Today's Date**
- Hours Completed = **1 PDU per hour of class time**
- Training classes = **Technical**
- Click on **I agree** and **Submit**



Let us know how we can improve!
Don't forget to fill out the class survey.



Phone

888.813.0444



Email

info@regoconsulting.com



Website

www.regouniversity.com

Surveys

Please take a few moments to fill out the class survey.
Your feedback is extremely important for future events.





Jacob Cancelliere, PMP

VP of Account Enablement
Rego Consulting



Let's Connect on LinkedIn

Thank you!

Let's continue the conversation! Connect with me on LinkedIn!