



regoUniversity

NASHVILLE • 2022

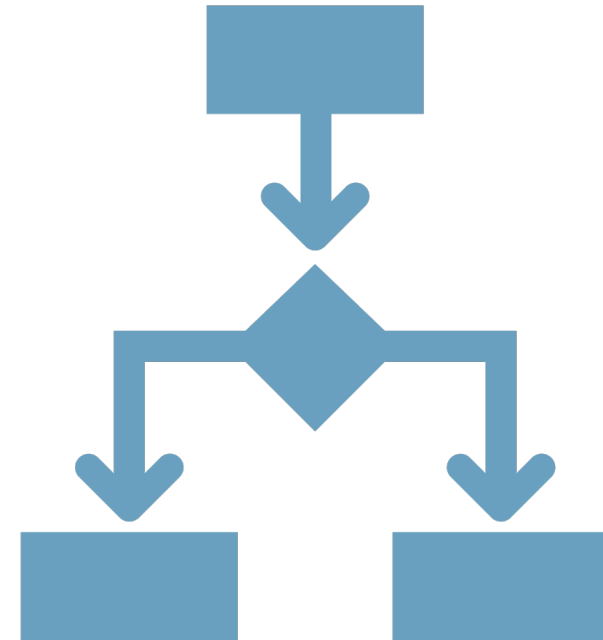
Establishing Work Hierarchies

Your Guides:

Alyson Poston and Mike Pokorny

Agenda

- Introduction
- General Value of a Hierarchy
- When to use the Hierarchy in Clarity –
 - Best practices
- Live Demo
- Use Cases
- Questions



Introductions

- Take 5 Minutes
- Turn to a Person Near You
- Introduce Yourself
- Business Cards

What is a Hierarchy?

In the Oxford Dictionary – it's the system by which you organize people into different ranks of importance –

In Clarity? - the product is far more democratic! It is a means to organize investments to provide insights and help drive effective planning



Some Best Practices for the Hierarchy

- Aligning investments to Strategies, Portfolios, Leaders, or Other constructs
- Align features/epics/requirements to Products for visibility
- When you want/need a financial role up of investments –
- Giving Visibility without necessarily giving access

Demo- how to set up and use

Let Rego be your guide.



Questions?



Thank You For Attending regoUniversity

Instructions for PMI credits

- Access your account at pmi.org
- Click on **Certifications**
- Click on **Maintain My Certification**
- Click on **Visit CCR's** button under the **Report PDU's**
- Click on **Report PDU's**
- Click on **Course or Training**
- Class Provider = **Rego Consulting**
- Class Name = **regoUniversity**
- Course **Description**
- Date Started = **Today's Date**
- Date Completed = **Today's Date**
- Hours Completed = **1 PDU per hour of class time**
- Training classes = **Technical**
- Click on **I agree** and **Submit**



Let us know how we can improve!
Don't forget to fill out the class survey.



Phone

888.813.0444



Email

info@regoconsulting.com



Website

www.regouniversity.com