



regoUniversity

NASHVILLE • 2022

Best New ApptioOne Features of 2022 - Deep Dive

Your Guides:
Mitch Miller & Eric Chan

Part I: Introduction

<Descriptor>



Introductions

- Take 5 Minutes
- Turn to a Person Near You
- Introduce Yourself
- Business Cards

Agenda

- Where to find New releases
- Apptio BI
 - Exposed Calculated Metrics
- Apptio One
 - Refresh
 - Multi-select Slicer
 - Remove Excel Export
 - Manage Branches
 - Custom Calendars
 - Ignore Insignificant Weights
 - Table Upload Late Email Notification
 - File upload
- Editable Tables
 - Table matches work
 - Copy and Paste multiple Rows
 - Delete uploaded tables
 - Control Publish
 - Multiple publishes a day
- Q&A



Where to find Apptio Updates?

- Apptio Always posts all their release notes in their Apptio Help Center
- https://help.apptio.com/en-us/studio/release_notes/whats-new-2021.htm
- Make sure you know what version you and your products are on
- Content and System Upgrades

Quick Poll

- What's the best new feature (released in the past year) that you're taking advantage of?
- How has it helped?



Where to find Apptio Updates?

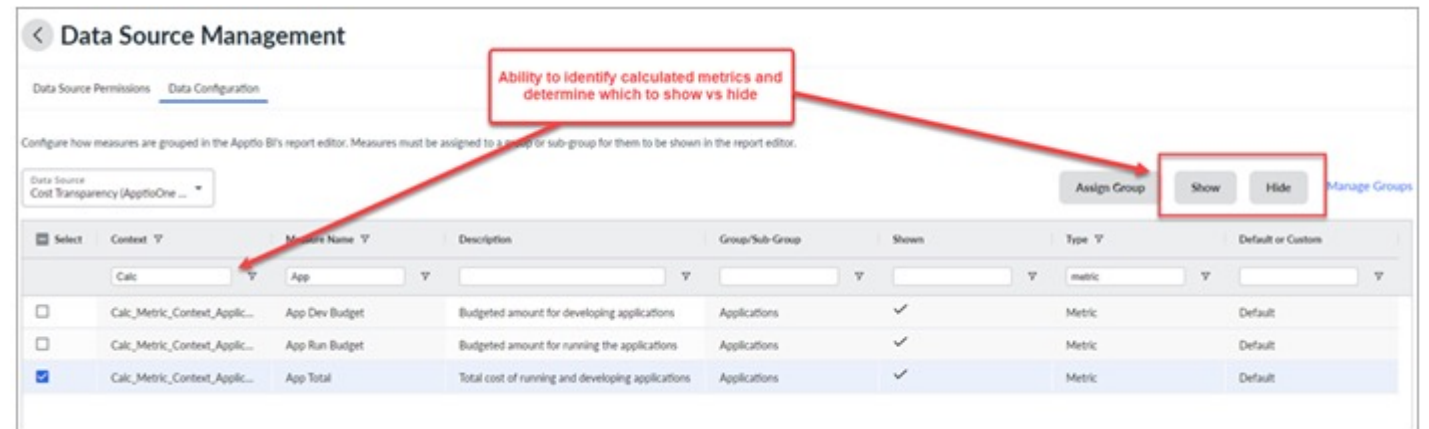
- Has anyone used any of these new features?
- Has anyone used these for a unique used case?
- Has anyone not used these new features for a reason?

Part 2: Apptio BI



Apptio BI

- Exposed Calculated metrics
 - Out-of-the-box (OOTB) and customer calculated metrics from the Cost Transparency projection are now available in Apptio BI. Custom calculated metrics are managed in Data Source Management where they need to be assigned to a group to be visible in the Apptio BI Visualization editor.
- Released 1.11.0 April 29, 2022



Apptio BI

Projection	Group	Calculated Metric	Description
Cost Transparency	Financials	Budget Variance	Difference \$ between actual and budgeted amounts
Cost Transparency	Financials	CapEx Budget Variance	The difference between actual and budgeted capital expenditures
Cost Transparency	Financials	Total Spend	Total \$ amount spent including CapEx and OpEx
Cost Transparency	Fixed Assets	Fixed Asset IsStartMonth	A metric used to filter over aggregate time periods to determine if an asset's initial service date is within the time period
Cost Transparency	Vendor	Vendor Count	Number of vendors
Cost Transparency	Labor	Planned Headcount	Total number of employees planned
Cost Transparency	Application	App Dev Budget	Budgeted amount for developing applications
Cost Transparency	Application	App Run Budget	Budgeted amount for running the applications
Cost Transparency	Application	App Total	Total cost of running and developing applications
Cost Transparency	Storage	Storage Available Cost	The amount of money spent providing storage that is not being used
Cost Transparency	Storage	Storage Average Cost	The cost per storage
Cost Transparency	Storage	Storage Average Cost per GB	The cost per GB of storage
Cost Transparency	Storage	Storage Devices Count	The quantity of storage devices
Cost Transparency	Storage	Storage Tier	Designates the level of the storage, such as for a level of service. Apptio Required values include: Tier 1, Tier 2, Tier 3, Tier 4
Cost Transparency	Storage	Storage Usable Capacity	The number of Gigabytes of usable space on this device - as opposed to the raw (unformatted) space.

Where to find Apptio Updates?

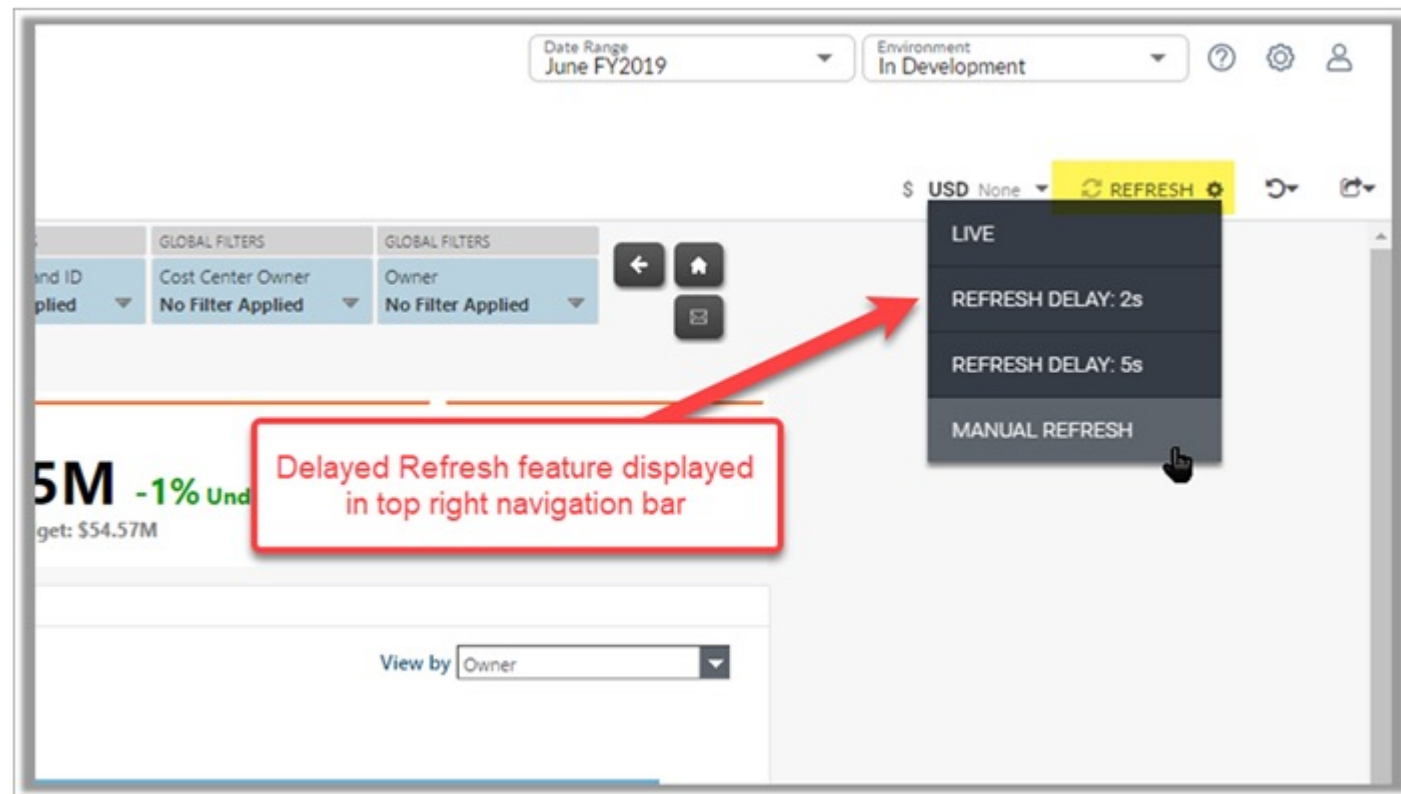
- Has anyone used any of these new features?
- Has anyone used these for a unique used case?
- Has anyone not used these new features for a reason?

Part 4: Apptio One

Apptio One

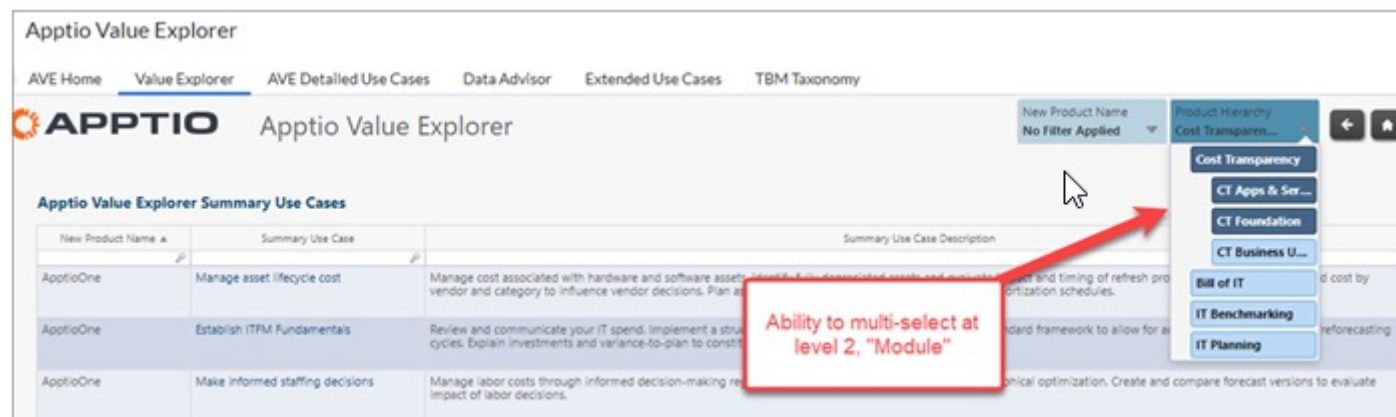
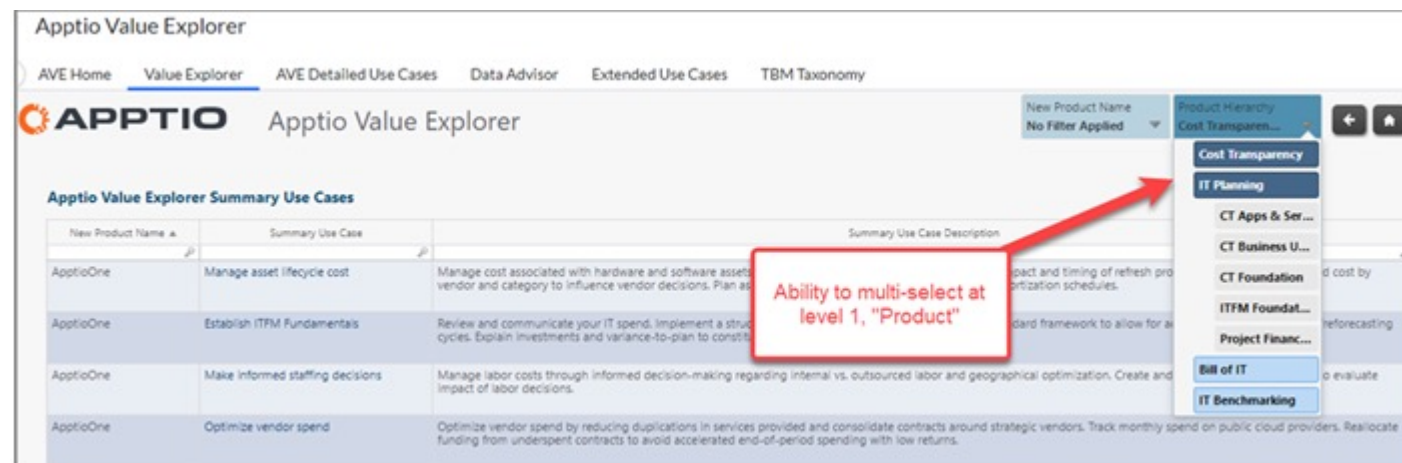
- Delay Refresh

- Changes to interactive components on reports currently respond in real-time. For example, when a user selects a value on a slicer, the filter is immediately applied. Users can now control the response behavior through a new feature.
- This allows users to select all filters and slicers before Apptio Recalculates. This is a massive benefit to users with a lot of data in Apptio.
- Released 1.12.0 July 8, 2022



Apptio One

- Multi-select values in Hierarchical Slicers
 - Hierarchical slicers have been enhanced to enable users to multi-select values at different layers. Previously, users could only multi-select at the lowest layer.
 - Users cannot select multiple values across different layers at the same time.
 - Released 1.11.0 April 29, 2022



Apptio One

- Remove Excel Export
 - A new option, “Report Level Excel Export” has been added to Enable Features to allow administrators to control whether the Excel Export feature is available at the report level. This avoids the issue where end users unknowingly export all the tables in a report when they only wanted one.
 - Individual tables can be exported using <Right><Click> to expose a pop-up menu.
 - Released 1.11.0 April 29, 2022



Apptio One

• Manage Branches

- Can now have more than 5 branches open
- Can now classify branches into 3 types
 - Regular – For Merge purposes
 - Snapshot – Capture point and time, cant merge, no check outs
 - What-If – Experimentation, cant merge, can check out/in
- Now have 5 active branches and “numerous” archived
- Released 1.11.0 April 29, 2022

Manage Branches

Active Branches - 5/5

Name	Type	Created By	Created Date	Modified By	Modified Date	Move	Check Out
Dev Branch 1	REGULAR	ehayman@apptio.com	Apr 13 2022 18:15	-	-	✖	✖
Dev Branch 2	REGULAR	ehayman@apptio.com	Apr 13 2022 18:16	-	-	✖	✖
Scenario 3	WHATIF	ehayman@apptio.com	Apr 13 2022 18:21	-	-	✖	✖
Snapshot 31 Jan 2022	SNAPSHOT	ehayman@apptio.com	Apr 13 2022 18:17	ehayman@apptio.com	Apr 14 2022 13:02	✖	✖
Snapshot 31 Mar 2022	SNAPSHOT	ehayman@apptio.com	Apr 13 2022 18:18	-	-	✖	✖

Archived Branches

Filter: Regular Snapshot What If

Name	Type	Created By	Created Date	Modified By	Modified Date	Move	Check Out
Scenario 1	WHATIF	ehayman@apptio.com	Apr 13 2022 18:20	ehayman@apptio.com	Apr 13 2022 18:21	✔	✖
Scenario 2	WHATIF	ehayman@apptio.com	Apr 13 2022 18:20	ehayman@apptio.com	Apr 13 2022 18:21	✔	✖
Scenario 4	WHATIF	ehayman@apptio.com	Apr 13 2022 18:22	ehayman@apptio.com	Apr 14 2022 07:57	✔	✖
Snapshot 28 Feb 2022	SNAPSHOT	ehayman@apptio.com	Apr 13 2022 18:18	ehayman@apptio.com	Apr 13 2022 18:19	✔	✖

Move branches between Active and Archived sections



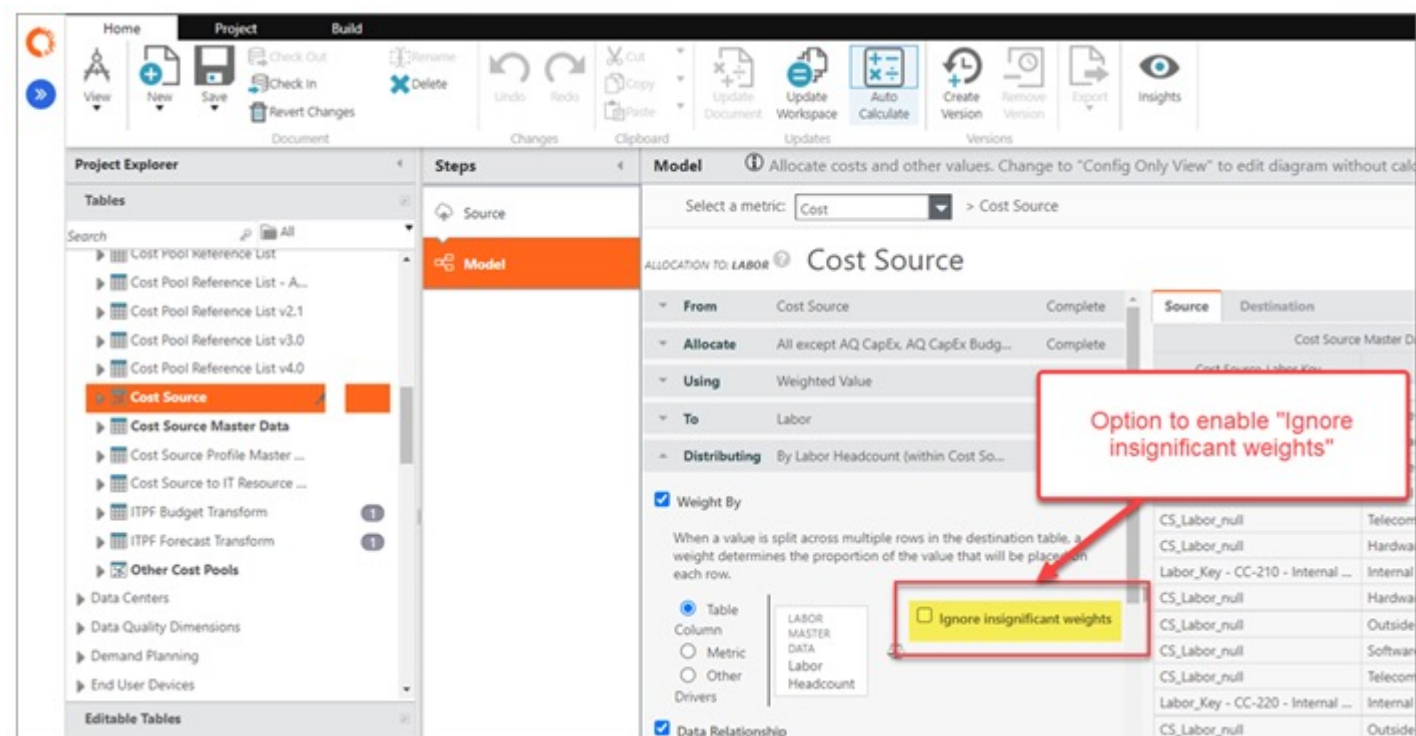
Apptio One

- Custom Calendars

- Customers can now configure their own customer calendar by uploading a spreadsheet with the specific starting period and ending period. This is beneficial for those companies using non-Gregorian calendars that want to align with the National Retail Federations calendars (e.g. control which year has the 13th period).
- Released 1.11.0 April 29, 2022

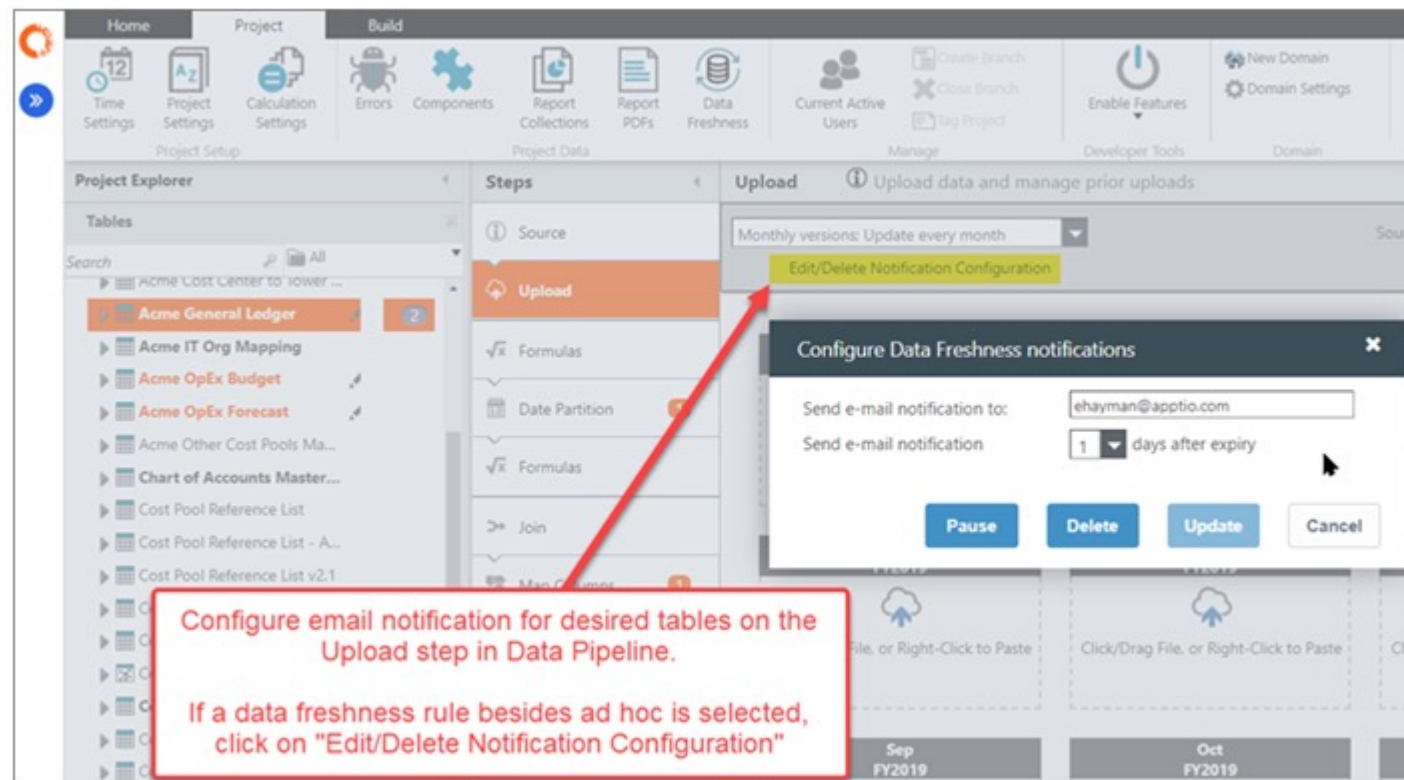
Apptio One

- Ignore Insignificant Weights
 - Allows you to improve performance of environment
 - Ratio is largest weighting is a million times larger than the smaller weightings
 - Released 12.9.12 Nov 05, 2021



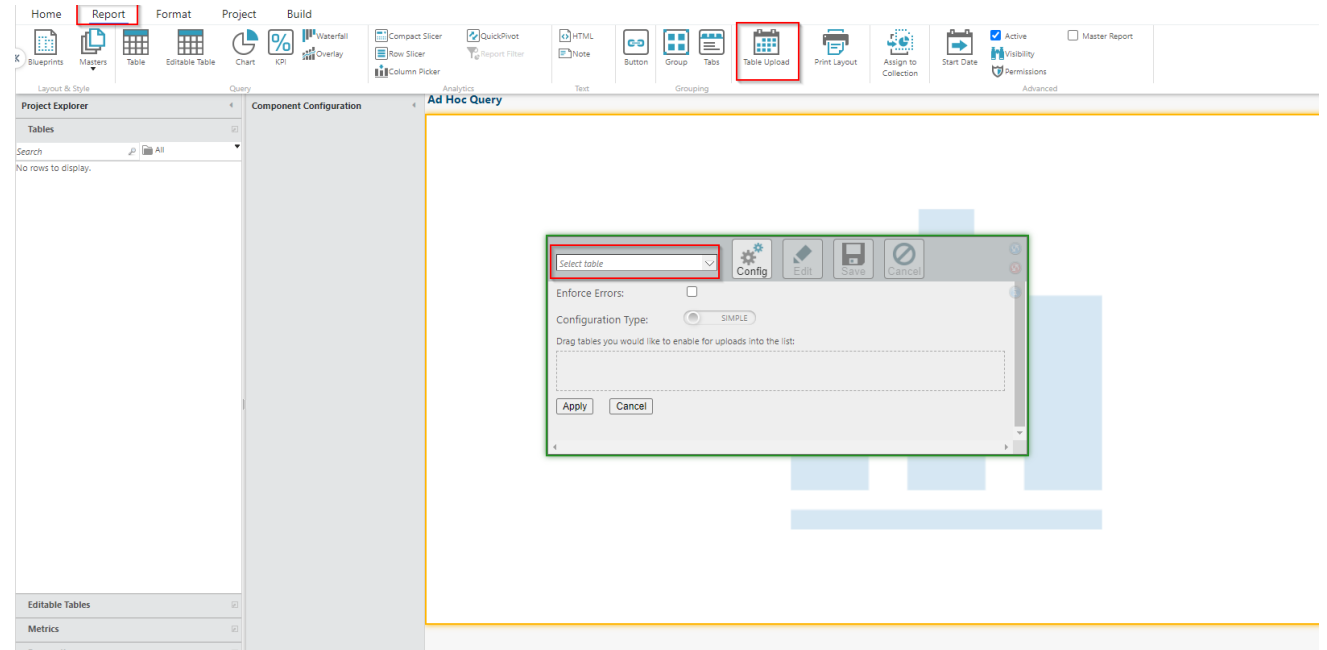
Apptio One

- Table Upload Late Email Notification
 - TBMA's can assign a data owner responsible for data uploads to be notified if the table upload is late based upon the designate refresh frequency. TBMA's can also create new "data freshness" rules to meet specific data update requirements (e.g. create a semi-annual update).
 - Released 1.7.0 Nov 05, 2021



Apptio One

- End Users able to Upload Data
 - You can make a report with end users having the ability to upload data.
 - Can help limit the strain on your TBM office.
 - Empowers your stakeholders to make changes faster.



Where to find Apptio Updates?

- Has anyone used any of these new features?
- Has anyone used these for a unique used case?
- Has anyone not used these new features for a reason?

Part 5: Editable Tables



Editable Tables

Copy and Paste Multiple Rows

- Improve the efficiency of creating and formatting Editable Table Report Components by enabling the selection of multiple columns to format together at the same time. Format options include freeze columns, resize and background color formatting.

Table Match Works

- Editable tables did not used to always be sorted. New functionality allows for the formula allows for sorting.

Delete Table uploads

- Admins can now delete tables that where uploaded into editable tables.

Editable Tables

- Select Multiple Columns
 - Improve the efficiency of creating and formatting Editable Table Report Components by enabling the selection of multiple columns to format together at the same time. Format options include freeze columns, resize and background color formatting.

APPTIO

Instructions Agency 1 Agency 2 Agency 3 Org 4 Org 5 Org 6 Org 7 Org 8 Org 9 Org 10 +

Enter volume estimates for the upcoming periods

Business Unit ID	Service ID	Business Unit	Department	Service Offering	Unit of Measure	Current Yr	Yr	Mar Cy	Apr Cy	May Cy
BU_ID_1	BAS-01	Product Development	Widgets	Product planning & development	User Accounts			300	300	300
BU_ID_1	BAS-03	Product Development	Widgets	Customer analytics	User Accounts				280	2
BU_ID_1	BAS-06	Product Development	Widgets	Resource planning & procurement	User Accounts				280	2
BU_ID_1	BAS-10	Product Development	Widgets	Produce products & services	User Accounts				280	2
BU_ID_1	EUS-01	Product Development	Widgets	Fixed Workspace	Device	\$150.00	50		50	
BU_ID_1	EUS-02	Product Development				\$200.00	42	42	42	
BU_ID_1	EUS-04	Product Development				\$500.00	300	300	300	3
BU_ID_1	EUS-06	Product Development				\$500.00	10	11	12	13
BU_ID_1	EUS-07	Product Development				\$0.15	2,500	2,500	2,500	2,5
BU_ID_1	EUS-10.1	Product Development				\$0.08	41,810	41,810	41,810	41,8
BU_ID_1	EUS-11.2	Product Development				\$75.00	50	50	50	50
BU_ID_1	TS-07	Product Development				\$225.00	1,900	1,900	1,900	1,9
BU_ID_1	TS-08	Product Development	Widgets	IT Training	Hr	\$150.00	5,000	5,000	5,000	2,000

Format options: Sort A-Z, Sort Z-A, Group Columns, Open in /data (CTRL+ALT+I), Freeze Columns, Set Background Color..., Set Width...

Editable Table report component now supports multiple column selection (e.g. freeze columns, set background color, or set width)

Editable Tables

- Control Publish
 - End users with authorized permissions, can publish and check in Editable Table changes when they complete their updates. This allows those changes to be available in the transform table and corresponding analytics within the same day. This should be used in select use cases where the updated data does not initiate a large model calculation.
 - Released 1.7 Nov 05, 2021

Reports by Ed

Physical Server Costs Product Catalog Administration **Product Catalog**

Product Catalog Maintenance
Add or change new product offerings, categorization and life cycle

Product ID	Product	Product Description	Life Cycle	Product Family ID	Product Family	Product Group ID	Product Group
PID-028	Computer		Active	PFID-002	Workplace	PGID-006	Client Computing
PID-029	Mobile		Active	PFID-002	Workplace	PGID-006	Client Computing
PID-030	Virtual Client		Active	PFID-002	Workplace	PGID-006	Client Computing
PID-031	Collaboration		Active	PFID-002	Workplace	PGID-007	Communication & Collaboration
PID-032	Communication		Active	PFID-002	Workplace	PGID-007	Communication & Collaboration
PID-033	Print		Active	PFID-002	Workplace	PGID-007	Communication & Collaboration
PID-034	Productivity		Active	PFID-002	Workplace	PGID-007	Communication & Collaboration
PID-035	Network Access		Active	PFID-002	Workplace	PGID-008	Connectivity
PID-036	Remote Access		Active	PFID-002	Workplace	PGID-008	Connectivity
PID-037	Compute on Demand		Active	PFID-003	Tech Services	PGID-009	Compute
PID-038	Mainframe		Active	PFID-003	Tech Services	PGID-009	Compute
PID-039	Physical Compute		Active	PFID-003	Tech Services	PGID-009	Compute
PID-040	Virtual Compute & Containers		Active	PFID-003	Tech Services	PGID-009	Compute
PID-041	Enterprise Data Center		Active	PFID-003	Tech Services	PGID-011	Data Center
PID-042	Other Data Center		Active	PFID-003	Tech Services	PGID-011	Data Center
PID-043	Data Network		Active	PFID-003	Tech Services	PGID-011	Network
PID-044	Domain Services		Active	PFID-003	Tech Services	PGID-011	Network
PID-045	Internet Connectivity		Active	PFID-003	Tech Services	PGID-011	Network
PID-046	Load Balancing		Active	PFID-003	Tech Services	PGID-011	Network
PID-047	Virtual Private Network		Active	PFID-003	Tech Services	PGID-011	Network
PID-048	Voice Network		Active	PFID-003	Tech Services	PGID-011	Network
PID-049	Backup & Archive		Active	PFID-003	Tech Services	PGID-011	Network

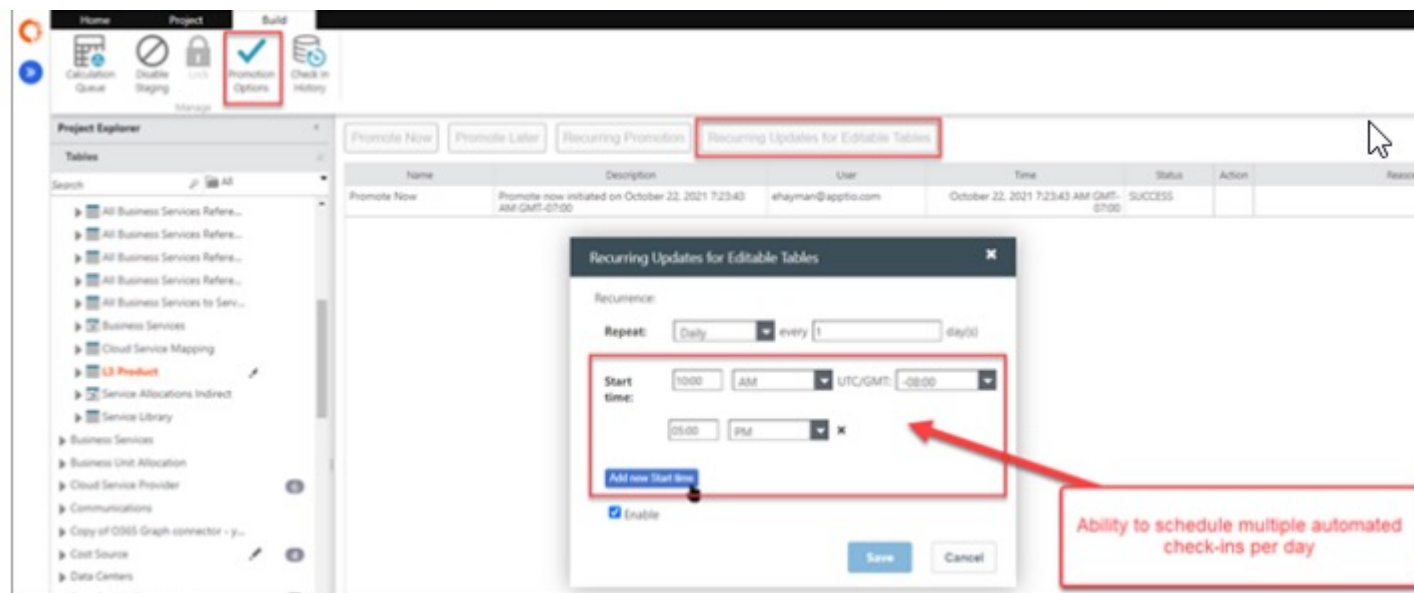
Enter changes, select Save, then Publish

Page 1 of 2 displaying 1 - 23 of 28

Add Row Publish Save Cancel

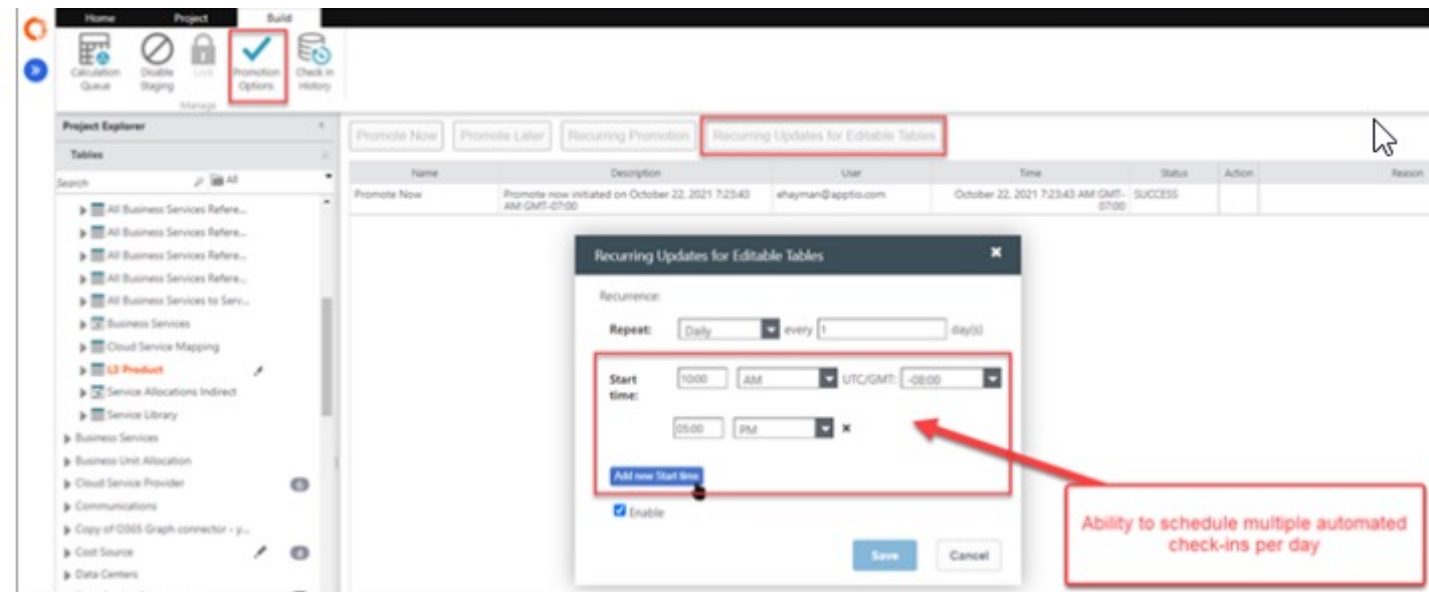
Editable Tables

- Multiple Updates to Editable Tables
 - The Recurring Updates for Editable Tables feature can now be configured for multiple updates in one day. This allows change made via editable tables to be available in the transform table and corresponding analytics within the same day without manual uploads. This should be used in select use cases where the updated data does not initiate a large model calculation.
 - Released 1.7 Nov 05, 2021



Editable Tables

- Multiple Updates to Editable Tables
 - The Recurring Updates for Editable Tables feature can now be configured for multiple updates in one day. This allows change made via editable tables to be available in the transform table and corresponding analytics within the same day without manual uploads. This should be used in select use cases where the updated data does not initiate a large model calculation.
 - Released 1.7 Nov 05, 2021



Where to find Apptio Updates?

- Has anyone used any of these new features?
- Has anyone used these for a unique used case?
- Has anyone not used these new features for a reason?

Part 6: Questions and Answers



Discussion

- Are there any features you are struggling to utilize?
- Are there any features you tried to use, but that don't seem to work as intended?
- Do you have a “wish list” of new features you would like to see?



Questions?



Thank You For Attending regoUniversity

Instructions for PMI credits

- Access your account at pmi.org
- Click on **Certifications**
- Click on **Maintain My Certification**
- Click on **Visit CCR's** button under the **Report PDU's**
- Click on **Report PDU's**
- Click on **Course or Training**
- Class Provider = **Rego Consulting**
- Class Name = **regoUniversity**
- Course **Description**
- Date Started = **Today's Date**
- Date Completed = **Today's Date**
- Hours Completed = **1 PDU per hour of class time**
- Training classes = **Technical**
- Click on **I agree** and **Submit**



Let us know how we can improve!
Don't forget to fill out the class survey.



Phone

888.813.0444



Email

info@regoconsulting.com



Website

www.regouniversity.com